

HECM Lenders (FHA Approved Only)

Industry Overview

HECMs Endorsed through September 2018

Next Release Date: Week 1 of November

Endorsement Growth Change

-9.9 %

Competition Growth

8.9 %

Active Lender Change

14

Figures above reflect change from prior month

PERFORMANCE

Rank/Region	10/17	11/17	12/17	01/18	02/18	03/18	04/18	05/18	06/18	07/18	08/18	09/18	Trend
1 Pacific/Hawaii	1,322	1,322	1,311	2,047	1,657	1,204	964	911	759	824	866	793	▼
2 Southeast/Caribbean	731	857	879	1,096	861	763	616	702	547	584	600	585	▼
3 Southwest	484	547	526	576	475	477	335	385	315	309	353	279	▼
4 Rocky Mountain	448	529	447	570	473	365	283	284	234	244	288	253	▼
5 Northwest/Alaska	352	334	328	613	442	328	264	233	200	237	262	227	▼
6 Midwest	322	348	351	405	387	322	249	254	238	222	242	207	▼
7 Mid-Atlantic	367	325	343	378	320	306	240	230	215	174	223	192	▼
8 New York/New Jersey	247	248	299	309	322	276	229	204	168	154	181	193	▲
9 New England	139	171	167	215	163	157	87	98	102	98	109	94	▼
10 Great Plains	85	101	114	104	101	102	78	58	60	62	73	57	▼
Total	4,497	4,782	4,765	6,313	5,201	4,300	3,345	3,359	2,838	2,908	3,197	2,880	▼

Find out where the top five markets are in your area by state, county or even zip code to help improve sales performance, market share and maximize opportunities.

Call us for a free briefing at (682) 651-5632.



REVERSE MARKET
INSIGHT

(682) 651-5632

info@rminsight.net

www.rminsight.net

Interested in industry commentary, data and analysis? [CLICK HERE](#)

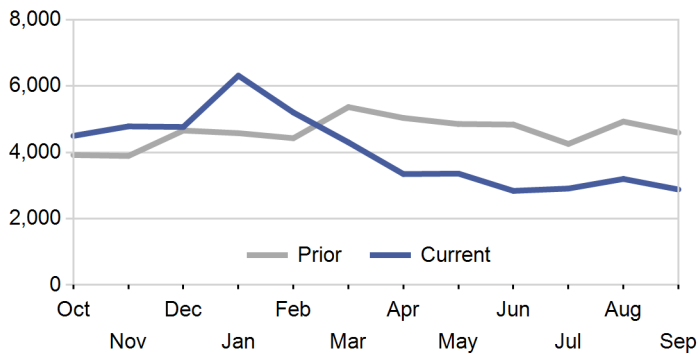
Subscribe to our [FREE ReverseIQ Newsletter](#) and [FREE Industry Reports](#)

Competition

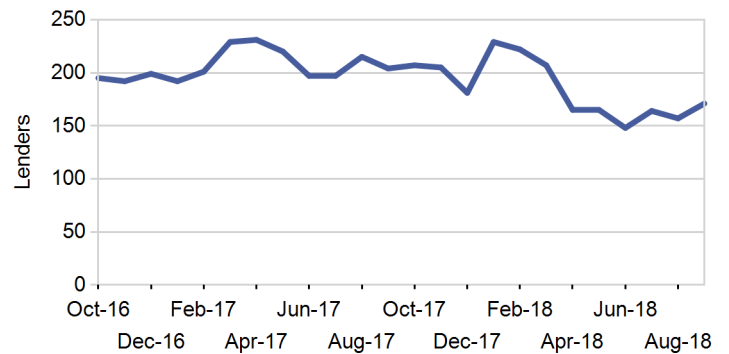
Top 10 Lenders

Rank / Lender	10/17	11/17	12/17	01/18	02/18	03/18	04/18	05/18	06/18	07/18	08/18	09/18	Total	Trend
1 AMERICAN ADVISORS GROUP	983	1,132	1,141	1,218	1,183	1,158	890	1,006	874	797	839	778	11,999	▼
2 FINANCE OF AMERICA REVERSE LLC	509	425	435	636	559	390	314	302	275	262	324	256	4,687	▼
3 REVERSE MORTGAGE FUNDING LLC	358	399	457	591	310	285	241	255	191	227	203	178	3,695	▼
4 ONE REVERSE MORTGAGE LLC	251	277	265	296	253	261	271	216	214	225	275	198	3,002	▼
5 LIBERTY HOME EQUITY SOLUTIONS INC	266	230	192	576	498	353	156	114	71	131	124	202	2,913	▲
6 SYNERGY ONE LENDING INC	285	350	340	357	201	168	159	177	167	143	163	150	2,660	▼
7 LIVE WELL FINANCIAL INC	179	197	183	200	124	167	114	144	130	131	170	134	1,873	▼
8 HIGHTECHLENDING INC	108	112	79	104	190	128	81	67	58	64	51	55	1,097	▲
9 FAIRWAY INDEPENDENT MORTGAGE CORPORATION	95	56	57	154	99	70	95	60	50	72	72	68	948	▼
10 LONGBRIDGE FINANCIAL LLC	23	83	106	175	105	65	59	64	49	45	54	58	886	▲
Top 10 SubTotal	3,057	3,261	3,255	4,307	3,522	3,045	2,380	2,405	2,079	2,097	2,275	2,077	33,760	▼
Industry Total	4,497	4,782	4,765	6,313	5,201	4,300	3,345	3,359	2,838	2,908	3,197	2,880	48,385	▼

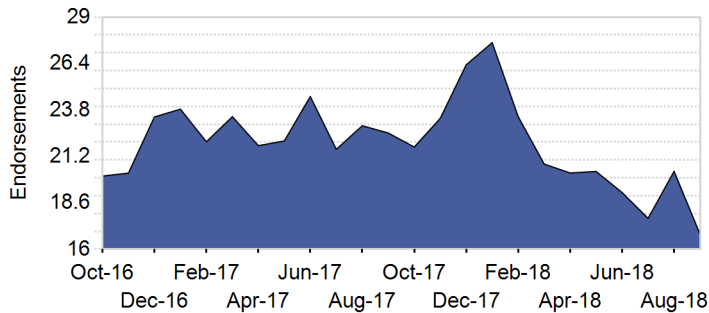
Endorsement Volume



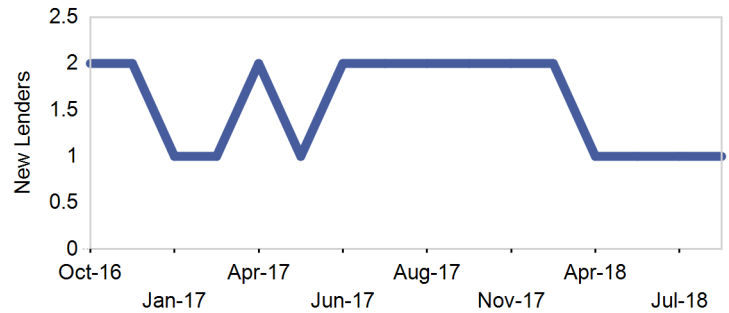
Active Lenders



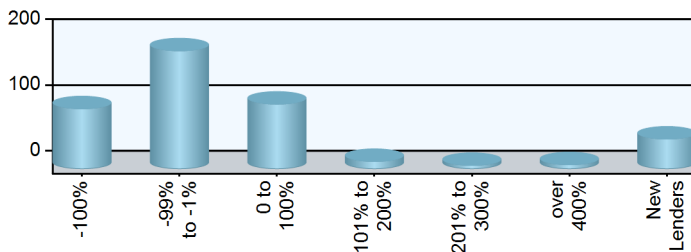
Endorsements per Lender



New Lenders by Month

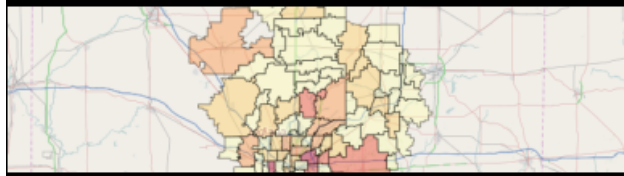


Lender Distribution by YTD Growth Rate



Paid Advertisement

Find Opportunity Faster



RMI Dashboard

Market Performance

Market	YTD Volume 2018	YTD Volume 2017	Chg %	Active Lenders 2018	Active Lenders 2017	Chg %	Volume / Lender 2018	Volume / Lender 2017	Chg %
Great Plains									
KANSAS CITY	220	276	-20.3 %	26	29	-10.3 %	2.6	2.6	-0.3 %
ST. LOUIS	177	184	-3.8 %	21	23	-8.7 %	2.5	2.2	15.6 %
DES MOINES	113	181	-37.6 %	15	19	-21.1 %	2.2	2.5	-11.5 %
TOPEKA	96	117	-17.9 %	18	20	-10.0 %	2.3	1.8	27.2 %
OMAHA	89	114	-21.9 %	13	16	-18.8 %	2.0	2.0	2.7 %
Region Total	695	872	-20.3 %	45	47	-4.3 %	4.1	4.4	-8.6 %
Mid-Atlantic									
PHILADELPHIA	655	773	-15.3 %	53	64	-17.2 %	3.5	3.6	-3.1 %
RICHMOND	543	707	-23.2 %	43	50	-14.0 %	3.1	3.6	-13.1 %
WASH. D.C.	341	604	-43.5 %	36	56	-35.7 %	2.5	3.4	-28.0 %
BALTIMORE	337	465	-27.5 %	39	47	-17.0 %	2.7	3.0	-9.4 %
PITTSBURGH	215	287	-25.1 %	26	32	-18.8 %	2.7	2.9	-8.0 %
WILMINGTON	99	164	-39.6 %	17	22	-22.7 %	2.1	2.1	-1.1 %
CHARLESTON	88	134	-34.3 %	17	16	6.3 %	2.4	2.5	-3.8 %
Region Total	2,278	3,134	-27.3 %	95	105	-9.5 %	6.2	7.2	-13.0 %
Midwest									
CHICAGO	496	614	-19.2 %	45	50	-10.0 %	3.2	3.3	-2.4 %
INDIANAPOLIS	322	428	-24.8 %	20	29	-31.0 %	3.5	3.3	5.8 %
MINN. ST. PAUL	307	350	-12.3 %	28	33	-15.2 %	2.7	2.6	5.1 %
DETROIT	257	279	-7.9 %	23	30	-23.3 %	3.1	2.8	11.0 %
MILWAUKEE	251	298	-15.8 %	32	32	0.0 %	2.6	3.3	-21.5 %
CLEVELAND	234	309	-24.3 %	30	28	7.1 %	2.5	3.1	-20.2 %
COLUMBUS	211	282	-25.2 %	20	26	-23.1 %	3.5	3.3	7.2 %
GRAND RAPIDS	199	238	-16.4 %	20	25	-20.0 %	2.9	2.6	12.8 %
SPRINGFIELD	109	136	-19.9 %	13	23	-43.5 %	2.6	2.6	-1.8 %
CINCINNATI	89	118	-24.6 %	19	21	-9.5 %	1.8	2.2	-16.9 %
FLINT	51	75	-32.0 %	9	19	-52.6 %	1.8	1.7	3.9 %
Region Total	2,526	3,127	-19.2 %	87	95	-8.4 %	8.0	7.9	1.3 %
New England									
BOSTON	522	634	-17.7 %	31	31	0.0 %	4.1	5.0	-18.6 %
HARTFORD	268	323	-17.0 %	29	40	-27.5 %	2.5	2.4	6.4 %
BANGOR	126	147	-14.3 %	17	20	-15.0 %	1.9	2.3	-15.9 %
PROVIDENCE	84	84	0.0 %	18	16	12.5 %	1.8	1.7	7.5 %
MANCHESTER	82	132	-37.9 %	16	23	-30.4 %	1.4	1.9	-26.1 %
BURLINGTON	41	69	-40.6 %	9	16	-43.8 %	1.3	1.5	-14.2 %
Region Total	1,123	1,389	-19.2 %	53	58	-8.6 %	5.2	5.6	-7.1 %
New York/New Jersey									
NEW YORK	979	1,350	-27.5 %	44	61	-27.9 %	4.5	4.8	-7.9 %
NEWARK	400	540	-25.9 %	47	60	-21.7 %	2.5	2.6	-5.8 %
CAMDEN	317	385	-17.7 %	54	61	-11.5 %	2.3	2.3	-1.4 %
ALBANY	205	261	-21.5 %	24	33	-27.3 %	2.8	2.2	23.8 %
BUFFALO	135	156	-13.5 %	12	16	-25.0 %	3.3	3.1	6.3 %
Region Total	2,036	2,692	-24.4 %	81	102	-20.6 %	5.7	6.0	-4.5 %
Northwest/Alaska									
SEATTLE	1,381	1,308	5.6 %	56	68	-17.6 %	5.3	4.6	14.4 %
PORTLAND	892	1,072	-16.8 %	53	61	-13.1 %	3.7	3.9	-4.1 %
BOISE	338	339	-0.3 %	36	41	-12.2 %	2.4	2.1	14.2 %
SPOKANE	151	135	11.9 %	31	28	10.7 %	1.9	1.6	21.3 %
ANCHORAGE	44	29	51.7 %	9	7	28.6 %	1.8	1.6	15.3 %
Region Total	2,806	2,883	-2.7 %	80	91	-12.1 %	7.0	6.8	3.4 %
Pacific/Hawaii									
LOS ANGELES	2,199	2,974	-26.1 %	85	98	-13.3 %	6.5	7.2	-10.0 %

Market	YTD Volume 2018	YTD Volume 2017	Chg %	Active Lenders 2018	Active Lenders 2017	Chg %	Volume / Lender 2018	Volume / Lender 2017	Chg %
SANTA ANA	1,792	2,362	-24.1 %	89	98	-9.2 %	5.3	6.4	-17.5 %
SAN FRANCISCO	1,580	2,083	-24.1 %	63	73	-13.7 %	5.9	6.8	-13.2 %
PHOENIX	1,160	1,447	-19.8 %	67	70	-4.3 %	4.4	4.7	-5.2 %
SACRAMENTO	1,064	1,170	-9.1 %	58	62	-6.5 %	4.7	4.6	2.7 %
SAN DIEGO	875	1,111	-21.2 %	57	70	-18.6 %	4.0	4.5	-9.5 %
LAS VEGAS	426	492	-13.4 %	43	37	16.2 %	2.8	3.4	-16.6 %
FRESNO	385	503	-23.5 %	43	54	-20.4 %	2.7	2.8	-4.4 %
RENO	213	256	-16.8 %	26	33	-21.2 %	2.2	2.2	-1.0 %
TUCSON	191	188	1.6 %	26	29	-10.3 %	2.0	2.0	-0.9 %
HONOLULU	140	144	-2.8 %	15	27	-44.4 %	2.0	1.7	14.9 %
Region Total	10,025	12,730	-21.2 %	161	167	-3.6 %	14.0	16.4	-14.7 %
Rocky Mountain									
DENVER	1,905	2,402	-20.7 %	76	71	7.0 %	5.7	6.5	-13.1 %
SALT LAKE CITY	785	843	-6.9 %	44	48	-8.3 %	3.8	4.3	-11.9 %
HELENA	150	179	-16.2 %	16	24	-33.3 %	2.4	2.5	-4.2 %
CASPER	78	92	-15.2 %	15	19	-21.1 %	2.0	1.8	7.3 %
SIOUX FALLS	46	42	9.5 %	12	7	71.4 %	1.7	1.7	4.3 %
FARGO	30	40	-25.0 %	11	8	37.5 %	1.3	1.7	-23.3 %
Region Total	2,994	3,598	-16.8 %	98	98	0.0 %	6.8	7.5	-9.5 %
Southeast/Caribbean									
MIAMI	1,171	1,411	-17.0 %	67	83	-19.3 %	4.3	4.4	-2.6 %
GREENSBORO	852	1,004	-15.1 %	45	53	-15.1 %	4.2	4.5	-6.6 %
TAMPA	755	922	-18.1 %	56	70	-20.0 %	3.6	4.0	-9.6 %
ORLANDO	687	845	-18.7 %	49	57	-14.0 %	3.6	3.8	-4.2 %
ATLANTA	646	838	-22.9 %	39	59	-33.9 %	4.2	3.8	10.0 %
COLUMBIA	505	623	-18.9 %	43	47	-8.5 %	2.9	3.0	-5.3 %
JACKSONVILLE	426	533	-20.1 %	50	49	2.0 %	3.0	3.1	-1.0 %
BIRMINGHAM	350	471	-25.7 %	27	34	-20.6 %	3.3	3.6	-9.4 %
KNOXVILLE	266	307	-13.4 %	22	29	-24.1 %	2.9	3.0	-2.2 %
NASHVILLE	263	271	-3.0 %	24	28	-14.3 %	2.7	2.5	11.3 %
LOUISVILLE	177	226	-21.7 %	19	19	0.0 %	3.2	3.3	-1.0 %
JACKSON	141	201	-29.9 %	18	18	0.0 %	2.3	2.7	-14.1 %
MEMPHIS	68	89	-23.6 %	11	14	-21.4 %	1.8	1.8	-3.1 %
CARIBBEAN	47	155	-69.7 %	9	10	-10.0 %	1.9	4.0	-51.6 %
Region Total	6,354	7,896	-19.5 %	124	145	-14.5 %	11.3	11.8	-4.2 %
Southwest									
DALLAS	637	785	-18.9 %	52	55	-5.5 %	3.3	3.6	-9.2 %
HOUSTON	581	788	-26.3 %	42	51	-17.6 %	3.6	4.0	-9.6 %
SAN ANTONIO	575	764	-24.7 %	53	52	1.9 %	2.9	3.5	-16.8 %
FT. WORTH	538	710	-24.2 %	43	56	-23.2 %	3.0	3.0	-1.4 %
NEW ORLEANS	310	399	-22.3 %	28	30	-6.7 %	2.9	3.2	-11.3 %
ALBUQUERQUE	223	259	-13.9 %	27	25	8.0 %	2.6	2.6	-1.5 %
LITTLE ROCK	187	231	-19.0 %	22	25	-12.0 %	2.4	2.6	-9.0 %
OKLAHOMA CITY	129	188	-31.4 %	12	22	-45.5 %	3.3	2.8	16.5 %
LUBBOCK	126	171	-26.3 %	27	26	3.8 %	1.9	2.0	-6.9 %
TULSA	122	161	-24.2 %	17	22	-22.7 %	2.1	2.0	3.1 %
SHREVEPORT	76	91	-16.5 %	17	18	-5.6 %	1.9	1.9	0.5 %
Region Total	3,504	4,547	-22.9 %	95	98	-3.1 %	8.4	9.5	-11.8 %
Grand Total	34,341	42,868	-19.9 %	344	390	-11.8 %	20.7	22.7	-8.9 %

Analyze your top competitors and leverage the competitive strategies that work for them. Call us for a free, no obligation, Competitive Landscape Report at (682) 651-5632.

Top 100 Lenders - Year to Date

Rank	Lender	Vol 2018	Vol 2017	Chg %	Mkt Share 2018	Mkt Share 2017	Chg %	Top State
1	AMERICAN ADVISORS GROUP	8743	9522	-8 %	25.5 %	22.2 %	15 %	CA
2	FINANCE OF AMERICA REVER	3318	4037	-18 %	9.7 %	9.4 %	3 %	CA
3	REVERSE MORTGAGE FUNDING	2481	3402	-27 %	7.2 %	7.9 %	-9 %	CA
4	LIBERTY HOME EQUITY SOLU	2225	2816	-21 %	6.5 %	6.6 %	-1 %	CA
5	ONE REVERSE MORTGAGE LLC	2209	2287	-3 %	6.4 %	5.3 %	21 %	CA
6	SYNERGY ONE LENDING INC	1685	2376	-29 %	4.9 %	5.5 %	-11 %	CA
7	LIVE WELL FINANCIAL INC	1314	1367	-4 %	3.8 %	3.2 %	20 %	CA
8	HIGHTECHLENDING INC	798	1078	-26 %	2.3 %	2.5 %	-8 %	CA
9	FAIRWAY INDEPENDENT MORT	740	574	29 %	2.2 %	1.3 %	61 %	CO
10	OPEN MORTGAGE LLC	687	511	34 %	2.0 %	1.2 %	68 %	CA
11	LONGBRIDGE FINANCIAL LLC	674	328	105 %	2.0 %	0.8 %	157 %	CA
12	FIRSTBANK	516	668	-23 %	1.5 %	1.6 %	-4 %	TN
13	REVERSE MORTGAGESCOM INC	514	781	-34 %	1.5 %	1.8 %	-18 %	TX
14	NATIONWIDE EQUITIES CORP	436	1002	-56 %	1.3 %	2.3 %	-46 %	CA
15	ALL REVERSE MORTGAGE INC	427	333	28 %	1.2 %	0.8 %	60 %	CA
16	CHERRY CREEK MORTGAGE CO	389	332	17 %	1.1 %	0.8 %	46 %	UT
17	QUONTIC BANK FSB	318	346	-8 %	0.9 %	0.8 %	15 %	NY
18	ADVISORS MORTGAGE GROUP	295	524	-44 %	0.9 %	1.2 %	-30 %	CA
19	RESOLUTE BANK	261	395	-34 %	0.8 %	0.9 %	-18 %	CA
20	PLAZA HOME MORTGAGE INC	229	358	-36 %	0.7 %	0.8 %	-20 %	CA
21	AMERICAN PACIFIC MORTGAG	228	228	0 %	0.7 %	0.5 %	25 %	CA
22	1ST NATIONS REVERSE MORT	211	129	64 %	0.6 %	0.3 %	104 %	TX
23	THE FEDERAL SAVINGS BANK	198	333	-41 %	0.6 %	0.8 %	-26 %	NV
24	MCM HOLDINGS INC	194	223	-13 %	0.6 %	0.5 %	9 %	FL
25	MONEY HOUSE INC	190	180	6 %	0.6 %	0.4 %	32 %	CA
26	M & T BANK	184	243	-24 %	0.5 %	0.6 %	-5 %	NY
27	BROKER SOLUTIONS INC	135	170	-21 %	0.4 %	0.4 %	-1 %	CA
28	LAND-HOME FINANCIAL SERV	130	114	14 %	0.4 %	0.3 %	42 %	CA
29	SUN WEST MORTGAGE CO INC	127	235	-46 %	0.4 %	0.5 %	-33 %	CA
30	HOMEBRIDGE FINANCIAL SER	126	110	15 %	0.4 %	0.3 %	43 %	CA
31	SUN AMERICAN MORTGAGE CO	124	145	-14 %	0.4 %	0.3 %	7 %	AZ
32	INTERCONTINENTAL CAPITAL	118	154	-23 %	0.3 %	0.4 %	-4 %	NY
33	TOWNEBANK	115	116	-1 %	0.3 %	0.3 %	24 %	VA
34	AMERICAN FINANCIAL NETWO	83	112	-26 %	0.2 %	0.3 %	-7 %	CA
35	TOTAL MEDIA MANAGEMENT L	81	117	-31 %	0.2 %	0.3 %	-14 %	AL
36	VIP MORTGAGE INC	79	101	-22 %	0.2 %	0.2 %	-2 %	AZ
37	FRANKLIN FIRST FINANCIAL	78	102	-24 %	0.2 %	0.2 %	-5 %	MA
38	COMMUNITY FIRST NATIONAL	76	146	-48 %	0.2 %	0.3 %	-35 %	FL
39	MORTGAGE BROKERS SERVICE	72	83	-13 %	0.2 %	0.2 %	8 %	WA
40	PACIFIC RESIDENTIAL MORT	71	84	-15 %	0.2 %	0.2 %	6 %	OR
41	UNIVERSAL LENDING CORP	68	118	-42 %	0.2 %	0.3 %	-28 %	CO
42	NOVA FINANCIAL & INVESTM	63	85	-26 %	0.2 %	0.2 %	-7 %	AZ
43	ACADEMY MORTGAGE CORPORA	63	25	152 %	0.2 %	0.1 %	215 %	OR
44	UNITED NORTHERN MORTGAGE	62	236	-74 %	0.2 %	0.6 %	-67 %	NY
45	MOVEMENT MORTGAGE LLC	62	60	3 %	0.2 %	0.1 %	29 %	CA
46	EVOLVE BANK & TRUST	57	164	-65 %	0.2 %	0.4 %	-57 %	FL
47	ALPHA MORTGAGE CORPORATI	57	59	-3 %	0.2 %	0.1 %	21 %	NC
48	CALIBER HOME LOANS INC	57	56	2 %	0.2 %	0.1 %	27 %	WA
49	GOLDWATER BANK NA	56	81	-31 %	0.2 %	0.2 %	-14 %	CO
50	AMERICA FIRST FEDERAL CR	52	32	63 %	0.2 %	0.1 %	103 %	UT

Rank	Lender	Vol 2018	Vol 2017	Chg %	Mkt Share 2018	Mkt Share 2017	Chg %	Top State
51	SUCCESS MORTGAGE PARTNER	47	53	-11 %	0.1 %	0.1 %	11 %	MI
52	PARAMOUNT RESIDENTIAL MO	47	9	422 %	0.1 %	0.0 %	552 %	CA
53	PEOPLES HOME EQUITY INC	46	28	64 %	0.1 %	0.1 %	105 %	TN
54	ON Q FINANCIAL INC	45	43	5 %	0.1 %	0.1 %	31 %	AZ
55	PRIMARY RESIDENTIAL MORT	44	69	-36 %	0.1 %	0.2 %	-20 %	CA
56	US MORTGAGE CORPORATION	40	34	18 %	0.1 %	0.1 %	47 %	NY
57	JET DIRECT FUNDING CORP	40	51	-22 %	0.1 %	0.1 %	-2 %	NY
58	CARROLLTON MORTGAGE CO	40	27	48 %	0.1 %	0.1 %	85 %	CA
59	LENOX FINANCIAL MORTGAGE	40	48	-17 %	0.1 %	0.1 %	4 %	CA
60	GULF COAST BANK AND TRUS	39	14	179 %	0.1 %	0.0 %	248 %	LA
61	MORTGAGESHOP LLC	39	55	-29 %	0.1 %	0.1 %	-11 %	VA
62	LOANDEPOTCOM	38	32	19 %	0.1 %	0.1 %	48 %	OR
63	UNITED MORTGAGE CORP	38	77	-51 %	0.1 %	0.2 %	-38 %	NY
64	CROSSCOUNTRY MORTGAGE	37	18	106 %	0.1 %	0.0 %	157 %	FL
65	AMERICAS MORTGAGE RESOUR	37	67	-45 %	0.1 %	0.2 %	-31 %	LA
66	SKYLINE FINANCIAL CORPOR	35	46	-24 %	0.1 %	0.1 %	-5 %	CA
67	GERSHMAN INVESTMENT CORP	34	28	21 %	0.1 %	0.1 %	52 %	MO
68	BRIDGEVIEW BANK GROUP	34	17	100 %	0.1 %	0.0 %	150 %	CA
69	GEORGETOWN MORTGAGE	34	52	-35 %	0.1 %	0.1 %	-18 %	TX
70	ATLANTIC COAST MORTGAGE	33	4	725 %	0.1 %	0.0 %	930 %	VA
71	NORTHERN OHIO INVESTMENT	32	59	-46 %	0.1 %	0.1 %	-32 %	OH
72	EAST COAST CAPITAL CORP	32	43	-26 %	0.1 %	0.1 %	-7 %	NY
73	RESIDENTIAL HOME FUNDING	31	52	-40 %	0.1 %	0.1 %	-26 %	NY
74	MANN MORTGAGE LLC	31	53	-42 %	0.1 %	0.1 %	-27 %	MT
75	PREMIER MORTGAGE RESOURC	30	35	-14 %	0.1 %	0.1 %	7 %	ID
76	MOHAVE STATE BANK	30	45	-33 %	0.1 %	0.1 %	-17 %	AZ
77	BANK OF ENGLAND	30	169	-82 %	0.1 %	0.4 %	-78 %	FL
78	CITYWIDE HOME LOANS	29	29	0 %	0.1 %	0.1 %	25 %	UT
79	MAGNOLIA BANK INC	29	0		0.1 %	0.0 %		CA
80	SIERRA PACIFIC MORTGAGE	29	36	-19 %	0.1 %	0.1 %	1 %	CA
81	BANK OF UTAH	29	16	81 %	0.1 %	0.0 %	126 %	UT
82	HOMEOWNERS MORTGAGE ENTE	28	61	-54 %	0.1 %	0.1 %	-43 %	NC
83	GSF MORTGAGE CORPORATION	27	64	-58 %	0.1 %	0.1 %	-47 %	WA
84	FINANCE OF AMERICA MORTG	26	30	-13 %	0.1 %	0.1 %	8 %	NV
85	MEADOWBROOK FINANCIAL MO	26	47	-45 %	0.1 %	0.1 %	-31 %	NY
86	DOLLAR BANK FSB	26	52	-50 %	0.1 %	0.1 %	-38 %	PA
87	MOUNTAIN AMERICA CREDIT	25	50	-50 %	0.1 %	0.1 %	-38 %	UT
88	AMERICAN LIBERTY MORTGAG	25	37	-32 %	0.1 %	0.1 %	-16 %	CO
89	CMG MORTGAGE INC	25	18	39 %	0.1 %	0.0 %	73 %	CA
90	SIMONICH CORPORATION	23	32	-28 %	0.1 %	0.1 %	-10 %	CA
91	VAN DYK MORTGAGE CORPORA	23	35	-34 %	0.1 %	0.1 %	-18 %	KY
92	COLUMBUS CAPITAL LENDING	23	10	130 %	0.1 %	0.0 %	187 %	FL
93	FIRST NATIONAL BANK OF P	23	23	0 %	0.1 %	0.1 %	25 %	NC
94	GUILD MORTGAGE COMPANY	22	18	22 %	0.1 %	0.0 %	53 %	MT
95	CONTOUR MORTGAGE CORPORA	21	34	-38 %	0.1 %	0.1 %	-23 %	NY
96	WHOLESALE CAPITAL CORP	21	36	-42 %	0.1 %	0.1 %	-27 %	CA
97	SECURITYNATIONAL MORTGAG	20	21	-5 %	0.1 %	0.0 %	19 %	UT
98	NORWICH COMMERCIAL GROUP	20	25	-20 %	0.1 %	0.1 %	0 %	CT
99	SUMMIT FUNDING INC	20	9	122 %	0.1 %	0.0 %	177 %	CA
100	RESIDENTIAL WHOLESALE MO	20	1	1,900 %	0.1 %	0.0 %	2,397 %	CA

Paid Advertisement

TARGET YOUR MARKETING

RMI Dashboard

Paid Advertisement

1st REVERSE MORTGAGE USA
DIVISION OF CHERRY CREEK MORTGAGE CO., INC.

Your Reverse Mortgage Lending Partner. Putting the pieces together... Together.

Expand Your Business. Satisfy Your Clients.

Approved GNMA Issuer.
Cherry Creek Mortgage Co., Inc. NMLS #3001 dba 1st Reverse Mortgage USA®. All Rights Reserved. 3609 S. Wadsworth Blvd., Suite 500 Lakewood, CO 80235.

If you are looking for a new investor relationship and additional liquidity in the secondary markets for all reverse mortgage products, please contact 1st Reverse Mortgage USA® at (877) 217-0166 or www.1strmusa.com