

HECM Lenders (FHA Approved Only)

Industry Overview

HECMs Endorsed through October 2012

Next Release Date: Week 1 of December

Endorsement Growth Change

1.1 %

Competition Growth

-6.0 %

Active Lender Change

-16

Figures above reflect change from prior month

PERFORMANCE

Rank/Region	11/11	12/11	01/12	02/12	03/12	04/12	05/12	06/12	07/12	08/12	09/12	10/12	Trend
1 Southeast/Caribbean	948	1,021	1,155	1,043	851	1,000	949	1,025	856	946	785	908	▲
2 Pacific/Hawaii	601	619	773	832	703	842	686	835	631	651	569	585	▲
3 Southwest	731	632	721	732	593	556	573	685	593	604	559	567	▲
4 Mid-Atlantic	655	588	610	691	611	575	528	658	467	522	447	441	▼
5 New York/New Jersey	526	524	550	723	546	491	544	594	387	412	395	291	▼
6 Midwest	402	452	488	455	380	361	405	471	318	335	317	366	▲
7 New England	240	283	258	297	210	199	247	316	149	156	142	134	▼
8 Rocky Mountain	249	195	250	244	195	198	221	229	181	179	194	187	▼
9 Northwest/Alaska	167	188	213	261	186	258	187	252	191	210	206	167	▼
10 Great Plains	135	134	157	148	106	115	99	122	95	107	92	99	▲
Total	4,654	4,636	5,175	5,426	4,381	4,595	4,439	5,187	3,868	4,122	3,706	3,745	▲

Find out where the top five markets are in your area by state, county or even zip code to help improve sales performance, market share and maximize opportunities.

Call us for a free briefing at (682) 651-5632.

*Paid Advertisement

Strategically thinking companies rely on ReverseVision

Freedom of Action

ReverseVision is supported by more reverse mortgage lenders than any other software, giving customers maximum *freedom of action*.

Independence

As an independent technology company ReverseVision gives its customers the *flexibility* and *independence* to grow their business.



(682) 651-5632

info@rminsight.net

www.rminsight.net

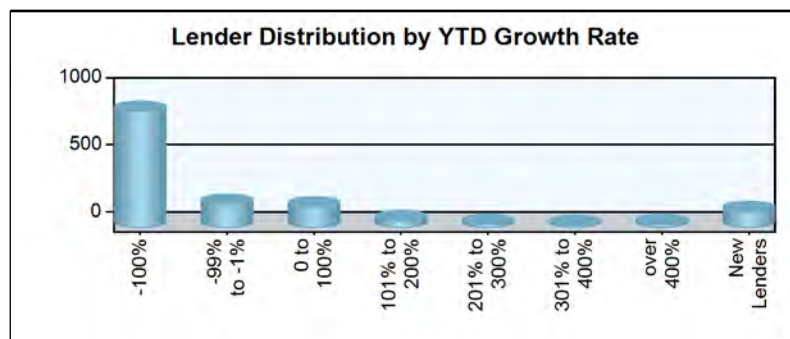
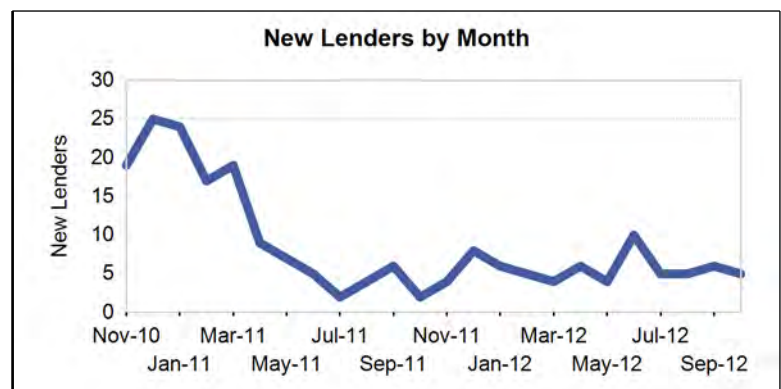
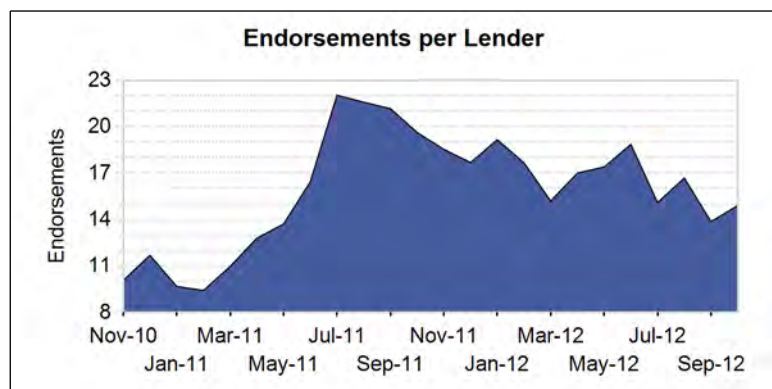
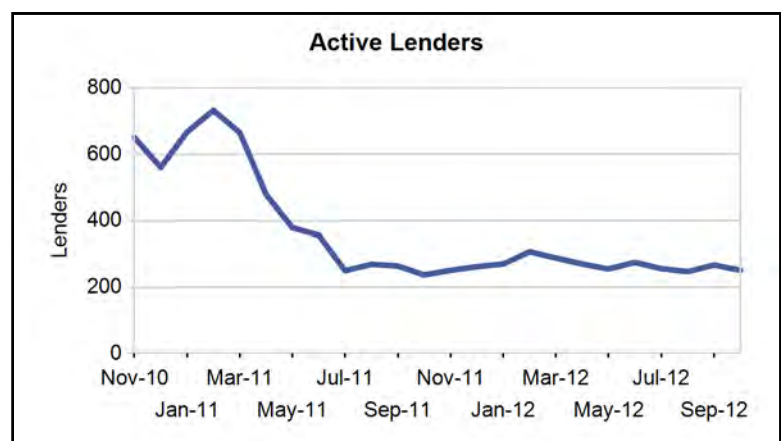
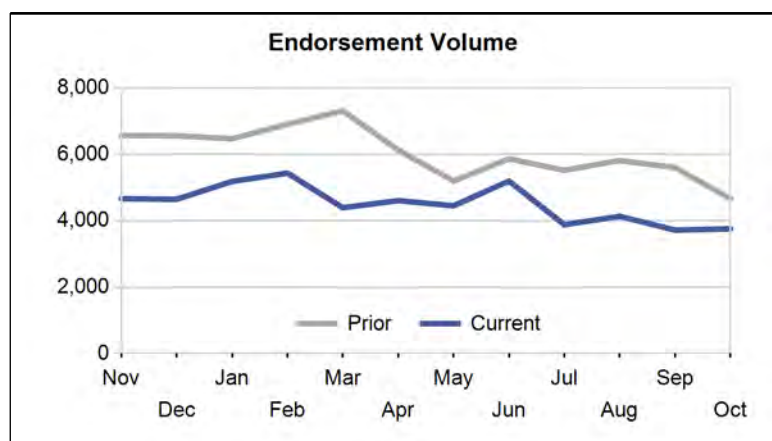
Interested in industry commentary, data and analysis? [CLICK HERE](#)

Subscribe to our [FREE ReverseIQ Newsletter](#) and [FREE Industry Reports](#)

Competition

Top 10 Lenders

Rank / Lender	11/11	12/11	01/12	02/12	03/12	04/12	05/12	06/12	07/12	08/12	09/12	10/12	Total	Trend
1 METLIFE BANK	1,273	1,321	1,379	1,132	929	911	928	1,246	250	10	3		9,382	▼
2 ONE REVERSE MORTGAGE LLC	398	419	439	417	384	407	410	403	401	418	365	261	4,722	▼
3 GENWORTH FINANCIAL HM EQUITY A	362	306	386	643	345	346	227	399	296	388	443	270	4,411	▼
4 URBAN FINANCIAL GROUP	284	357	354	350	224	281	309	357	298	309	282	160	3,565	▼
5 AMERICAN ADVISORS GROUP	244	184	227	186	238	293	205	231	252	547	410	470	3,487	▲
6 SECURITY ONE LENDING	121	172	220	241	234	244	274	262	231	338	264	636	3,237	▲
7 GENERATION MORTGAGE COMPANY	253	209	245	267	241	207	227	221	260	255	197	263	2,845	▲
8 THE FIRST NATIONAL BANK LAYTON	89	124	132	147	126	147	172	245	219	220	50	8	1,679	▼
9 REVERSE MORTGAGE USA INC	107	100	81	111	101	85	109	87	82	113	108	75	1,159	▼
10 SUN WEST MORTGAGE CO INC	2	14	78	159	139	152	84	74	64	43	43	56	908	▲
Top 10 SubTotal	3,133	3,206	3,541	3,653	2,961	3,073	2,945	3,525	2,353	2,641	2,165	2,199	35,395	▲
Industry Total	4,654	4,636	5,175	5,426	4,381	4,595	4,439	5,187	3,868	4,122	3,706	3,745	53,934	▲



Paid Advertisement

RMS introduces the newest path to success.

RMPATH | **RMS**
Reverse Mortgage Solutions, Inc.

Wholesale Lending • Correspondent Lending • Aggregation Partnering

Market Performance

Market	YTD Volume 2012	YTD Volume 2011	Chg %	Active Lenders 2012	Active Lenders 2011	Chg %	Volume / Lender 2012	Volume / Lender 2011	Chg %
Great Plains									
KANSAS CITY	358	490	-26.9 %	28	37	-24.3 %	2.8	3.9	-28.0 %
ST. LOUIS	279	383	-27.2 %	22	40	-45.0 %	3.0	3.2	-9.1 %
DES MOINES	231	271	-14.8 %	20	24	-16.7 %	2.7	3.8	-27.8 %
TOPEKA	159	177	-10.2 %	23	21	9.5 %	2.0	2.4	-17.2 %
OMAHA	113	194	-41.8 %	15	16	-6.3 %	1.9	3.4	-45.0 %
Region Total	1,140	1,515	-24.8 %	51	75	-32.0 %	5.0	6.3	-21.8 %
Mid-Atlantic									
PHILADELPHIA	1,780	2,384	-25.3 %	83	111	-25.2 %	5.2	6.7	-22.9 %
RICHMOND	1,339	2,027	-33.9 %	69	90	-23.3 %	4.3	5.7	-24.4 %
BALTIMORE	973	1,619	-39.9 %	61	93	-34.4 %	3.8	4.8	-21.8 %
WASH. D.C.	747	1,077	-30.6 %	61	74	-17.6 %	3.1	4.1	-23.7 %
PITTSBURGH	329	394	-16.5 %	33	48	-31.3 %	2.6	2.7	-6.6 %
WILMINGTON	234	321	-27.1 %	35	41	-14.6 %	1.9	2.4	-22.6 %
CHARLESTON	148	148	0.0 %	17	18	-5.6 %	2.8	2.1	31.5 %
Region Total	5,550	7,970	-30.4 %	150	219	-31.5 %	8.0	10.2	-21.4 %
Midwest									
CHICAGO	946	1,304	-27.5 %	49	104	-52.9 %	4.8	4.5	7.6 %
INDIANAPOLIS	550	631	-12.8 %	40	49	-18.4 %	3.9	4.4	-13.1 %
MILWAUKEE	469	716	-34.5 %	29	43	-32.6 %	3.5	4.8	-28.0 %
MINN. ST. PAUL	404	855	-52.7 %	32	43	-25.6 %	3.2	6.7	-52.2 %
CLEVELAND	389	504	-22.8 %	37	45	-17.8 %	2.9	3.6	-20.3 %
COLUMBUS	257	252	2.0 %	29	30	-3.3 %	2.9	2.8	4.0 %
GRAND RAPIDS	257	345	-25.5 %	21	33	-36.4 %	2.9	3.1	-6.7 %
SPRINGFIELD	209	239	-12.6 %	22	32	-31.3 %	2.3	2.4	-3.6 %
DETROIT	172	229	-24.9 %	22	32	-31.3 %	2.0	2.3	-12.1 %
CINCINNATI	164	249	-34.1 %	22	35	-37.1 %	2.4	2.4	1.9 %
FLINT	79	101	-21.8 %	17	26	-34.6 %	1.5	1.5	-2.4 %
Region Total	3,896	5,425	-28.2 %	111	228	-51.3 %	8.2	8.4	-2.4 %
New England									
BOSTON	836	1,216	-31.3 %	28	80	-65.0 %	6.9	5.4	26.8 %
HARTFORD	618	847	-27.0 %	53	72	-26.4 %	3.5	4.0	-10.7 %
BANGOR	231	297	-22.2 %	28	28	0.0 %	2.7	3.7	-25.7 %
MANCHESTER	192	273	-29.7 %	25	30	-16.7 %	2.3	3.1	-24.8 %
PROVIDENCE	153	196	-21.9 %	13	26	-50.0 %	2.7	2.8	-2.0 %
BURLINGTON	78	114	-31.6 %	10	12	-16.7 %	2.4	3.6	-32.8 %
Region Total	2,108	2,943	-28.4 %	80	150	-46.7 %	7.0	7.2	-2.1 %
New York/New Jersey									
NEW YORK	2,307	2,670	-13.6 %	63	127	-50.4 %	7.3	6.2	17.5 %
NEWARK	950	1,450	-34.5 %	78	95	-17.9 %	3.3	5.4	-38.5 %
CAMDEN	836	1,060	-21.1 %	71	85	-16.5 %	3.1	3.8	-17.9 %
ALBANY	548	662	-17.2 %	37	49	-24.5 %	3.8	3.7	2.4 %
BUFFALO	292	321	-9.0 %	19	25	-24.0 %	3.8	3.6	7.7 %
Region Total	4,933	6,163	-20.0 %	118	200	-41.0 %	8.6	8.4	2.4 %
Northwest/Alaska									
SEATTLE	917	1,287	-28.7 %	58	79	-26.6 %	3.6	4.6	-22.5 %
PORTLAND	761	1,090	-30.2 %	54	90	-40.0 %	3.3	3.9	-15.0 %
BOISE	251	404	-37.9 %	34	47	-27.7 %	2.2	3.2	-29.8 %
SPOKANE	160	203	-21.2 %	28	33	-15.2 %	1.6	2.0	-20.2 %
ANCHORAGE	42	78	-46.2 %	9	8	12.5 %	1.4	3.7	-62.0 %
Region Total	2,131	3,062	-30.4 %	89	138	-35.5 %	5.5	6.9	-19.9 %
Pacific/Hawaii									
LOS ANGELES	1,946	2,632	-26.1 %	84	159	-47.2 %	6.3	6.8	-6.3 %

Market	YTD Volume 2012	YTD Volume 2011	Chg %	Active Lenders 2012	Active Lenders 2011	Chg %	Volume / Lender 2012	Volume / Lender 2011	Chg %
SANTA ANA	1,344	1,657	-18.9 %	72	128	-43.8 %	5.4	5.0	7.9 %
SAN FRANCISCO	1,143	1,828	-37.5 %	59	100	-41.0 %	5.2	6.1	-14.0 %
PHOENIX	653	943	-30.8 %	44	56	-21.4 %	4.0	5.7	-28.8 %
SAN DIEGO	648	851	-23.9 %	47	85	-44.7 %	4.0	4.2	-4.5 %
SACRAMENTO	540	803	-32.8 %	44	69	-36.2 %	3.7	4.1	-9.8 %
FRESNO	236	292	-19.2 %	32	38	-15.8 %	2.0	2.5	-21.5 %
HONOLULU	197	273	-27.8 %	18	38	-52.6 %	2.7	2.4	11.4 %
TUCSON	160	242	-33.9 %	24	31	-22.6 %	1.9	2.4	-22.5 %
LAS VEGAS	158	220	-28.2 %	20	22	-9.1 %	1.9	2.9	-35.2 %
RENO	82	111	-26.1 %	15	17	-11.8 %	1.5	2.0	-24.7 %
Region Total	7,107	9,852	-27.9 %	156	322	-51.6 %	11.2	11.6	-3.3 %
Rocky Mountain									
DENVER	899	1,078	-16.6 %	48	72	-33.3 %	5.0	5.1	-1.1 %
SALT LAKE CITY	838	801	4.6 %	37	64	-42.2 %	4.8	3.7	30.1 %
HELENA	171	267	-36.0 %	22	23	-4.3 %	2.1	2.7	-23.0 %
CASPER	106	144	-26.4 %	22	18	22.2 %	1.7	2.5	-33.4 %
SIOUX FALLS	42	74	-43.2 %	8	9	-11.1 %	2.0	3.1	-34.8 %
FARGO	22	42	-47.6 %	7	4	75.0 %	1.4	3.6	-60.4 %
Region Total	2,078	2,406	-13.6 %	86	124	-30.6 %	6.2	6.0	4.1 %
Southeast/Caribbean									
GREENSBORO	1,281	1,563	-18.0 %	41	30	36.7 %	6.5	11.8	-45.3 %
CARIBBEAN	1,257	1,377	-8.7 %	23	21	9.5 %	8.2	11.5	-28.3 %
MIAMI	1,082	1,449	-25.3 %	70	128	-45.3 %	3.9	4.5	-12.8 %
ATLANTA	875	1,395	-37.3 %	45	79	-43.0 %	4.6	5.4	-15.6 %
BIRMINGHAM	772	1,003	-23.0 %	40	54	-25.9 %	4.5	5.0	-10.8 %
COLUMBIA	715	1,050	-31.9 %	44	47	-6.4 %	3.7	6.0	-38.0 %
JACKSONVILLE	626	912	-31.4 %	43	100	-57.0 %	3.6	3.9	-8.5 %
TAMPA	596	948	-37.1 %	51	90	-43.3 %	3.4	3.9	-13.6 %
KNOXVILLE	503	549	-8.4 %	38	45	-15.6 %	3.4	3.7	-7.6 %
ORLANDO	452	621	-27.2 %	47	81	-42.0 %	2.8	3.7	-25.1 %
NASHVILLE	429	399	7.5 %	33	43	-23.3 %	3.0	3.1	-1.9 %
JACKSON	396	459	-13.7 %	22	29	-24.1 %	4.0	4.2	-3.0 %
LOUISVILLE	343	385	-10.9 %	33	36	-8.3 %	3.3	3.1	5.4 %
MEMPHIS	191	203	-5.9 %	29	32	-9.4 %	2.0	2.1	-8.2 %
Region Total	9,518	12,313	-22.7 %	171	353	-51.6 %	11.5	12.1	-5.0 %
Southwest									
HOUSTON	1,083	1,397	-22.5 %	54	55	-1.8 %	4.7	6.4	-26.5 %
SAN ANTONIO	894	1,317	-32.1 %	49	66	-25.8 %	3.9	5.1	-23.4 %
DALLAS	838	988	-15.2 %	56	73	-23.3 %	3.7	4.0	-9.6 %
FT. WORTH	769	980	-21.5 %	57	63	-9.5 %	3.4	3.8	-11.8 %
NEW ORLEANS	714	837	-14.7 %	29	50	-42.0 %	4.3	4.1	4.0 %
LITTLE ROCK	434	572	-24.1 %	31	38	-18.4 %	3.2	3.8	-16.4 %
LUBBOCK	412	453	-9.1 %	41	43	-4.7 %	2.6	3.0	-13.0 %
ALBUQUERQUE	342	502	-31.9 %	36	42	-14.3 %	2.4	2.8	-16.2 %
OKLAHOMA CITY	285	269	5.9 %	25	25	0.0 %	2.9	2.8	6.8 %
TULSA	255	256	-0.4 %	22	26	-15.4 %	2.7	2.9	-6.3 %
SHREVEPORT	157	184	-14.7 %	19	26	-26.9 %	1.8	2.2	-18.9 %
Region Total	6,183	7,755	-20.3 %	121	174	-30.5 %	11.2	11.5	-2.6 %
Grand Total	44,644	59,404	-24.8 %	549	1,293	-57.5 %	16.6	15.8	5.3 %

Analyze your top competitors and leverage the competitive strategies that work for them. Call us for a free, no obligation, Competitive Landscape Report at (682) 651-5632.

Top 100 Lenders - Year to Date

Rank	Lender	Vol 2012	Vol 2011	Chg %	Mkt Share 2012	Mkt Share 2011	Chg %	Top State
1	METLIFE BANK	6788	7918	-14 %	15.2 %	13.3 %	14 %	CA
2	ONE REVERSE MORTGAGE LLC	3905	3802	3 %	8.7 %	6.4 %	37 %	TX
3	GENWORTH FINANCIAL HM EQ	3743	1642	128 %	8.4 %	2.8 %	203 %	CA
4	AMERICAN ADVISORS GROUP	3059	1387	121 %	6.9 %	2.3 %	193 %	TX
5	SECURITY ONE LENDING	2944	1200	145 %	6.6 %	2.0 %	226 %	CA
6	URBAN FINANCIAL GROUP	2924	3089	-5 %	6.5 %	5.2 %	26 %	CA
7	GENERATION MORTGAGE COMP	2383	2549	-7 %	5.3 %	4.3 %	24 %	NY
8	THE FIRST NATIONAL BANK	1466	550	167 %	3.3 %	0.9 %	255 %	CA
9	REVERSE MORTGAGE USA INC	952	760	25 %	2.1 %	1.3 %	67 %	TX
10	SUN WEST MORTGAGE CO INC	892	252	254 %	2.0 %	0.4 %	371 %	CA
11	CHERRY CREEK MORTGAGE CO	657	209	214 %	1.5 %	0.4 %	318 %	TX
12	NEW DAY FINANCIAL LLC	617	595	4 %	1.4 %	1.0 %	38 %	TX
13	M & T BANK	493	460	7 %	1.1 %	0.8 %	43 %	NY
14	SENIOR MORTGAGE BANKERS	382	500	-24 %	0.9 %	0.8 %	2 %	ZZ
15	GREENLIGHT FINANCIAL SER	369	1	36,800 %	0.8 %	0.0 %	49,000 %	CA
16	MONEY HOUSE INC	365	369	-1 %	0.8 %	0.6 %	32 %	ZZ
17	NET EQUITY FINANCIAL INC	360	274	31 %	0.8 %	0.5 %	75 %	PA
18	ASSOCIATED MORTGAGE BANK	342	66	418 %	0.8 %	0.1 %	590 %	NY
19	MAVERICK FUNDING CORP	332	0		0.7 %	0.0 %		NJ
20	GMFS LLC	332	112	196 %	0.7 %	0.2 %	294 %	LA
21	ROYAL UNITED MORTGAGE LL	297	293	1 %	0.7 %	0.5 %	35 %	TX
22	NATIONWIDE EQUITIES CORP	279	149	87 %	0.6 %	0.3 %	149 %	NY
23	ASPIRE FINANCIAL INC	276	231	19 %	0.6 %	0.4 %	59 %	TX
24	PLAZA HOME MORTGAGE INC	272	237	15 %	0.6 %	0.4 %	53 %	CA
25	REVERSE MORTGAGE SOLUTIO	258	130	98 %	0.6 %	0.2 %	164 %	TX
26	OPEN MORTGAGE LLC	229	137	67 %	0.5 %	0.2 %	122 %	CA
27	FIRSTBANK	204	3	6,700 %	0.5 %	0.0 %	8,948 %	AL
28	TOWNEBANK	202	29	597 %	0.5 %	0.0 %	827 %	VA
29	GREAT OAK LENDING	201	390	-48 %	0.5 %	0.7 %	-31 %	MD
30	MAS ASSOCIATES LLC	198	198	0 %	0.4 %	0.3 %	33 %	MD
31	HIGH TECH LENDING INC	182	76	139 %	0.4 %	0.1 %	219 %	CA
32	UNITED NORTHERN MORTGAGE	175	75	133 %	0.4 %	0.1 %	210 %	NY
33	ATLANTIC BAY MORTGAGE GR	166	61	172 %	0.4 %	0.1 %	262 %	VA
34	PROFICIO MORTGAGE VENTUR	163	23	609 %	0.4 %	0.0 %	843 %	TX
35	MCM HOLDINGS INC	156	62	152 %	0.3 %	0.1 %	235 %	FL
36	AMERICAN PACIFIC MORTGAG	141	125	13 %	0.3 %	0.2 %	50 %	CA
37	AXIA FINANCIAL LLC	126	59	114 %	0.3 %	0.1 %	184 %	WA
38	SIDUS FINANCIAL LLC	126	125	1 %	0.3 %	0.2 %	34 %	NC
39	TOP FLITE FINANCIAL INC	121	31	290 %	0.3 %	0.1 %	419 %	GA
40	NETWORK FUNDING LP	119	111	7 %	0.3 %	0.2 %	43 %	TX
41	CONTOUR MORTGAGE CORPORA	117	29	303 %	0.3 %	0.0 %	437 %	NY
42	SUN AMERICAN MORTGAGE CO	110	118	-7 %	0.2 %	0.2 %	24 %	AZ
43	MORTGAGESHOP LLC	108	63	71 %	0.2 %	0.1 %	128 %	VA
44	CHRISTENSEN FINANCIAL IN	107	88	22 %	0.2 %	0.1 %	62 %	FL
45	CONTINENTAL HOME LOANS I	107	28	282 %	0.2 %	0.0 %	408 %	NY
46	UNIVERSAL LENDING CORPOR	107	83	29 %	0.2 %	0.1 %	72 %	CO
47	FIRSTAR BANK NA	102	0		0.2 %	0.0 %		OK
48	HARVARD HOME MORTGAGE IN	102	102	0 %	0.2 %	0.2 %	33 %	NC
49	VIG MORTGAGE CORP	102	96	6 %	0.2 %	0.2 %	41 %	ZZ
50	VAN DYK MORTGAGE CORPORA	101	34	197 %	0.2 %	0.1 %	295 %	TX

Rank	Lender	Vol 2012	Vol 2011	Chg %	Mkt Share 2012	Mkt Share 2011	Chg %	Top State
51	VANGUARD FUNDING LLC	100	41	144 %	0.2 %	0.1 %	225 %	NY
52	SOUTHERN TRUST MORTGAGE	99	37	168 %	0.2 %	0.1 %	256 %	VA
53	GATEWAY FUNDING DIVERSIF	98	79	24 %	0.2 %	0.1 %	65 %	PA
54	STERLING SAVINGS BANK	98	69	42 %	0.2 %	0.1 %	89 %	OR
55	JAMES B NUTTER AND COMPA	92	73	26 %	0.2 %	0.1 %	68 %	KS
56	DAS ACQUISITION CO LLC	91	34	168 %	0.2 %	0.1 %	256 %	MO
57	VALUE FINANCIAL MORTGAGE	91	71	28 %	0.2 %	0.1 %	71 %	FL
58	FULTON BANK NATIONAL ASS	89	81	10 %	0.2 %	0.1 %	46 %	PA
59	WEST TOWN SAVINGS BANK	88	99	-11 %	0.2 %	0.2 %	18 %	NC
60	NEW AMERICAN MORTGAGE LL	87	38	129 %	0.2 %	0.1 %	205 %	VA
61	SUCCESS MORTGAGE PARTNER	82	43	91 %	0.2 %	0.1 %	154 %	SC
62	ADVISORS MORTGAGE GROUP	79	36	119 %	0.2 %	0.1 %	192 %	NY
63	OCEANFIRST BANK	79	62	27 %	0.2 %	0.1 %	70 %	NJ
64	ENVOY MORTGAGE LTD	76	112	-32 %	0.2 %	0.2 %	-10 %	WI
65	MORTGAGE SERVICES III LL	74	47	57 %	0.2 %	0.1 %	110 %	IL
66	METRO ISLAND MORTGAGE IN	69	85	-19 %	0.2 %	0.1 %	8 %	ZZ
67	LIVE WELL FINANCIAL INC	68	145	-53 %	0.2 %	0.2 %	-38 %	CA
68	PRIMARY RESIDENTIAL MORT	68	79	-14 %	0.2 %	0.1 %	15 %	TN
69	FIRST CENTURY BANK NA	68	23	196 %	0.2 %	0.0 %	293 %	GA
70	HOMESTREET BANK	67	35	91 %	0.2 %	0.1 %	155 %	WA
71	DOLLAR BANK FSB	64	21	205 %	0.1 %	0.0 %	306 %	OH
72	GERSHMAN INVESTMENT CORP	62	47	32 %	0.1 %	0.1 %	76 %	MO
73	PEOPLES BANK	60	5	1,100 %	0.1 %	0.0 %	1,497 %	NM
74	FRANKLIN FIRST FINANCIAL	55	51	8 %	0.1 %	0.1 %	43 %	NY
75	WHOLESALE CAPITAL CORP	54	38	42 %	0.1 %	0.1 %	89 %	CA
76	COLONIAL SAVINGS FA	54	47	15 %	0.1 %	0.1 %	53 %	TX
77	PRIMELENDING A PLAINSCAP	54	215	-75 %	0.1 %	0.4 %	-67 %	VA
78	COMMUNITY FIRST BANK	53	33	61 %	0.1 %	0.1 %	114 %	SC
79	MAIN STREET HOME LOANS L	52	6	767 %	0.1 %	0.0 %	1,053 %	GA
80	PACIFIC RESIDENTIAL MORT	52	9	478 %	0.1 %	0.0 %	669 %	OR
81	BANK OF ENGLAND	51	15	240 %	0.1 %	0.0 %	352 %	NC
82	AMERICAN NATIONWIDE MORT	48	20	140 %	0.1 %	0.0 %	219 %	TX
83	LEADER ONE FINANCIAL COR	47	15	213 %	0.1 %	0.0 %	317 %	KS
84	PINNACLE CAPITAL MORTGAG	47	55	-15 %	0.1 %	0.1 %	14 %	WA
85	CLIFFCO INC	45	11	309 %	0.1 %	0.0 %	444 %	NY
86	WELLS FARGO BANK NA	45	14911	-100 %	0.1 %	25.1 %	-100 %	NJ
87	GUILD MORTGAGE COMPANY	45	51	-12 %	0.1 %	0.1 %	17 %	MT
88	EASTERN BANK	43	32	34 %	0.1 %	0.1 %	79 %	MA
89	SPECTRA FUNDING INC	43	9	378 %	0.1 %	0.0 %	536 %	MD
90	INTEGRATED FINANCIAL GRO	41	16	156 %	0.1 %	0.0 %	241 %	PA
91	FAIRWAY INDEPENDENT MORT	41	27	52 %	0.1 %	0.0 %	102 %	AZ
92	EQUIPOINT FINANCIAL NETW	41	279	-85 %	0.1 %	0.5 %	-80 %	TX
93	EQUITY LOANS LLC	39	34	15 %	0.1 %	0.1 %	53 %	NJ
94	AMERICAN NEIGHBORHOOD MT	37	5	640 %	0.1 %	0.0 %	885 %	NJ
95	RESIDENTIAL HOME FUNDING	37	22	68 %	0.1 %	0.0 %	124 %	NY
96	GUARANTEED HOME MTG CO I	37	55	-33 %	0.1 %	0.1 %	-10 %	NY
97	HAMILTON GROUP FUNDING I	36	8	350 %	0.1 %	0.0 %	499 %	FL
98	GUARANTEED RATE INC	36	13	177 %	0.1 %	0.0 %	268 %	MN
99	FIRST PRIORITY FINANCIAL	35	31	13 %	0.1 %	0.1 %	50 %	WA
100	DIRECTORS FINANCIAL GROU	35	9	289 %	0.1 %	0.0 %	417 %	CA

Paid Advertisement

The leaves may be changing, but PRC consistently provides exceptional title and settlement services throughout the seasons.

PRC
PREMIER REVERSE CLOSINGS
DIVISION OF NATIONAL CLOSING SOLUTIONS
DIVISION OF PLACER TITLE COMPANY

800.542.4113 | www.PRCclosings.com

About Reverse Market Insight, Inc.
Reverse Market Insight (RMI) is the premier provider of market intelligence and strategic advisory solutions in the reverse mortgage marketplace.

RMI is proud to serve 8 of the top 10 reverse mortgage lenders as clients and is the exclusive strategic partner of the National Reverse Mortgage Lenders Association (NRMLA) for market intelligence.

25910 Acero | Suite 140 | Mission Viejo, CA 92691
(682) 651-5632
<http://www.rminight.net>

Disclaimer: Although a significant effort is made to assure the accuracy and completeness of the information provided, Reverse Market Insight, Inc. makes no express or implied warranty as to the accuracy, adequacy, completeness, legality of the information. Reverse Market Insight, Inc. does not endorse any products or services advertised on this report. We also waive any liability of any loss or damage that may be incurred as a result of the use of such advertised products or services.