

HECM Lenders (FHA Approved Only)

Industry Overview

HECMs Endorsed through March 2016

Next Release Date: Week 1 of May

Endorsement Growth Change

-1.0 %

Competition Growth

-2.0 %

Active Lender Change

-5

Figures above reflect change from prior month

PERFORMANCE

Rank/Region	04/15	05/15	06/15	07/15	08/15	09/15	10/15	11/15	12/15	01/16	02/16	03/16	Trend
1 Pacific/Hawaii	1,003	996	1,195	1,083	2,090	1,427	1,045	911	1,135	1,090	1,321	1,292	▼
2 Southeast/Caribbean	997	1,007	1,056	1,081	932	902	864	897	898	758	841	899	▲
3 Southwest	536	441	684	540	473	410	456	539	483	420	567	460	▼
4 Mid-Atlantic	463	422	508	601	457	400	432	343	336	321	290	370	▲
5 Midwest	388	406	466	455	440	401	355	332	351	326	363	411	▲
6 New York/New Jersey	420	429	487	484	440	391	424	306	311	290	306	336	▲
7 Rocky Mountain	217	177	329	263	231	231	285	278	226	241	315	246	▼
8 Northwest/Alaska	174	154	215	206	395	243	182	174	230	190	279	275	▼
9 New England	193	155	205	232	194	175	190	128	164	163	182	157	▼
10 Great Plains	106	86	151	84	98	91	99	115	99	91	115	89	▼
Total	4,497	4,273	5,296	5,029	5,750	4,671	4,332	4,023	4,233	3,890	4,579	4,535	▼

Find out where the top five markets are in your area by state, county or even zip code to help improve sales performance, market share and maximize opportunities.

Call us for a free briefing at (682) 651-5632.

*Paid Advertisement



Reverse Loans.
One Platform.
All Connected.



WWW.REVERSEVISION.COM | 858.433.4970 | CONNECT@REVERSEVISION.COM

REVERSE MARKET
INSIGHT

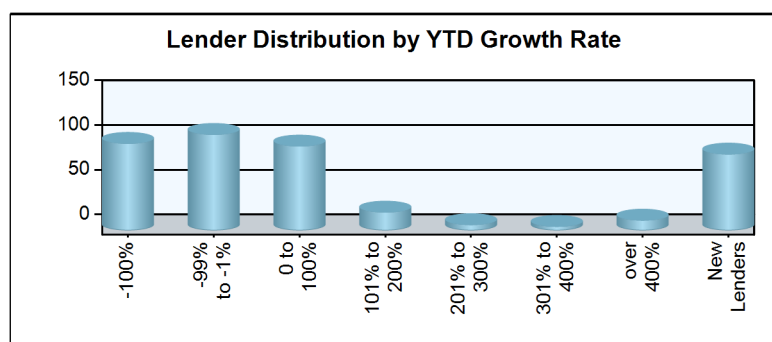
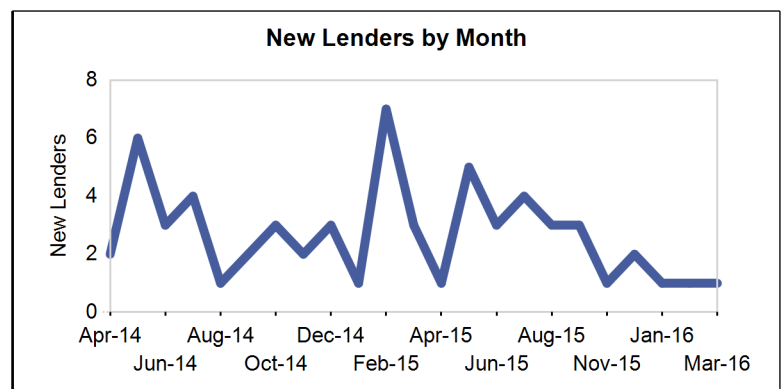
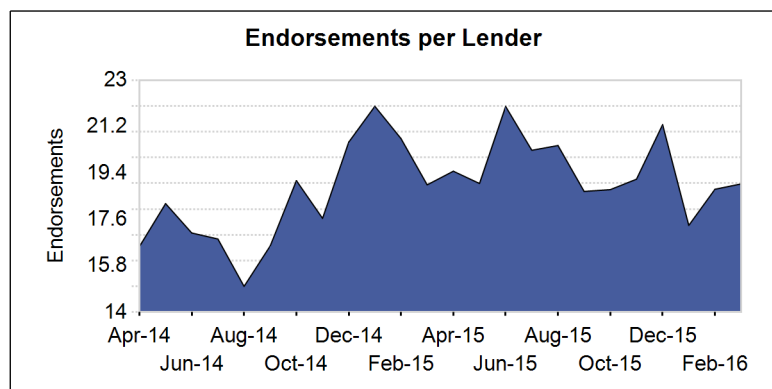
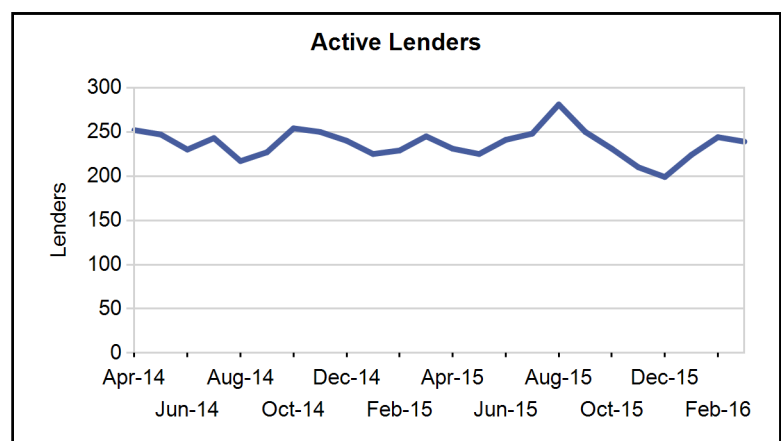
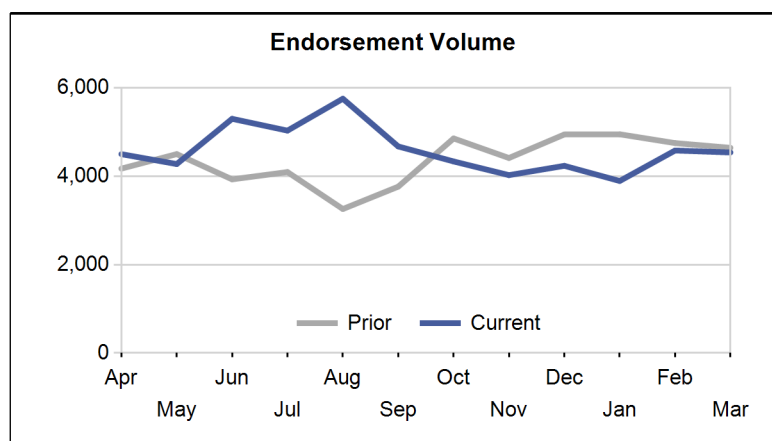
(682) 651-5632
info@rminight.net
www.rminight.net

Interested in industry commentary, data and analysis? [CLICK HERE](#)
Subscribe to our [FREE ReverseIQ Newsletter](#) and [FREE Industry Reports](#)

Competition

Top 10 Lenders

Rank / Lender	04/15	05/15	06/15	07/15	08/15	09/15	10/15	11/15	12/15	01/16	02/16	03/16	Total	Trend
1 AMERICAN ADVISORS GROUP	1,078	1,010	1,201	1,256	1,220	1,239	1,092	1,022	1,028	826	917	999	12,888	▲
2 ONE REVERSE MORTGAGE LLC	439	518	534	333	393	353	317	358	351	287	330	322	4,535	▼
3 RMS/SECURITY ONE LENDING	423	244	343	389	474	265	282	320	413	356	406	351	4,266	▼
4 FINANCE OF AMERICA REVERSE LLC	338	270	326	478	495	315	322	302	326	323	368	286	4,149	▼
5 LIBERTY HOME EQUITY SOLUTIONS INC	307	321	433	370	570	401	340	143	78	291	490	338	4,082	▼
6 REVERSE MORTGAGE FUNDING LLC	259	165	200	251	236	175	197	192	207	163	190	227	2,462	▲
7 LIVE WELL FINANCIAL INC	161	173	218	177	208	131	132	203	172	150	130	270	2,125	▲
8 SYNERGY ONE LENDING INC		1	55	38	87	148	128	171	200	141	154	166	1,289	▲
9 HOME POINT FINANCIAL CORPORATION	90	96	149	88	88	122	115	71	99	110	88	87	1,203	▼
10 HIGH TECH LENDING INC	45	66	107	77	100	86	74	58	60	55	96	114	938	▲
Top 10 SubTotal	3,140	2,864	3,566	3,457	3,871	3,235	2,999	2,840	2,934	2,702	3,169	3,160	37,937	▼
Industry Total	4,497	4,273	5,296	5,029	5,750	4,671	4,332	4,023	4,233	3,890	4,579	4,535	55,108	▼



Paid Advertisement

Find Opportunity Faster

Dashboard

Market Performance

Market	YTD Volume 2016	YTD Volume 2015	Chg %	Active Lenders 2016	Active Lenders 2015	Chg %	Volume / Lender 2016	Volume / Lender 2015	Chg %
Great Plains									
KANSAS CITY	88	93	-5.4 %	19	20	-5.0 %	2.4	2.6	-5.8 %
ST. LOUIS	64	76	-15.8 %	18	14	28.6 %	2.0	3.0	-34.1 %
DES MOINES	57	79	-27.8 %	12	12	0.0 %	2.6	3.7	-29.4 %
TOPEKA	47	49	-4.1 %	9	14	-35.7 %	2.9	1.9	56.7 %
OMAHA	39	53	-26.4 %	13	13	0.0 %	1.6	2.5	-37.9 %
Region Total	295	350	-15.7 %	38	32	18.8 %	3.7	5.5	-31.6 %
Mid-Atlantic									
PHILADELPHIA	249	400	-37.8 %	36	41	-12.2 %	3.5	4.7	-25.0 %
RICHMOND	210	341	-38.4 %	37	36	2.8 %	2.9	4.6	-37.7 %
WASH. D.C.	182	225	-19.1 %	27	30	-10.0 %	3.3	4.6	-26.6 %
BALTIMORE	150	228	-34.2 %	29	32	-9.4 %	2.9	3.9	-26.0 %
PITTSBURGH	87	119	-26.9 %	20	16	25.0 %	2.5	3.4	-26.0 %
CHARLESTON	53	57	-7.0 %	12	12	0.0 %	2.3	3.3	-29.7 %
WILMINGTON	50	57	-12.3 %	19	20	-5.0 %	1.7	1.8	-5.5 %
Region Total	981	1,427	-31.3 %	73	76	-3.9 %	6.5	9.3	-30.6 %
Midwest									
CHICAGO	251	279	-10.0 %	28	35	-20.0 %	4.7	4.7	1.4 %
INDIANAPOLIS	162	174	-6.9 %	23	21	9.5 %	3.4	4.0	-16.5 %
MINN. ST. PAUL	120	120	0.0 %	21	23	-8.7 %	3.1	3.2	-1.8 %
MILWAUKEE	108	157	-31.2 %	25	27	-7.4 %	2.6	3.3	-20.4 %
CLEVELAND	107	163	-34.4 %	22	22	0.0 %	2.7	4.4	-39.8 %
DETROIT	86	102	-15.7 %	18	16	12.5 %	2.9	3.1	-4.0 %
GRAND RAPIDS	80	111	-27.9 %	16	13	23.1 %	2.9	3.8	-23.5 %
COLUMBUS	76	104	-26.9 %	19	19	0.0 %	2.8	3.1	-10.1 %
CINCINNATI	49	52	-5.8 %	17	9	88.9 %	1.7	2.7	-36.3 %
SPRINGFIELD	41	65	-36.9 %	11	14	-21.4 %	2.3	2.8	-17.2 %
FLINT	20	33	-39.4 %	6	11	-45.5 %	1.8	1.9	-1.9 %
Region Total	1,100	1,360	-19.1 %	69	77	-10.4 %	8.0	8.9	-10.8 %
New England									
BOSTON	230	212	8.5 %	24	23	4.3 %	5.0	5.0	1.5 %
HARTFORD	112	158	-29.1 %	23	24	-4.2 %	2.8	3.8	-25.3 %
BANGOR	63	55	14.5 %	13	11	18.2 %	2.4	2.7	-10.5 %
MANCHESTER	48	51	-5.9 %	17	14	21.4 %	1.8	2.1	-15.7 %
PROVIDENCE	25	39	-35.9 %	6	13	-53.8 %	2.3	1.8	29.4 %
BURLINGTON	24	32	-25.0 %	9	6	50.0 %	1.8	2.8	-37.9 %
Region Total	502	547	-8.2 %	46	40	15.0 %	5.8	6.4	-9.5 %
New York/New Jersey									
NEW YORK	456	646	-29.4 %	45	47	-4.3 %	5.1	6.8	-25.8 %
NEWARK	196	248	-21.0 %	43	42	2.4 %	2.8	3.4	-19.5 %
CAMDEN	142	195	-27.2 %	34	33	3.0 %	2.5	3.3	-22.6 %
ALBANY	84	157	-46.5 %	20	28	-28.6 %	2.5	2.9	-13.8 %
BUFFALO	54	90	-40.0 %	8	16	-50.0 %	3.3	3.4	-4.7 %
Region Total	932	1,336	-30.2 %	77	83	-7.2 %	6.1	8.4	-26.7 %
Northwest/Alaska									
SEATTLE	332	264	25.8 %	46	39	17.9 %	3.7	3.7	2.0 %
PORTLAND	254	194	30.9 %	49	34	44.1 %	2.8	3.1	-10.7 %
BOISE	104	99	5.1 %	26	21	23.8 %	2.4	2.7	-10.3 %
SPOKANE	46	55	-16.4 %	16	19	-15.8 %	1.6	2.0	-20.9 %
ANCHORAGE	8	20	-60.0 %	5	5	0.0 %	1.7	2.0	-16.7 %
Region Total	744	632	17.7 %	66	59	11.9 %	5.2	5.5	-5.3 %
Pacific/Hawaii									
LOS ANGELES	847	837	1.2 %	70	59	18.6 %	6.5	7.1	-8.7 %

Market	YTD Volume 2016	YTD Volume 2015	Chg %	Active Lenders 2016	Active Lenders 2015	Chg %	Volume / Lender 2016	Volume / Lender 2015	Chg %
SANTA ANA	689	681	1.2 %	66	50	32.0 %	5.6	6.8	-17.6 %
SAN FRANCISCO	624	614	1.6 %	51	50	2.0 %	6.1	6.2	-2.0 %
PHOENIX	409	368	11.1 %	47	36	30.6 %	4.5	5.2	-13.9 %
SACRAMENTO	355	260	36.5 %	41	37	10.8 %	4.4	3.8	17.4 %
SAN DIEGO	286	279	2.5 %	39	40	-2.5 %	3.7	3.9	-3.8 %
FRESNO	170	132	28.8 %	26	29	-10.3 %	3.3	2.9	12.9 %
LAS VEGAS	126	147	-14.3 %	21	17	23.5 %	3.5	4.9	-28.2 %
RENO	84	62	35.5 %	18	15	20.0 %	2.5	2.4	3.4 %
TUCSON	63	64	-1.6 %	15	12	25.0 %	2.3	2.6	-11.2 %
HONOLULU	50	51	-2.0 %	13	16	-18.8 %	2.0	2.0	3.4 %
Region Total	3,703	3,495	6.0 %	134	109	22.9 %	13.8	15.5	-10.8 %
Rocky Mountain									
DENVER	456	318	43.4 %	45	38	18.4 %	4.9	4.5	8.8 %
SALT LAKE CITY	239	258	-7.4 %	25	26	-3.8 %	4.2	4.4	-3.5 %
HELENA	58	58	0.0 %	14	12	16.7 %	2.3	2.8	-20.5 %
CASPER	23	23	0.0 %	8	10	-20.0 %	1.8	1.5	17.0 %
FARGO	15	11	36.4 %	5	4	25.0 %	1.7	1.7	1.7 %
SIOUX FALLS	11	14	-21.4 %	7	4	75.0 %	1.1	1.7	-36.0 %
Region Total	802	682	17.6 %	61	59	3.4 %	6.1	6.0	1.3 %
Southeast/Caribbean									
MIAMI	421	478	-11.9 %	51	58	-12.1 %	4.3	4.4	-1.7 %
GREENSBORO	335	355	-5.6 %	39	28	39.3 %	4.6	6.1	-24.8 %
ATLANTA	264	293	-9.9 %	33	28	17.9 %	4.5	5.8	-22.8 %
TAMPA	234	262	-10.7 %	38	36	5.6 %	3.6	3.9	-6.3 %
COLUMBIA	227	244	-7.0 %	33	26	26.9 %	3.5	4.1	-15.9 %
ORLANDO	209	211	-0.9 %	36	37	-2.7 %	3.0	3.3	-7.2 %
JACKSONVILLE	179	185	-3.2 %	24	25	-4.0 %	3.7	3.6	2.6 %
BIRMINGHAM	145	180	-19.4 %	21	25	-16.0 %	3.7	4.0	-7.0 %
KNOXVILLE	113	142	-20.4 %	18	20	-10.0 %	3.0	3.5	-15.1 %
LOUISVILLE	93	118	-21.2 %	16	18	-11.1 %	3.0	3.7	-19.5 %
NASHVILLE	90	99	-9.1 %	22	15	46.7 %	2.5	3.5	-27.8 %
CARIBBEAN	84	135	-37.8 %	12	12	0.0 %	3.6	6.0	-40.3 %
JACKSON	73	105	-30.5 %	14	11	27.3 %	2.9	4.8	-39.3 %
MEMPHIS	31	50	-38.0 %	9	12	-25.0 %	1.7	2.5	-30.3 %
Region Total	2,498	2,857	-12.6 %	102	115	-11.3 %	11.4	12.6	-10.1 %
Southwest									
HOUSTON	287	289	-0.7 %	38	37	2.7 %	3.8	4.8	-20.2 %
SAN ANTONIO	219	248	-11.7 %	31	31	0.0 %	3.7	4.2	-11.8 %
DALLAS	203	217	-6.5 %	31	32	-3.1 %	3.5	3.6	-4.2 %
FT. WORTH	183	199	-8.0 %	31	30	3.3 %	3.3	3.5	-5.9 %
NEW ORLEANS	165	184	-10.3 %	20	20	0.0 %	4.5	4.4	2.5 %
ALBUQUERQUE	83	111	-25.2 %	16	22	-27.3 %	2.5	3.3	-23.8 %
LITTLE ROCK	77	91	-15.4 %	13	12	8.3 %	3.0	3.9	-22.9 %
TULSA	74	91	-18.7 %	16	13	23.1 %	2.4	3.5	-30.4 %
LUBBOCK	67	92	-27.2 %	18	16	12.5 %	2.2	3.0	-26.8 %
OKLAHOMA CITY	64	83	-22.9 %	14	14	0.0 %	2.6	3.2	-18.4 %
SHREVEPORT	25	42	-40.5 %	10	9	11.1 %	1.4	2.1	-32.2 %
Region Total	1,447	1,647	-12.1 %	69	77	-10.4 %	9.8	11.0	-10.9 %
Grand Total	13,004	14,333	-9.3 %	327	339	-3.5 %	18.4	20.6	-10.6 %

Analyze your top competitors and leverage the competitive strategies that work for them. Call us for a free, no obligation, Competitive Landscape Report at (682) 651-5632.

Top 100 Lenders - Year to Date

Rank	Lender	Vol 2016	Vol 2015	Chg %	Mkt Share 2016	Mkt Share 2015	Chg %	Top State
1	AMERICAN ADVISORS GROUP	2742	3506	-22%	21.1%	24.5%	-14%	CA
2	LIBERTY HOME EQUITY SOLU	1119	912	23%	8.6%	6.4%	35%	CA
3	RMS/SECURITY ONE LENDING	1113	1399	-20%	8.6%	9.8%	-12%	CA
4	FINANCE OF AMERICA REVER	977	1116	-12%	7.5%	7.8%	-4%	CA
5	ONE REVERSE MORTGAGE LLC	939	1449	-35%	7.2%	10.1%	-29%	CA
6	REVERSE MORTGAGE FUNDING	580	498	16%	4.5%	3.5%	28%	CA
7	LIVE WELL FINANCIAL INC	550	395	39%	4.2%	2.8%	53%	CA
8	SYNERGY ONE LENDING INC	461	0		3.5%	0.0%		CA
9	HOME POINT FINANCIAL COR	285	321	-11%	2.2%	2.2%	-2%	CA
10	NATIONWIDE EQUITIES CORP	277	112	147%	2.1%	0.8%	173%	CA
11	HIGH TECH LENDING INC	265	174	52%	2.0%	1.2%	68%	CA
12	OPEN MORTGAGE LLC	147	164	-10%	1.1%	1.1%	-1%	CA
13	FIRSTBANK	138	91	52%	1.1%	0.6%	67%	FL
14	THE FEDERAL SAVINGS BANK	119	95	25%	0.9%	0.7%	38%	CA
15	ADVISORS MORTGAGE GROUP	115	102	13%	0.9%	0.7%	24%	CA
16	UNITED NORTHERN MORTGAGE	103	245	-58%	0.8%	1.7%	-54%	NY
17	CHERRY CREEK MORTGAGE CO	97	161	-40%	0.7%	1.1%	-34%	UT
18	REVERSE MORTGAGESCOM INC	96	0		0.7%	0.0%		FL
19	SUN WEST MORTGAGE CO INC	96	131	-27%	0.7%	0.9%	-19%	CA
20	PEOPLES BANK	96	92	4%	0.7%	0.6%	15%	CA
21	PLAZA HOME MORTGAGE INC	89	125	-29%	0.7%	0.9%	-22%	CA
22	RESOLUTE BANK	83	0		0.6%	0.0%		CA
23	PROFICIO MORTGAGE VENTUR	80	350	-77%	0.6%	2.4%	-75%	FL
24	FAIRWAY INDEPENDENT MORT	80	1	7,900%	0.6%	0.0%	8,718%	WI
25	MCM HOLDINGS INC	72	79	-9%	0.6%	0.6%	0%	FL
26	LONGBRIDGE FINANCIAL LLC	68	2	3,300%	0.5%	0.0%	3,647%	PA
27	UNITED SOUTHWEST MORTGAG	67	51	31%	0.5%	0.4%	45%	CA
28	AMERICAN PACIFIC MORTGAG	66	66	0%	0.5%	0.5%	10%	CA
29	M & T BANK	53	105	-50%	0.4%	0.7%	-44%	NY
30	BANC OF CALIFORNIA NA	50	13	285%	0.4%	0.1%	324%	CA
31	SUN AMERICAN MORTGAGE CO	48	54	-11%	0.4%	0.4%	-2%	AZ
32	MONEY HOUSE INC	44	76	-42%	0.3%	0.5%	-36%	ZZ
33	WHOLESALE CAPITAL CORP	37	18	106%	0.3%	0.1%	127%	CA
34	FRANKLIN FIRST FINANCIAL	35	28	25%	0.3%	0.2%	38%	NY
35	TOWNEBANK	32	53	-40%	0.2%	0.4%	-33%	VA
36	BANK OF ENGLAND	32	28	14%	0.2%	0.2%	26%	CA
37	LAND-HOME FINANCIAL SERV	30	21	43%	0.2%	0.1%	57%	CA
38	FIRST PRIORITY FINANCIAL	30	15	100%	0.2%	0.1%	120%	CA
39	AMERICAN NATIONWIDE MORT	30	42	-29%	0.2%	0.3%	-21%	VA
40	MANN MORTGAGE LLC	29	13	123%	0.2%	0.1%	146%	ID
41	LENEX FINANCIAL MORTGAGE	29	18	61%	0.2%	0.1%	78%	CA
42	UNIVERSAL LENDING CORP	28	37	-24%	0.2%	0.3%	-17%	CO
43	VIP MORTGAGE INC	26	21	24%	0.2%	0.1%	36%	AZ
44	SUCCESS MORTGAGE PARTNER	25	33	-24%	0.2%	0.2%	-17%	MI
45	VANGUARD FUNDING LLC	25	28	-11%	0.2%	0.2%	-2%	NY
46	FIRSTAR BANK NA	25	38	-34%	0.2%	0.3%	-27%	OK
47	EVOLVE BANK & TRUST	25	17	47%	0.2%	0.1%	62%	NY
48	GATEWAY BANK MORTGAGE	24	17	41%	0.2%	0.1%	56%	NC
49	GMFS LLC	23	60	-62%	0.2%	0.4%	-58%	LA
50	COMMUNITY FIRST NATIONAL	23	0		0.2%	0.0%		FL

Rank	Lender	Vol 2016	Vol 2015	Chg %	Mkt Share 2016	Mkt Share 2015	Chg %	Top State
51	GEORGETOWN MORTGAGE	21	34	-38%	0.2%	0.2%	-32%	TX
52	MORTGAGE BROKERS SERVICE	21	0		0.2%	0.0%		WA
53	SOUTHERN TRUST MORTGAGE	20	32	-38%	0.2%	0.2%	-31%	DC
54	THE MONEY STORE	19	122	-84%	0.1%	0.9%	-83%	NY
55	YADKIN VALLEY BANK AND T	18	12	50%	0.1%	0.1%	65%	NC
56	BROKER SOLUTIONS INC	18	32	-44%	0.1%	0.2%	-38%	CA
57	HOMEOWNERS MORTGAGE ENTE	18	34	-47%	0.1%	0.2%	-42%	SC
58	ACADEMY MORTGAGE CORPORA	17	7	143%	0.1%	0.0%	168%	UT
59	UNIVERSAL AMERICAN MORTG	16	5	220%	0.1%	0.0%	253%	WA
60	WILLOW BEND MORTGAGE CO	16	1	1,500%	0.1%	0.0%	1,664%	TX
61	AMERICA'S MORTGAGE RESOU	15	2	650%	0.1%	0.0%	727%	LA
62	NEW AMERICAN MORTGAGE LL	15	13	15%	0.1%	0.1%	27%	NC
63	HOMEBRIDGE FINANCIAL SER	15	7	114%	0.1%	0.0%	136%	FL
64	RESIDENTIAL HOME FUNDING	15	22	-32%	0.1%	0.2%	-25%	NY
65	CITYWIDE HOME LOANS	15	6	150%	0.1%	0.0%	176%	UT
66	NOVA FINANCIAL & INVESTM	14	1	1,300%	0.1%	0.0%	1,443%	AZ
67	AKT AMERICAN CAPITAL INC	14	10	40%	0.1%	0.1%	54%	CA
68	PEOPLES HOME EQUITY INC	14	13	8%	0.1%	0.1%	19%	TN
69	BANK OF NORTH CAROLINA	13	13	0%	0.1%	0.1%	10%	NC
70	QUONTIC BANK FSB	13	2	550%	0.1%	0.0%	616%	NY
71	VAN DYK MORTGAGE CORPORA	13	17	-24%	0.1%	0.1%	-16%	KY
72	ADVANTAGE HOME MORTGAGE	12	6	100%	0.1%	0.0%	120%	GA
73	CARROLLTON MORTGAGE CO	12	8	50%	0.1%	0.1%	65%	CA
74	PACIFIC RESIDENTIAL MORT	12	14	-14%	0.1%	0.1%	-6%	OR
75	SIMONICH CORPORATION	12	18	-33%	0.1%	0.1%	-27%	CA
76	US MORTGAGE CORPORATION	12	18	-33%	0.1%	0.1%	-27%	NY
77	SENIOR MORTGAGE BANKERS	12	31	-61%	0.1%	0.2%	-57%	ZZ
78	TOTAL MEDIA MANAGEMENT L	12	1	1,100%	0.1%	0.0%	1,223%	AL
79	SECURITYNATIONAL MORTGAG	12	12	0%	0.1%	0.1%	10%	UT
80	MORTGAGESHOP LLC	12	21	-43%	0.1%	0.1%	-37%	VA
81	FLAHERTY FUNDING CORP	11	9	22%	0.1%	0.1%	35%	VA
82	NATIONS LENDING CORP	11	11	0%	0.1%	0.1%	10%	NJ
83	BANNER BANK	11	12	-8%	0.1%	0.1%	1%	WA
84	JAMES B NUTTER AND COMPA	11	12	-8%	0.1%	0.1%	1%	KS
85	AMCAP MORTGAGE LTD	11	7	57%	0.1%	0.0%	73%	TX
86	UNITED MORTGAGE CORP	11	11	0%	0.1%	0.1%	10%	NY
87	ON Q FINANCIAL INC	10	5	100%	0.1%	0.0%	120%	TX
88	ASPIRE FINANCIAL INC	10	20	-50%	0.1%	0.1%	-45%	TX
89	AMERICAN LIBERTY MORTGAG	10	7	43%	0.1%	0.0%	57%	CO
90	NORTHERN OHIO INVESTMENT	10	2	400%	0.1%	0.0%	451%	OH
91	AMERICA FIRST FEDERAL CR	10	22	-55%	0.1%	0.2%	-50%	UT
92	MOUNTAIN AMERICA CREDIT	10	21	-52%	0.1%	0.1%	-48%	UT
93	SIERRA PACIFIC MORTGAGE	10	11	-9%	0.1%	0.1%	0%	CA
94	FBC MORTGAGE LLC	10	1	900%	0.1%	0.0%	1,002%	FL
95	BEST CAPITAL FUNDING	10	9	11%	0.1%	0.1%	22%	CA
96	CIRCLE MORTGAGE CORPORAT	10	12	-17%	0.1%	0.1%	-8%	FL
97	LOANLEADERS OF AMERICA I	9	0		0.1%	0.0%		CA
98	FULTON BANK NA	9	22	-59%	0.1%	0.2%	-55%	PA
99	AMERICAN FINANCIAL NETWO	9	11	-18%	0.1%	0.1%	-10%	CA
100	BANK OF UTAH	9	4	125%	0.1%	0.0%	148%	UT

Paid Advertisement

Paid Advertisement

TARGET YOUR MARKETING

RMI Dashboard

Your Reverse Mortgage Lending Partner. Putting the pieces together... Together.

Expand Your Business. Satisfy Your Clients.

Approved GNMA Issuer.
Cherry Creek Mortgage Co., Inc. NMLS #3001 dba 1st Reverse Mortgage USA®.
All Rights Reserved. 3609 S. Wadsworth Blvd., Suite 500 Lakewood, CO 80235.

If you are looking for a new investor relationship and additional liquidity in the secondary markets for all reverse mortgage products, please contact 1st Reverse Mortgage USA® at (877) 217-0166 or www.1strmusa.com

Disclaimer: Although a significant effort is made to assure the accuracy and completeness of the information provided, Reverse Market Insight, Inc. makes no express or implied warranty as to the accuracy, adequacy, completeness, legality of the information. Reverse Market Insight, Inc. does not endorse any products or services advertised on this report. We also waive any liability of any loss or damage that may be incurred as a result of the use of such advertised products or services.