

HECM Lenders (FHA Approved Only)

Industry Overview

HECMs Endorsed through May 2016

Next Release Date: Week 1 of July

Endorsement Growth Change

-14.1 %

Competition Growth

-17.4 %

Active Lender Change

-42

Figures above reflect change from prior month

PERFORMANCE

Rank/Region	06/15	07/15	08/15	09/15	10/15	11/15	12/15	01/16	02/16	03/16	04/16	05/16	Trend
1 Pacific/Hawaii	1,195	1,083	2,090	1,427	1,045	911	1,135	1,090	1,321	1,292	1,118	1,045	▼
2 Southeast/Caribbean	1,056	1,081	932	902	864	897	898	758	841	899	822	757	▼
3 Southwest	684	540	473	410	456	539	483	420	567	460	501	402	▼
4 Mid-Atlantic	508	601	457	400	432	343	336	321	290	370	327	306	▼
5 Midwest	466	455	440	401	355	332	351	326	363	411	339	280	▼
6 New York/New Jersey	487	484	440	391	424	306	311	290	306	336	321	239	▼
7 Rocky Mountain	329	263	231	231	285	278	226	241	315	246	321	210	▼
8 Northwest/Alaska	215	206	395	243	182	174	230	190	279	275	223	211	▼
9 New England	205	232	194	175	190	128	164	163	182	157	158	125	▼
10 Great Plains	151	84	98	91	99	115	99	91	115	89	113	71	▼
Total	5,296	5,029	5,750	4,671	4,332	4,023	4,233	3,890	4,579	4,535	4,243	3,646	▼

Find out where the top five markets are in your area by state, county or even zip code to help improve sales performance, market share and maximize opportunities.

Call us for a free briefing at (682) 651-5632.

*Paid Advertisement

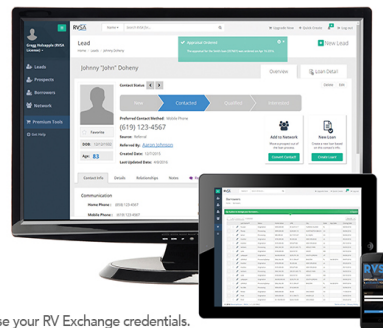
Loan Sales Tool of Tomorrow, Today.

RVSALES ACCELERATOR

Log In Today and Check out the Newest Features for Free!*



RVSA.REVERSEVISION.COM



*Use your RV Exchange credentials.

REVERSE MARKET
INSIGHT

(682) 651-5632
info@rminight.net
www.rminight.net

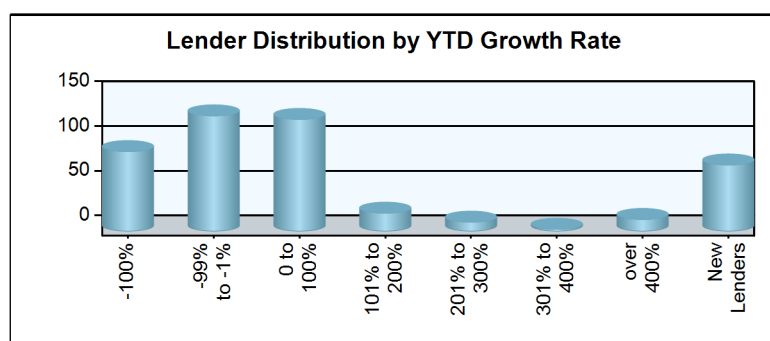
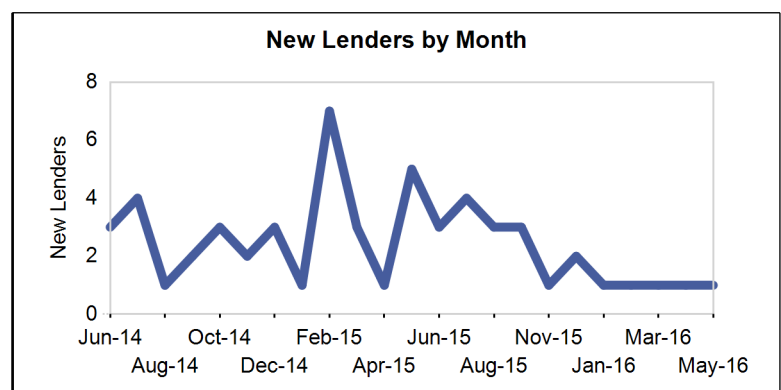
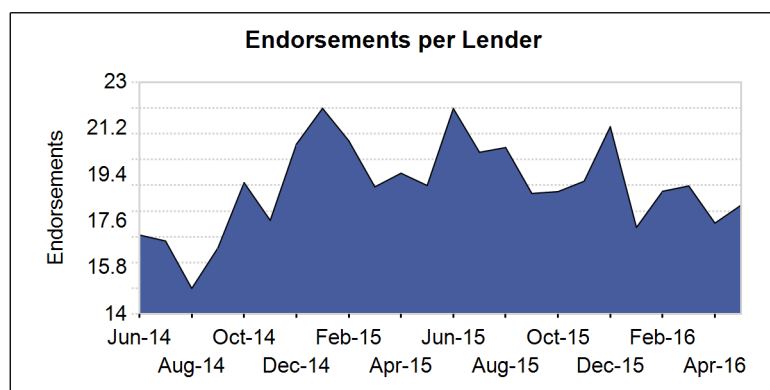
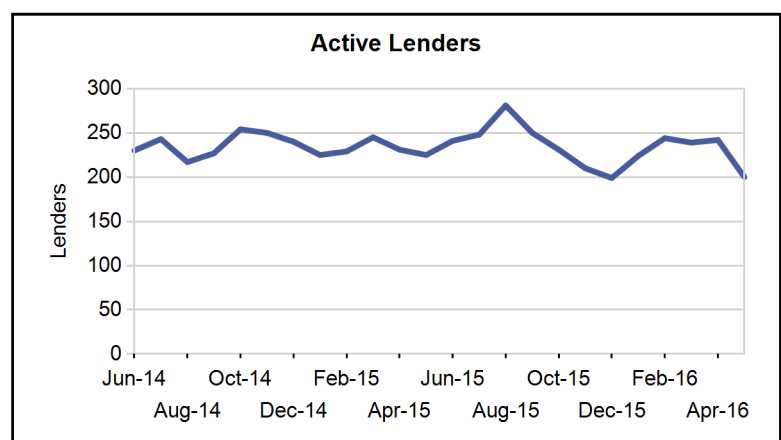
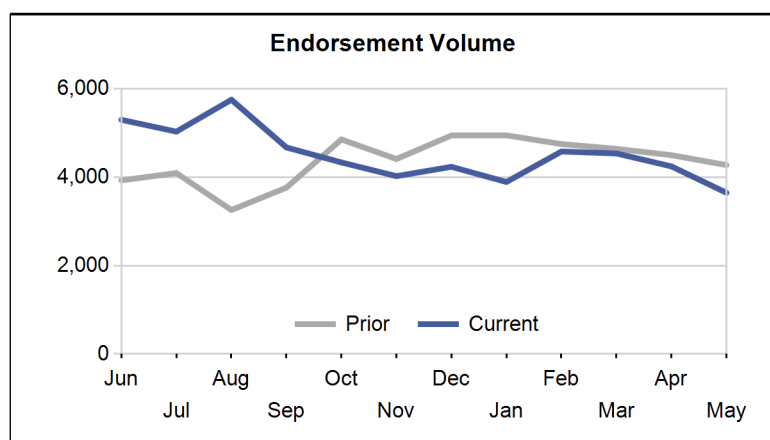
Interested in industry commentary, data and analysis? [CLICK HERE](#)

Subscribe to our [FREE ReverseIQ Newsletter](#) and [FREE Industry Reports](#)

Competition

Top 10 Lenders

Rank / Lender	06/15	07/15	08/15	09/15	10/15	11/15	12/15	01/16	02/16	03/16	04/16	05/16	Total	Trend
1 AMERICAN ADVISORS GROUP	1,201	1,256	1,220	1,239	1,092	1,022	1,028	826	917	999	966	796	12,562	▼
2 ONE REVERSE MORTGAGE LLC	534	333	393	353	317	358	351	287	330	322	316	316	4,210	▼
3 FINANCE OF AMERICA REVERSE LLC	326	478	495	315	322	302	326	323	368	286	270	330	4,141	▲
4 LIBERTY HOME EQUITY SOLUTIONS INC	433	370	570	401	340	143	78	291	490	338	446	225	4,125	▼
5 RMS/SECURITY ONE LENDING	343	389	474	265	282	320	413	356	406	351	162	67	3,828	▼
6 REVERSE MORTGAGE FUNDING LLC	200	251	236	175	197	192	207	163	190	227	262	275	2,575	▲
7 LIVE WELL FINANCIAL INC	218	177	208	131	132	203	172	150	130	270	184	164	2,139	▼
8 SYNERGY ONE LENDING INC	55	38	87	148	128	171	200	141	154	166	147	150	1,585	▲
9 HOME POINT FINANCIAL CORPORATION	149	88	88	122	115	71	99	110	88	87	89	66	1,172	▼
10 HIGH TECH LENDING INC	107	77	100	86	74	58	60	55	96	114	90	104	1,021	▲
Top 10 SubTotal	3,566	3,457	3,871	3,235	2,999	2,840	2,934	2,702	3,169	3,160	2,932	2,493	37,358	▼
Industry Total	5,296	5,029	5,750	4,671	4,332	4,023	4,233	3,890	4,579	4,535	4,243	3,646	54,227	▼



Paid Advertisement

Find Opportunity Faster

Market Performance

Market	YTD Volume 2016	YTD Volume 2015	Chg %	Active Lenders 2016	Active Lenders 2015	Chg %	Volume / Lender 2016	Volume / Lender 2015	Chg %
Great Plains									
KANSAS CITY	127	148	-14.2 %	21	22	-4.5 %	2.3	2.9	-20.6 %
ST. LOUIS	114	108	5.6 %	20	15	33.3 %	2.3	2.7	-16.0 %
DES MOINES	99	118	-16.1 %	16	13	23.1 %	2.8	3.3	-16.9 %
TOPEKA	76	87	-12.6 %	11	17	-35.3 %	2.5	2.0	22.2 %
OMAHA	63	81	-22.2 %	15	15	0.0 %	1.6	2.3	-31.7 %
Region Total	479	542	-11.6 %	39	36	8.3 %	4.3	5.2	-17.4 %
Mid-Atlantic									
PHILADELPHIA	434	647	-32.9 %	46	47	-2.1 %	3.8	4.9	-23.3 %
RICHMOND	361	561	-35.7 %	45	39	15.4 %	3.1	4.7	-34.2 %
WASH. D.C.	282	371	-24.0 %	33	36	-8.3 %	3.1	4.6	-33.0 %
BALTIMORE	244	362	-32.6 %	36	37	-2.7 %	2.8	3.8	-26.3 %
PITTSBURGH	136	196	-30.6 %	23	22	4.5 %	2.6	3.1	-18.3 %
CHARLESTON	79	86	-8.1 %	12	12	0.0 %	2.3	3.4	-31.6 %
WILMINGTON	78	89	-12.4 %	22	21	4.8 %	1.8	1.8	-0.1 %
Region Total	1,614	2,312	-30.2 %	86	86	0.0 %	6.8	9.3	-27.2 %
Midwest									
CHICAGO	401	487	-17.7 %	36	45	-20.0 %	4.3	4.4	-3.4 %
INDIANAPOLIS	254	298	-14.8 %	23	27	-14.8 %	3.5	4.1	-15.3 %
MINN. ST. PAUL	194	179	8.4 %	24	24	0.0 %	2.9	3.1	-7.0 %
MILWAUKEE	161	216	-25.5 %	27	29	-6.9 %	2.6	3.2	-17.3 %
CLEVELAND	152	246	-38.2 %	27	26	3.8 %	2.5	4.3	-42.5 %
DETROIT	134	159	-15.7 %	21	18	16.7 %	2.9	2.9	-3.0 %
GRAND RAPIDS	124	179	-30.7 %	19	17	11.8 %	2.7	3.8	-28.2 %
COLUMBUS	119	151	-21.2 %	22	21	4.8 %	2.6	2.9	-11.6 %
SPRINGFIELD	77	111	-30.6 %	14	16	-12.5 %	2.4	2.8	-15.2 %
CINCINNATI	72	79	-8.9 %	18	10	80.0 %	2.0	2.5	-22.6 %
FLINT	31	49	-36.7 %	9	12	-25.0 %	1.9	1.8	7.9 %
Region Total	1,719	2,154	-20.2 %	80	88	-9.1 %	7.7	8.9	-13.9 %
New England									
BOSTON	342	358	-4.5 %	28	30	-6.7 %	4.6	4.9	-4.6 %
HARTFORD	191	263	-27.4 %	30	30	0.0 %	2.7	3.6	-25.5 %
BANGOR	100	81	23.5 %	19	15	26.7 %	2.1	2.4	-11.3 %
MANCHESTER	77	90	-14.4 %	19	16	18.8 %	1.8	2.1	-15.0 %
PROVIDENCE	43	56	-23.2 %	10	15	-33.3 %	2.1	1.6	27.7 %
BURLINGTON	32	47	-31.9 %	9	8	12.5 %	1.7	2.4	-28.4 %
Region Total	785	895	-12.3 %	58	50	16.0 %	5.2	6.2	-16.4 %
New York/New Jersey									
NEW YORK	729	1,040	-29.9 %	51	55	-7.3 %	4.9	6.5	-25.0 %
NEWARK	313	424	-26.2 %	49	54	-9.3 %	2.7	3.5	-22.2 %
CAMDEN	228	319	-28.5 %	46	44	4.5 %	2.6	3.0	-14.5 %
ALBANY	137	251	-45.4 %	23	32	-28.1 %	2.3	2.9	-18.9 %
BUFFALO	85	151	-43.7 %	11	17	-35.3 %	2.9	3.5	-17.5 %
Region Total	1,492	2,185	-31.7 %	91	99	-8.1 %	5.8	8.0	-27.0 %
Northwest/Alaska									
SEATTLE	507	390	30.0 %	48	45	6.7 %	3.5	3.3	6.5 %
PORTLAND	423	319	32.6 %	53	41	29.3 %	3.0	3.1	-4.8 %
BOISE	161	147	9.5 %	32	22	45.5 %	2.3	2.8	-19.6 %
SPOKANE	70	80	-12.5 %	21	22	-4.5 %	1.5	1.8	-16.5 %
ANCHORAGE	17	24	-29.2 %	5	6	-16.7 %	1.7	1.6	8.3 %
Region Total	1,178	960	22.7 %	75	67	11.9 %	5.0	5.2	-4.5 %
Pacific/Hawaii									
LOS ANGELES	1,330	1,289	3.2 %	82	70	17.1 %	6.3	6.9	-9.5 %

Market	YTD Volume 2016	YTD Volume 2015	Chg %	Active Lenders 2016	Active Lenders 2015	Chg %	Volume / Lender 2016	Volume / Lender 2015	Chg %
SANTA ANA	1,073	1,058	1.4 %	78	69	13.0 %	5.3	6.1	-12.4 %
SAN FRANCISCO	973	954	2.0 %	57	55	3.6 %	6.1	6.1	-0.8 %
PHOENIX	653	621	5.2 %	51	46	10.9 %	4.4	5.1	-15.1 %
SACRAMENTO	585	423	38.3 %	48	41	17.1 %	4.4	3.7	20.0 %
SAN DIEGO	475	416	14.2 %	51	48	6.3 %	3.8	3.8	-0.4 %
FRESNO	266	217	22.6 %	31	36	-13.9 %	3.1	2.6	19.7 %
LAS VEGAS	207	239	-13.4 %	30	23	30.4 %	3.3	4.2	-22.3 %
RENO	125	87	43.7 %	18	16	12.5 %	2.5	2.3	7.2 %
TUCSON	97	115	-15.7 %	21	15	40.0 %	2.1	2.7	-22.8 %
HONOLULU	82	75	9.3 %	15	17	-11.8 %	1.9	1.7	9.0 %
Region Total	5,866	5,494	6.8 %	145	137	5.8 %	13.6	14.4	-5.7 %
Rocky Mountain									
DENVER	765	526	45.4 %	53	46	15.2 %	4.9	4.4	12.7 %
SALT LAKE CITY	380	379	0.3 %	29	30	-3.3 %	4.0	4.0	1.4 %
HELENA	99	90	10.0 %	16	15	6.7 %	2.4	2.6	-6.8 %
CASPER	42	41	2.4 %	14	12	16.7 %	1.7	1.5	12.9 %
FARGO	25	16	56.3 %	7	4	75.0 %	2.0	1.4	44.0 %
SIOUX FALLS	22	24	-8.3 %	9	5	80.0 %	1.3	1.7	-24.6 %
Region Total	1,333	1,076	23.9 %	72	72	0.0 %	6.0	5.8	2.9 %
Southeast/Caribbean									
MIAMI	703	804	-12.6 %	62	69	-10.1 %	4.4	4.6	-4.6 %
GREENSBORO	505	602	-16.1 %	46	32	43.8 %	4.2	6.5	-35.6 %
ATLANTA	425	505	-15.8 %	40	32	25.0 %	4.1	6.0	-31.1 %
TAMPA	396	481	-17.7 %	45	46	-2.2 %	3.7	4.4	-15.4 %
COLUMBIA	364	421	-13.5 %	38	28	35.7 %	3.4	4.2	-20.3 %
ORLANDO	343	384	-10.7 %	40	45	-11.1 %	3.3	3.6	-7.4 %
JACKSONVILLE	292	330	-11.5 %	29	28	3.6 %	3.7	4.1	-9.4 %
BIRMINGHAM	255	310	-17.7 %	23	25	-8.0 %	3.7	4.3	-13.1 %
KNOXVILLE	202	241	-16.2 %	22	23	-4.3 %	3.4	3.6	-6.1 %
LOUISVILLE	143	193	-25.9 %	19	19	0.0 %	2.9	3.8	-24.5 %
NASHVILLE	136	165	-17.6 %	24	22	9.1 %	2.3	3.2	-26.6 %
CARIBBEAN	134	179	-25.1 %	16	13	23.1 %	3.3	4.8	-30.7 %
JACKSON	119	167	-28.7 %	15	11	36.4 %	2.9	4.5	-36.9 %
MEMPHIS	60	79	-24.1 %	10	14	-28.6 %	2.4	2.4	-1.5 %
Region Total	4,077	4,861	-16.1 %	120	135	-11.1 %	11.5	13.0	-12.0 %
Southwest									
HOUSTON	453	477	-5.0 %	45	45	0.0 %	3.8	4.6	-16.7 %
SAN ANTONIO	377	402	-6.2 %	38	37	2.7 %	3.7	4.0	-5.6 %
DALLAS	328	332	-1.2 %	37	37	0.0 %	3.2	3.6	-10.3 %
FT. WORTH	306	315	-2.9 %	37	35	5.7 %	3.2	3.3	-3.8 %
NEW ORLEANS	244	291	-16.2 %	23	24	-4.2 %	4.1	4.3	-5.9 %
LITTLE ROCK	141	150	-6.0 %	23	16	43.8 %	2.8	3.6	-22.2 %
ALBUQUERQUE	137	161	-14.9 %	18	27	-33.3 %	2.8	3.0	-8.9 %
OKLAHOMA CITY	110	141	-22.0 %	19	18	5.6 %	3.0	3.1	-2.2 %
LUBBOCK	109	155	-29.7 %	21	20	5.0 %	2.1	2.9	-27.2 %
TULSA	105	126	-16.7 %	18	14	28.6 %	2.2	3.1	-31.4 %
SHREVEPORT	40	74	-45.9 %	11	10	10.0 %	1.5	2.2	-28.2 %
Region Total	2,350	2,624	-10.4 %	79	85	-7.1 %	9.6	10.9	-12.1 %
Grand Total	20,893	23,103	-9.6 %	373	388	-3.9 %	18.2	20.0	-9.2 %

Analyze your top competitors and leverage the competitive strategies that work for them. Call us for a free, no obligation, Competitive Landscape Report at (682) 651-5632.

Top 100 Lenders - Year to Date

Rank	Lender	Vol 2016	Vol 2015	Chg %	Mkt Share 2016	Mkt Share 2015	Chg %	Top State
1	AMERICAN ADVISORS GROUP	4504	5594	-19%	21.6%	24.2%	-11%	CA
2	LIBERTY HOME EQUITY SOLU	1790	1540	16%	8.6%	6.7%	29%	CA
3	FINANCE OF AMERICA REVER	1577	1724	-9%	7.5%	7.5%	1%	CA
4	ONE REVERSE MORTGAGE LLC	1571	2406	-35%	7.5%	10.4%	-28%	CA
5	RMS/SECURITY ONE LENDING	1342	2066	-35%	6.4%	8.9%	-28%	CA
6	REVERSE MORTGAGE FUNDING	1117	922	21%	5.3%	4.0%	34%	CA
7	LIVE WELL FINANCIAL INC	898	729	23%	4.3%	3.2%	36%	CA
8	SYNERGY ONE LENDING INC	758	1	75,700%	3.6%	0.0%	83,718%	CA
9	HIGH TECH LENDING INC	459	285	61%	2.2%	1.2%	78%	CA
10	NATIONWIDE EQUITIES CORP	449	185	143%	2.1%	0.8%	168%	NY
11	HOME POINT FINANCIAL COR	440	507	-13%	2.1%	2.2%	-4%	CA
12	OPEN MORTGAGE LLC	253	297	-15%	1.2%	1.3%	-6%	CA
13	FIRSTBANK	247	189	31%	1.2%	0.8%	45%	FL
14	THE FEDERAL SAVINGS BANK	184	143	29%	0.9%	0.6%	42%	CA
15	REVERSE MORTGAGESCOM INC	182	0		0.9%	0.0%		FL
16	ADVISORS MORTGAGE GROUP	182	164	11%	0.9%	0.7%	23%	CA
17	UNITED NORTHERN MORTGAGE	178	379	-53%	0.9%	1.6%	-48%	NY
18	CHERRY CREEK MORTGAGE CO	169	234	-28%	0.8%	1.0%	-20%	UT
19	PLAZA HOME MORTGAGE INC	162	227	-29%	0.8%	1.0%	-21%	CA
20	FAIRWAY INDEPENDENT MORT	162	18	800%	0.8%	0.1%	895%	WI
21	SUN WEST MORTGAGE CO INC	157	223	-30%	0.8%	1.0%	-22%	CA
22	PROFICIO MORTGAGE VENTUR	129	566	-77%	0.6%	2.4%	-75%	FL
23	PEOPLES BANK	125	96	30%	0.6%	0.4%	44%	CA
24	RESOLUTE BANK	124	0		0.6%	0.0%		CA
25	MCM HOLDINGS INC	110	122	-10%	0.5%	0.5%	0%	FL
26	AMERICAN PACIFIC MORTGAG	110	99	11%	0.5%	0.4%	23%	CA
27	UNITED SOUTHWEST MORTGAG	102	105	-3%	0.5%	0.5%	7%	CA
28	LONGBRIDGE FINANCIAL LLC	98	13	654%	0.5%	0.1%	734%	TX
29	BANC OF CALIFORNIA NA	94	24	292%	0.4%	0.1%	333%	CA
30	M & T BANK	92	165	-44%	0.4%	0.7%	-38%	NY
31	SUN AMERICAN MORTGAGE CO	77	97	-21%	0.4%	0.4%	-12%	AZ
32	MONEY HOUSE INC	69	94	-27%	0.3%	0.4%	-19%	ZZ
33	BANK OF ENGLAND	66	38	74%	0.3%	0.2%	92%	FL
34	TOWNEBANK	62	80	-23%	0.3%	0.3%	-14%	VA
35	LAND-HOME FINANCIAL SERV	55	38	45%	0.3%	0.2%	60%	CA
36	AMERICAN NATIONWIDE MORT	54	69	-22%	0.3%	0.3%	-13%	TX
37	VIP MORTGAGE INC	51	35	46%	0.2%	0.2%	61%	AZ
38	FRANKLIN FIRST FINANCIAL	49	44	11%	0.2%	0.2%	23%	NY
39	MANN MORTGAGE LLC	46	28	64%	0.2%	0.1%	82%	ID
40	WHOLESALE CAPITAL CORP	41	21	95%	0.2%	0.1%	116%	CA
41	SUCCESS MORTGAGE PARTNER	41	60	-32%	0.2%	0.3%	-24%	MI
42	UNIVERSAL LENDING CORPOR	38	52	-27%	0.2%	0.2%	-19%	CO
43	VANGUARD FUNDING LLC	37	38	-3%	0.2%	0.2%	8%	NY
44	FIRST PRIORITY FINANCIAL	37	23	61%	0.2%	0.1%	78%	CA
45	FIRSTAR BANK NA	36	63	-43%	0.2%	0.3%	-37%	OK
46	LENOX FINANCIAL MORTGAGE	36	30	20%	0.2%	0.1%	33%	CA
47	GEORGETOWN MORTGAGE	36	62	-42%	0.2%	0.3%	-36%	TX
48	COMMUNITY FIRST NATIONAL	35	0		0.2%	0.0%		FL
49	BROKER SOLUTIONS INC	35	52	-33%	0.2%	0.2%	-26%	CA
50	WILLOW BEND MORTGAGE CO	33	4	725%	0.2%	0.0%	812%	TX

Rank	Lender	Vol 2016	Vol 2015	Chg %	Mkt Share 2016	Mkt Share 2015	Chg %	Top State
51	EVOLVE BANK & TRUST	33	31	6%	0.2%	0.1%	18%	NY
52	SOUTHERN TRUST MORTGAGE	32	48	-33%	0.2%	0.2%	-26%	DC
53	GMFS LLC	30	121	-75%	0.1%	0.5%	-73%	LA
54	GATEWAY BANK MORTGAGE	30	28	7%	0.1%	0.1%	18%	NC
55	VAN DYK MORTGAGE CORPORA	29	30	-3%	0.1%	0.1%	7%	KY
56	YADKIN VALLEY BANK AND T	28	26	8%	0.1%	0.1%	19%	NC
57	RESIDENTIAL HOME FUNDING	28	38	-26%	0.1%	0.2%	-19%	NY
58	HOMEOWNERS MORTGAGE ENTE	28	61	-54%	0.1%	0.3%	-49%	SC
59	HOMEBRIDGE FINANCIAL SER	28	11	155%	0.1%	0.0%	181%	NJ
60	ACADEMY MORTGAGE CORPORA	27	16	69%	0.1%	0.1%	87%	UT
61	MORTGAGESHOP LLC	27	49	-45%	0.1%	0.2%	-39%	VA
62	MORTGAGE BROKERS SERVICE	26	4	550%	0.1%	0.0%	619%	WA
63	THE MONEY STORE	25	148	-83%	0.1%	0.6%	-81%	NY
64	TOTAL MEDIA MANAGEMENT L	25	6	317%	0.1%	0.0%	361%	AL
65	PEOPLES HOME EQUITY INC	24	23	4%	0.1%	0.1%	15%	TN
66	NOVA FINANCIAL & INVESTM	23	1	2,200%	0.1%	0.0%	2,443%	AZ
67	PACIFIC RESIDENTIAL MORT	23	31	-26%	0.1%	0.1%	-18%	OR
68	CARROLLTON MORTGAGE CO	22	12	83%	0.1%	0.1%	103%	CA
69	BANK OF NORTH CAROLINA	22	23	-4%	0.1%	0.1%	6%	NC
70	QUONTIC BANK FSB	22	9	144%	0.1%	0.0%	170%	NY
71	AKT AMERICAN CAPITAL INC	22	13	69%	0.1%	0.1%	87%	CA
72	NEW AMERICAN MORTGAGE LL	22	20	10%	0.1%	0.1%	22%	NC
73	AMERICA'S MORTGAGE RESOU	21	9	133%	0.1%	0.0%	158%	LA
74	GUILD MORTGAGE COMPANY	21	1	2,000%	0.1%	0.0%	2,222%	CA
75	CITYWIDE HOME LOANS	19	10	90%	0.1%	0.0%	110%	UT
76	GATEWAY FUNDING DIVERSIF	19	26	-27%	0.1%	0.1%	-19%	NJ
77	UNIVERSAL AMERICAN MORTG	19	7	171%	0.1%	0.0%	200%	WA
78	FULTON BANK NA	18	34	-47%	0.1%	0.1%	-41%	PA
79	CMG MORTGAGE INC	18	13	38%	0.1%	0.1%	53%	CA
80	UNITED MORTGAGE CORP	18	15	20%	0.1%	0.1%	33%	NY
81	AMCAP MORTGAGE LTD	17	11	55%	0.1%	0.0%	71%	TX
82	SECURITYNATIONAL MORTGAG	17	23	-26%	0.1%	0.1%	-18%	UT
83	US MORTGAGE CORPORATION	17	28	-39%	0.1%	0.1%	-33%	NY
84	FLAHERTY FUNDING CORP	17	16	6%	0.1%	0.1%	17%	VA
85	MOUNTAIN AMERICA CREDIT	17	27	-37%	0.1%	0.1%	-30%	UT
86	AMERICA FIRST FEDERAL CR	16	36	-56%	0.1%	0.2%	-51%	UT
87	FBC MORTGAGE LLC	16	2	700%	0.1%	0.0%	785%	FL
88	BEST CAPITAL FUNDING	16	11	45%	0.1%	0.0%	61%	CA
89	SENIOR MORTGAGE BANKERS	16	43	-63%	0.1%	0.2%	-59%	ZZ
90	SIMONICH CORPORATION	16	23	-30%	0.1%	0.1%	-23%	CA
91	ON Q FINANCIAL INC	15	11	36%	0.1%	0.0%	51%	AZ
92	BERKSHIRE BANK	15	22	-32%	0.1%	0.1%	-25%	MA
93	BANNER BANK	15	19	-21%	0.1%	0.1%	-13%	WA
94	SUMMIT FUNDING INC	15	12	25%	0.1%	0.1%	38%	CA
95	JAMES B NUTTER AND COMPA	14	19	-26%	0.1%	0.1%	-19%	KS
96	ASPIRE FINANCIAL INC	14	27	-48%	0.1%	0.1%	-43%	TX
97	EASTERN BANK	14	26	-46%	0.1%	0.1%	-40%	MA
98	AMERICAN LIBERTY MORTGAG	14	10	40%	0.1%	0.0%	55%	CO
99	COMMONFUND MORTGAGE CORP	14	8	75%	0.1%	0.0%	94%	NY
100	SALEM FIVE MORTGAGE CO L	14	15	-7%	0.1%	0.1%	3%	MA

Paid Advertisement

Paid Advertisement

TARGET YOUR MARKETING

RMI Dashboard

Lender	Vol YTD	Chg	Mkt Shr	Mkt Shr Chg
4234	4	100.0%	0%	-100.0%
4236	4	300.0%	50%	-100.0%
4902	3	300.0%	50%	-100.0%
4610	3	200.0%	25%	-100.0%
4203	3	50.0%	10%	-100.0%
4219	3	50.0%	10%	-100.0%
4220	3	100.0%	20%	-100.0%
4607	2	100.0%	20%	-100.0%
4008	2	100.0%	20%	-100.0%
4611	2	100.0%	20%	-100.0%
4608	2	100.0%	20%	-100.0%

1st REVERSE MORTGAGE USA
DIVISION OF CHERRY CREEK MORTGAGE CO., INC.

Your Reverse Mortgage Lending Partner. Putting the pieces together... Together.

Expand Your Business. Satisfy Your Clients.

Approved GNMA Issuer.
Cherry Creek Mortgage Co., Inc. NMLS #3001 dba 1st Reverse Mortgage USA®.
All Rights Reserved. 3609 S. Wadsworth Blvd., Suite 500 Lakewood, CO 80235.

If you are looking for a new investor relationship and additional liquidity in the secondary markets for all reverse mortgage products, please contact 1st Reverse Mortgage USA® at (877) 217-0166 or www.1strmusa.com

Disclaimer: Although a significant effort is made to assure the accuracy and completeness of the information provided, Reverse Market Insight, Inc. makes no express or implied warranty as to the accuracy, adequacy, completeness, legality of the information. Reverse Market Insight, Inc. does not endorse any products or services advertised on this report. We also waive any liability of any loss or damage that may be incurred as a result of the use of such advertised products or services.