

HECM Lenders (FHA Approved Only)

Industry Overview

HECMs Endorsed through March 2018

Next Release Date: Week 1 of May

Endorsement Growth Change

-17.3 %

Competition Growth

-6.8 %

Active Lender Change

-15

Figures above reflect change from prior month

PERFORMANCE

Rank/Region	04/17	05/17	06/17	07/17	08/17	09/17	10/17	11/17	12/17	01/18	02/18	03/18	Trend
1 Pacific/Hawaii	1,514	1,408	1,521	1,300	1,405	1,357	1,322	1,322	1,311	2,047	1,657	1,204	▼
2 Southeast/Caribbean	926	914	890	846	921	760	731	857	879	1,096	861	763	▼
3 Southwest	486	524	501	390	549	534	484	547	526	576	475	477	▲
4 Rocky Mountain	398	400	393	359	426	430	448	529	447	570	473	365	▼
5 Northwest/Alaska	361	341	335	269	325	326	352	334	328	613	442	328	▼
6 Midwest	370	353	336	261	364	336	322	348	351	405	387	322	▼
7 Mid-Atlantic	382	362	352	327	371	320	367	325	343	378	320	306	▼
8 New York/New Jersey	300	287	283	272	326	303	247	248	299	309	322	276	▼
9 New England	186	170	149	143	152	126	139	171	167	215	163	157	▼
10 Great Plains	113	95	77	87	88	100	85	101	114	104	101	102	▲
Total	5,036	4,854	4,837	4,254	4,927	4,592	4,497	4,782	4,765	6,313	5,201	4,300	▼

Find out where the top five markets are in your area by state, county or even zip code to help improve sales performance, market share and maximize opportunities.

Call us for a free briefing at (682) 651-5632.



REVERSE MARKET
INSIGHT

(682) 651-5632

info@rminsight.net

www.rminsight.net

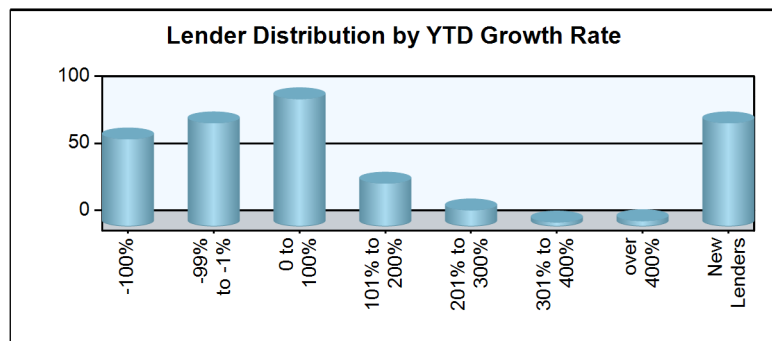
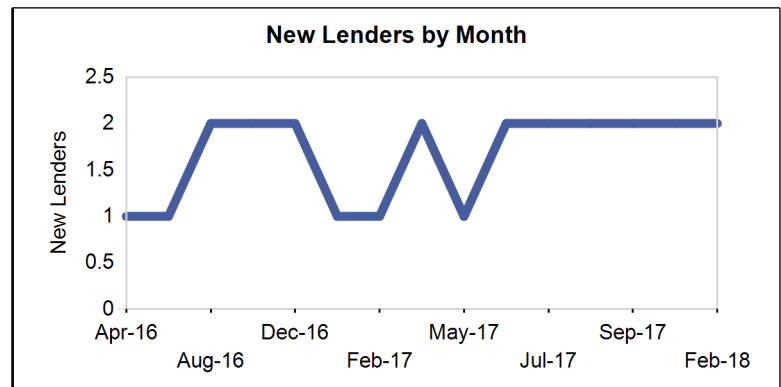
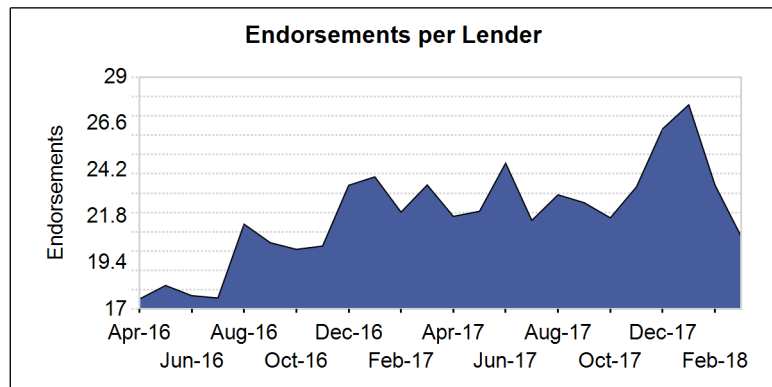
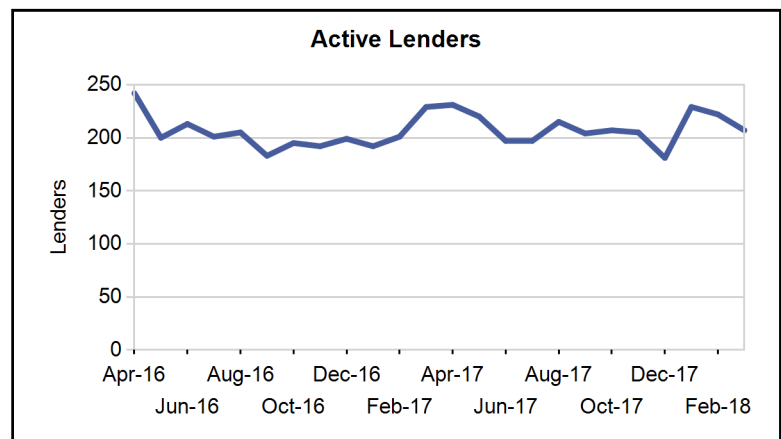
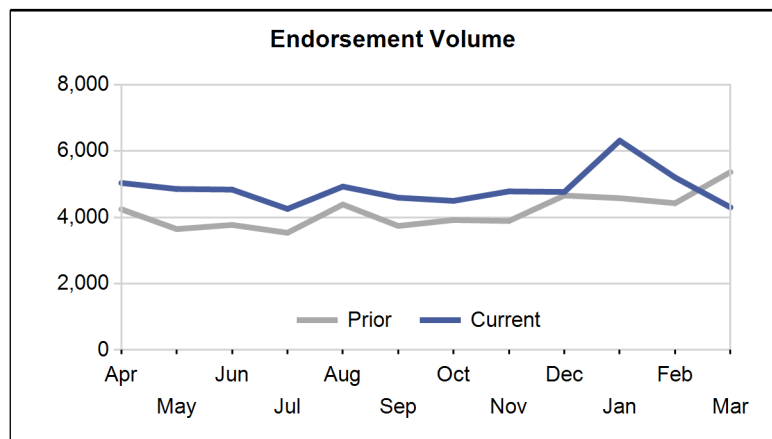
Interested in industry commentary, data and analysis? [CLICK HERE](#)

Subscribe to our [FREE ReverseIQ Newsletter](#) and [FREE Industry Reports](#)

Competition

Top 10 Lenders

Rank / Lender	04/17	05/17	06/17	07/17	08/17	09/17	10/17	11/17	12/17	01/18	02/18	03/18	Total	Trend
1 AMERICAN ADVISORS GROUP	993	1,028	1,126	986	1,123	1,072	983	1,132	1,141	1,218	1,183	1,158	13,143	▼
2 FINANCE OF AMERICA REVERSE LLC	439	348	532	504	601	496	509	425	435	636	559	390	5,874	▼
3 REVERSE MORTGAGE FUNDING LLC	364	380	407	361	399	359	358	399	457	591	310	285	4,670	▼
4 LIBERTY HOME EQUITY SOLUTIONS INC	462	299	227	211	269	209	266	230	192	576	498	353	3,792	▼
5 SYNERGY ONE LENDING INC	229	246	332	259	300	280	285	350	340	357	201	168	3,347	▼
6 ONE REVERSE MORTGAGE LLC	261	266	207	196	313	282	251	277	265	296	253	261	3,128	▲
7 LIVE WELL FINANCIAL INC	133	172	131	120	157	216	179	197	183	200	124	167	1,979	▲
8 HIGHTECHLENDING INC	122	112	109	89	119	85	108	112	79	104	190	128	1,357	▼
9 NATIONWIDE EQUITIES CORPORATION	96	115	140	99	108	99	84	90	75	132	47	63	1,148	▲
10 REVERSE MORTGAGESCOM INC	95	89	95	77	93	66	59	95	89	54	92	67	971	▼
Top 10 SubTotal	3,194	3,055	3,306	2,902	3,482	3,164	3,082	3,307	3,256	4,164	3,457	3,040	39,409	▼
Industry Total	5,036	4,854	4,837	4,254	4,927	4,592	4,497	4,782	4,765	6,313	5,201	4,300	58,358	▼



Paid Advertisement

Find Opportunity Faster

RMI Dashboard

Market Performance

Market	YTD Volume 2018	YTD Volume 2017	Chg %	Active Lenders 2018	Active Lenders 2017	Chg %	Volume / Lender 2018	Volume / Lender 2017	Chg %
Great Plains									
KANSAS CITY	102	104	-1.9 %	22	21	4.8 %	2.5	2.9	-13.8 %
ST. LOUIS	80	68	17.6 %	17	18	-5.6 %	2.9	2.3	28.5 %
DES MOINES	49	55	-10.9 %	13	13	0.0 %	1.9	2.3	-16.7 %
TOPEKA	43	46	-6.5 %	14	14	0.0 %	2.4	2.1	16.8 %
OMAHA	33	39	-15.4 %	6	11	-45.5 %	2.8	1.9	41.4 %
Region Total	307	312	-1.6 %	34	35	-2.9 %	4.0	4.5	-11.0 %
Mid-Atlantic									
PHILADELPHIA	305	259	17.8 %	40	42	-4.8 %	4.0	3.4	15.7 %
RICHMOND	237	226	4.9 %	33	34	-2.9 %	3.5	3.4	4.1 %
WASH. D.C.	149	177	-15.8 %	24	31	-22.6 %	3.0	3.2	-5.9 %
BALTIMORE	139	157	-11.5 %	23	27	-14.8 %	3.1	3.0	0.8 %
PITTSBURGH	98	107	-8.4 %	24	21	14.3 %	2.6	2.8	-8.5 %
WILMINGTON	46	48	-4.2 %	15	14	7.1 %	2.5	2.2	15.9 %
CHARLESTON	30	46	-34.8 %	10	9	11.1 %	2.2	2.8	-20.3 %
Region Total	1,004	1,020	-1.6 %	74	74	0.0 %	6.8	7.1	-3.3 %
Midwest									
CHICAGO	232	216	7.4 %	32	33	-3.0 %	4.1	3.7	9.3 %
MINN. ST. PAUL	139	123	13.0 %	24	27	-11.1 %	3.0	2.5	18.2 %
INDIANAPOLIS	134	142	-5.6 %	19	19	0.0 %	3.4	3.5	-2.9 %
MILWAUKEE	123	119	3.4 %	24	22	9.1 %	3.0	3.4	-13.9 %
DETROIT	106	98	8.2 %	21	18	16.7 %	2.9	3.2	-11.8 %
CLEVELAND	98	104	-5.8 %	21	17	23.5 %	2.8	3.1	-8.8 %
COLUMBUS	89	102	-12.7 %	15	18	-16.7 %	3.3	3.1	6.0 %
GRAND RAPIDS	85	82	3.7 %	14	18	-22.2 %	3.3	2.4	40.5 %
SPRINGFIELD	46	51	-9.8 %	11	13	-15.4 %	2.7	2.7	2.8 %
CINCINNATI	39	46	-15.2 %	15	14	7.1 %	1.9	2.1	-11.0 %
FLINT	23	24	-4.2 %	6	10	-40.0 %	2.4	1.7	40.5 %
Region Total	1,114	1,107	0.6 %	72	71	1.4 %	8.2	8.7	-6.0 %
New England									
BOSTON	254	219	16.0 %	25	21	19.0 %	5.1	5.1	-0.1 %
HARTFORD	134	109	22.9 %	22	22	0.0 %	3.3	2.6	29.7 %
BANGOR	64	44	45.5 %	15	10	50.0 %	2.4	2.3	3.4 %
MANCHESTER	34	44	-22.7 %	13	16	-18.8 %	1.7	1.9	-11.1 %
PROVIDENCE	30	21	42.9 %	10	10	0.0 %	1.9	1.5	24.5 %
BURLINGTON	19	26	-26.9 %	6	9	-33.3 %	1.6	1.5	6.7 %
Region Total	535	463	15.6 %	42	42	0.0 %	6.6	5.7	15.1 %
New York/New Jersey									
NEW YORK	424	458	-7.4 %	33	44	-25.0 %	5.1	4.9	2.2 %
NEWARK	180	185	-2.7 %	34	37	-8.1 %	2.7	2.8	-3.0 %
CAMDEN	149	125	19.2 %	37	34	8.8 %	2.6	2.3	12.1 %
ALBANY	97	99	-2.0 %	17	25	-32.0 %	3.1	2.4	26.8 %
BUFFALO	57	54	5.6 %	9	9	0.0 %	3.1	3.9	-20.5 %
Region Total	907	921	-1.5 %	66	75	-12.0 %	6.3	6.0	3.7 %
Northwest/Alaska									
SEATTLE	685	441	55.3 %	51	45	13.3 %	6.3	4.8	30.9 %
PORTLAND	462	318	45.3 %	47	40	17.5 %	4.7	3.8	23.6 %
BOISE	143	102	40.2 %	31	27	14.8 %	2.5	2.1	17.9 %
SPOKANE	75	59	27.1 %	21	20	5.0 %	2.1	1.8	17.0 %
ANCHORAGE	18	6	200.0 %	6	3	100.0 %	1.8	1.5	18.5 %
Region Total	1,383	926	49.4 %	74	61	21.3 %	8.4	6.9	20.9 %
Pacific/Hawaii									
LOS ANGELES	1,078	934	15.4 %	67	71	-5.6 %	8.5	6.5	30.3 %

Market	YTD Volume 2018	YTD Volume 2017	Chg %	Active Lenders 2018	Active Lenders 2017	Chg %	Volume / Lender 2018	Volume / Lender 2017	Chg %
SANTA ANA	894	781	14.5 %	72	59	22.0 %	6.7	6.8	-2.7 %
SAN FRANCISCO	733	739	-0.8 %	52	48	8.3 %	7.0	6.9	0.7 %
SACRAMENTO	568	416	36.5 %	45	43	4.7 %	6.6	4.5	46.1 %
PHOENIX	540	474	13.9 %	56	46	21.7 %	4.9	4.8	2.1 %
SAN DIEGO	467	372	25.5 %	45	44	2.3 %	5.3	4.4	20.5 %
FRESNO	194	155	25.2 %	33	39	-15.4 %	3.3	2.4	33.6 %
LAS VEGAS	170	169	0.6 %	33	26	26.9 %	2.9	3.4	-16.4 %
RENO	105	79	32.9 %	23	18	27.8 %	2.6	2.2	15.2 %
TUCSON	80	56	42.9 %	19	13	46.2 %	2.3	2.2	2.7 %
HONOLULU	79	50	58.0 %	14	13	7.7 %	2.6	1.9	36.8 %
Region Total	4,908	4,225	16.2 %	129	113	14.2 %	17.9	17.1	4.7 %
Rocky Mountain									
DENVER	896	805	11.3 %	62	55	12.7 %	6.6	6.2	7.0 %
SALT LAKE CITY	369	257	43.6 %	41	32	28.1 %	4.4	4.2	5.2 %
HELENA	75	76	-1.3 %	14	17	-17.6 %	2.5	2.6	-1.5 %
CASPER	37	25	48.0 %	12	8	50.0 %	2.0	2.0	3.5 %
SIOUX FALLS	17	13	30.8 %	8	3	166.7 %	1.7	1.7	-3.7 %
FARGO	14	16	-12.5 %	9	6	50.0 %	1.1	2.3	-54.3 %
Region Total	1,408	1,192	18.1 %	82	70	17.1 %	8.0	7.3	9.7 %
Southeast/Caribbean									
MIAMI	507	471	7.6 %	53	54	-1.9 %	5.1	4.6	10.6 %
GREENSBORO	346	342	1.2 %	40	34	17.6 %	4.1	4.9	-16.3 %
TAMPA	340	304	11.8 %	40	41	-2.4 %	4.1	4.2	-2.5 %
ORLANDO	309	291	6.2 %	42	44	-4.5 %	4.0	3.6	10.8 %
ATLANTA	264	239	10.5 %	27	38	-28.9 %	4.8	3.6	34.0 %
COLUMBIA	214	209	2.4 %	36	32	12.5 %	3.2	3.1	3.7 %
JACKSONVILLE	178	173	2.9 %	31	29	6.9 %	3.4	3.1	9.5 %
BIRMINGHAM	143	182	-21.4 %	20	23	-13.0 %	3.5	3.9	-11.4 %
KNOXVILLE	128	118	8.5 %	19	19	0.0 %	3.6	3.6	1.0 %
NASHVILLE	111	86	29.1 %	20	17	17.6 %	2.8	2.6	6.8 %
LOUISVILLE	71	77	-7.8 %	15	12	25.0 %	3.2	3.7	-13.6 %
JACKSON	56	69	-18.8 %	13	12	8.3 %	1.9	2.9	-34.6 %
CARIBBEAN	27	51	-47.1 %	7	8	-12.5 %	2.8	2.7	4.4 %
MEMPHIS	26	27	-3.7 %	7	9	-22.2 %	2.2	1.7	26.5 %
Region Total	2,720	2,639	3.1 %	96	99	-3.0 %	12.9	12.4	3.7 %
Southwest									
DALLAS	294	240	22.5 %	42	36	16.7 %	3.7	3.6	3.7 %
SAN ANTONIO	266	262	1.5 %	42	38	10.5 %	3.3	3.5	-6.9 %
HOUSTON	242	282	-14.2 %	33	36	-8.3 %	3.8	4.0	-4.7 %
FT. WORTH	217	252	-13.9 %	38	40	-5.0 %	2.9	3.2	-9.4 %
NEW ORLEANS	125	147	-15.0 %	21	21	0.0 %	3.3	3.4	-4.2 %
ALBUQUERQUE	105	87	20.7 %	20	20	0.0 %	3.1	2.3	31.7 %
LITTLE ROCK	78	85	-8.2 %	17	15	13.3 %	2.5	2.8	-12.3 %
LUBBOCK	54	59	-8.5 %	20	15	33.3 %	1.8	2.2	-19.0 %
OKLAHOMA CITY	54	66	-18.2 %	10	13	-23.1 %	3.1	2.7	14.4 %
TULSA	53	58	-8.6 %	14	14	0.0 %	2.1	2.3	-7.4 %
SHREVEPORT	40	25	60.0 %	15	11	36.4 %	1.5	1.7	-12.0 %
Region Total	1,528	1,563	-2.2 %	83	68	22.1 %	8.9	9.7	-7.6 %
Grand Total	15,814	14,368	10.1 %	300	288	4.2 %	23.9	23.1	3.6 %

Analyze your top competitors and leverage the competitive strategies that work for them. Call us for a free, no obligation, Competitive Landscape Report at (682) 651-5632.

Top 100 Lenders - Year to Date

Rank	Lender	Vol 2018	Vol 2017	Chg %	Mkt Share 2018	Mkt Share 2017	Chg %	Top State
1	AMERICAN ADVISORS GROUP	3559	3194	11 %	22.5 %	22.2 %	1 %	CA
2	FINANCE OF AMERICA REVER	1585	1117	42 %	10.0 %	7.8 %	29 %	CA
3	LIBERTY HOME EQUITY SOLU	1427	1139	25 %	9.0 %	7.9 %	14 %	CA
4	REVERSE MORTGAGE FUNDING	1186	1132	5 %	7.5 %	7.9 %	-5 %	CA
5	ONE REVERSE MORTGAGE LLC	810	762	6 %	5.1 %	5.3 %	-3 %	CA
6	SYNERGY ONE LENDING INC	726	730	-1 %	4.6 %	5.1 %	-10 %	CA
7	LIVE WELL FINANCIAL INC	491	438	12 %	3.1 %	3.0 %	2 %	CA
8	HIGHTECHLENDING INC	422	442	-5 %	2.7 %	3.1 %	-13 %	CA
9	OPEN MORTGAGE LLC	387	163	137 %	2.4 %	1.1 %	116 %	CA
10	LONGBRIDGE FINANCIAL LLC	345	93	271 %	2.2 %	0.6 %	237 %	CA
11	FAIRWAY INDEPENDENT MORT	323	142	127 %	2.0 %	1.0 %	107 %	CO
12	NATIONWIDE EQUITIES CORP	242	345	-30 %	1.5 %	2.4 %	-36 %	CA
13	ALL REVERSE MORTGAGE INC	213	87	145 %	1.3 %	0.6 %	122 %	CA
14	REVERSE MORTGAGESCOM INC	213	266	-20 %	1.3 %	1.9 %	-27 %	TX
15	FIRSTBANK	204	290	-30 %	1.3 %	2.0 %	-36 %	IL
16	CHERRY CREEK MORTGAGE CO	160	104	54 %	1.0 %	0.7 %	40 %	UT
17	RESOLUTE BANK	147	129	14 %	0.9 %	0.9 %	4 %	CA
18	ADVISORS MORTGAGE GROUP	130	246	-47 %	0.8 %	1.7 %	-52 %	CA
19	QUONTIC BANK FSB	127	86	48 %	0.8 %	0.6 %	34 %	TX
20	1ST NATIONS REVERSE MORT	112	11	918 %	0.7 %	0.1 %	825 %	TX
21	AMERICAN PACIFIC MORTGAG	109	64	70 %	0.7 %	0.4 %	55 %	CA
22	THE FEDERAL SAVINGS BANK	105	94	12 %	0.7 %	0.7 %	1 %	NV
23	MONEY HOUSE INC	100	46	117 %	0.6 %	0.3 %	98 %	CA
24	PLAZA HOME MORTGAGE INC	92	134	-31 %	0.6 %	0.9 %	-38 %	CA
25	M & T BANK	70	88	-20 %	0.4 %	0.6 %	-28 %	NY
26	LAND-HOME FINANCIAL SERV	65	41	59 %	0.4 %	0.3 %	44 %	CA
27	MCM HOLDINGS INC	60	96	-38 %	0.4 %	0.7 %	-43 %	FL
28	HOMEBRIDGE FINANCIAL SER	59	31	90 %	0.4 %	0.2 %	73 %	CA
29	BROKER SOLUTIONS INC	56	56	0 %	0.4 %	0.4 %	-9 %	CA
30	SUN WEST MORTGAGE CO INC	56	85	-34 %	0.4 %	0.6 %	-40 %	CA
31	INTERCONTINENTAL CAPITAL	55	24	129 %	0.3 %	0.2 %	108 %	NY
32	SUN AMERICAN MORTGAGE CO	51	47	9 %	0.3 %	0.3 %	-1 %	AZ
33	TOWNEBANK	49	31	58 %	0.3 %	0.2 %	44 %	SC
34	EVOLVE BANK & TRUST	47	52	-10 %	0.3 %	0.4 %	-18 %	FL
35	FRANKLIN FIRST FINANCIAL	46	29	59 %	0.3 %	0.2 %	44 %	MA
36	AMERICAN FINANCIAL NETWO	46	29	59 %	0.3 %	0.2 %	44 %	CA
37	MORTGAGE BROKERS SERVICE	45	26	73 %	0.3 %	0.2 %	57 %	WA
38	COMMUNITY FIRST NATIONAL	42	47	-11 %	0.3 %	0.3 %	-19 %	FL
39	CALIBER HOME LOANS INC	38	20	90 %	0.2 %	0.1 %	73 %	WA
40	AMERICA FIRST FEDERAL CR	32	12	167 %	0.2 %	0.1 %	142 %	UT
41	TOTAL MEDIA MANAGEMENT L	32	46	-30 %	0.2 %	0.3 %	-37 %	AL
42	VIP MORTGAGE INC	31	30	3 %	0.2 %	0.2 %	-6 %	AZ
43	ALPHA MORTGAGE CORPORATI	31	13	138 %	0.2 %	0.1 %	117 %	NC
44	GOLDWATER BANK NA	30	21	43 %	0.2 %	0.1 %	30 %	CO
45	PACIFIC RESIDENTIAL MORT	29	25	16 %	0.2 %	0.2 %	5 %	OR
46	CARROLLTON MORTGAGE CO	27	10	170 %	0.2 %	0.1 %	145 %	CA
47	JET DIRECT FUNDING CORP	27	2	1,250 %	0.2 %	0.0 %	1,127 %	NY
48	SKYLINE FINANCIAL CORPOR	27	14	93 %	0.2 %	0.1 %	75 %	CA
49	NOVA FINANCIAL & INVESTM	26	25	4 %	0.2 %	0.2 %	-6 %	AZ
50	UNITED MORTGAGE CORP	26	13	100 %	0.2 %	0.1 %	82 %	NY

Rank	Lender	Vol 2018	Vol 2017	Chg %	Mkt Share 2018	Mkt Share 2017	Chg %	Top State
51	LOANDEPOTCOM	25	10	150 %	0.2 %	0.1 %	127 %	CO
52	US MORTGAGE CORPORATION	23	10	130 %	0.1 %	0.1 %	109 %	NY
53	GSF MORTGAGE CORPORATION	23	13	77 %	0.1 %	0.1 %	61 %	WA
54	UNIVERSAL LENDING CORP	23	38	-39 %	0.1 %	0.3 %	-45 %	CO
55	MORTGAGESHOP LLC	22	18	22 %	0.1 %	0.1 %	11 %	VA
56	PRIMARY RESIDENTIAL MORT	22	29	-24 %	0.1 %	0.2 %	-31 %	CA
57	CROSSCOUNTRY MORTGAGE	22	7	214 %	0.1 %	0.0 %	186 %	FL
58	MOVEMENT MORTGAGE LLC	22	8	175 %	0.1 %	0.1 %	150 %	CA
59	UNITED NORTHERN MORTGAGE	22	116	-81 %	0.1 %	0.8 %	-83 %	NY
60	CITYWIDE HOME LOANS	21	13	62 %	0.1 %	0.1 %	47 %	UT
61	BANK OF ENGLAND	20	82	-76 %	0.1 %	0.6 %	-78 %	FL
62	EAST COAST CAPITAL CORP	20	8	150 %	0.1 %	0.1 %	127 %	NY
63	PEOPLES HOME EQUITY INC	20	8	150 %	0.1 %	0.1 %	127 %	TN
64	AMERICAS MORTGAGE RESOUR	19	15	27 %	0.1 %	0.1 %	15 %	LA
65	LENOX FINANCIAL MORTGAGE	19	20	-5 %	0.1 %	0.1 %	-14 %	CA
66	ON Q FINANCIAL INC	19	15	27 %	0.1 %	0.1 %	15 %	AZ
67	GEORGETOWN MORTGAGE	18	17	6 %	0.1 %	0.1 %	-4 %	CO
68	GERSHMAN INVESTMENT CORP	18	8	125 %	0.1 %	0.1 %	104 %	MO
69	PARAMOUNT RESIDENTIAL MO	17	1	1,600 %	0.1 %	0.0 %	1,445 %	OR
70	MANN MORTGAGE LLC	17	27	-37 %	0.1 %	0.2 %	-43 %	WA
71	PREMIER MORTGAGE RESOURC	17	4	325 %	0.1 %	0.0 %	286 %	ID
72	GUILD MORTGAGE COMPANY	17	10	70 %	0.1 %	0.1 %	54 %	MT
73	SIERRA PACIFIC MORTGAGE	16	16	0 %	0.1 %	0.1 %	-9 %	CA
74	MOUNTAIN AMERICA CREDIT	16	22	-27 %	0.1 %	0.2 %	-34 %	UT
75	ACADEMY MORTGAGE CORPORA	16	4	300 %	0.1 %	0.0 %	263 %	CO
76	DIRECTORS MORTGAGE INC	16	5	220 %	0.1 %	0.0 %	191 %	OR
77	SUCCESS MORTGAGE PARTNER	16	10	60 %	0.1 %	0.1 %	45 %	MI
78	BRIDGEVIEW BANK GROUP	15	4	275 %	0.1 %	0.0 %	241 %	CA
79	NORTHERN OHIO INVESTMENT	15	23	-35 %	0.1 %	0.2 %	-41 %	AZ
80	BANK OF THE PACIFIC	15	6	150 %	0.1 %	0.0 %	127 %	WA
81	GULF COAST BANK AND TRUS	15	7	114 %	0.1 %	0.0 %	95 %	LA
82	WHOLESALE CAPITAL CORP	14	18	-22 %	0.1 %	0.1 %	-29 %	CA
83	FIRST NATIONAL BANK OF P	14	0		0.1 %	0.0 %		NC
84	MAGNOLIA BANK	13	0		0.1 %	0.0 %		NV
85	AMERIFIRST FINANCIAL INC	13	15	-13 %	0.1 %	0.1 %	-21 %	CA
86	GENEQUITY MORTGAGE INC	13	0		0.1 %	0.0 %		TX
87	ATLANTIC COAST MORTGAGE	13	0		0.1 %	0.0 %		VA
88	VAN DYK MORTGAGE CORPORA	13	6	117 %	0.1 %	0.0 %	97 %	KY
89	INTERSTATE HOME LOAN CEN	13	3	333 %	0.1 %	0.0 %	294 %	NY
90	CMG MORTGAGE INC	13	11	18 %	0.1 %	0.1 %	7 %	CA
91	CONTOUR MORTGAGE CORPORA	13	6	117 %	0.1 %	0.0 %	97 %	NY
92	MOHAVE STATE BANK	13	13	0 %	0.1 %	0.1 %	-9 %	AZ
93	RESIDENTIAL HOME FUNDING	12	16	-25 %	0.1 %	0.1 %	-32 %	NY
94	SIMONICH CORPORATION	12	8	50 %	0.1 %	0.1 %	36 %	CA
95	CATALYST LENDING INC	12	13	-8 %	0.1 %	0.1 %	-16 %	CO
96	SUMMIT FUNDING INC	12	4	200 %	0.1 %	0.0 %	173 %	CA
97	RESIDENTIAL WHOLESALE MO	12	0		0.1 %	0.0 %		CA
98	BANK OF UTAH	12	6	100 %	0.1 %	0.0 %	82 %	UT
99	KLEINBANK	11	5	120 %	0.1 %	0.0 %	100 %	MN
100	HOMEOWNERS FINANCIAL GRO	11	0		0.1 %	0.0 %		AZ

Paid Advertisement

Paid Advertisement

TARGET YOUR MARKETING

RMI Dashboard

Rank	Vol Chg	Chg	Vol YTD	Chg	Mkt Shr	Mkt Chg
1	11%	11%	3559	11%	22.5%	22.2%
2	42%	42%	1585	42%	10.0%	7.8%
3	25%	25%	1427	25%	9.0%	7.9%
4	5%	5%	1186	5%	7.5%	7.9%
5	6%	6%	810	6%	5.1%	5.3%
6	-1%	-1%	726	-1%	4.6%	5.1%
7	12%	12%	491	12%	3.1%	3.0%
8	-5%	-5%	422	-5%	2.7%	3.1%
9	137%	137%	387	137%	2.4%	1.1%
10	271%	271%	345	271%	2.2%	0.6%
11	127%	127%	323	127%	2.0%	1.0%
12	-30%	-30%	242	-30%	1.5%	2.4%
13	145%	145%	213	145%	1.3%	0.6%
14	-20%	-20%	213	-20%	1.3%	1.9%
15	-30%	-30%	204	-30%	1.3%	2.0%
16	54%	54%	160	54%	1.0%	0.7%
17	14%	14%	147	14%	0.9%	0.9%
18	-47%	-47%	130	-47%	0.8%	1.7%
19	48%	48%	127	48%	0.8%	0.6%
20	918%	918%	112	918%	0.7%	0.1%
21	70%	70%	109	70%	0.7%	0.4%
22	12%	12%	105	12%	0.7%	0.7%
23	117%	117%	100	117%	0.6%	0.3%
24	-31%	-31%	92	-31%	0.6%	0.9%
25	-20%	-20%	70	-20%	0.4%	0.6%
26	59%	59%	65	59%	0.4%	0.3%
27	-38%	-38%	60	-38%	0.4%	0.7%
28	90%	90%	59	90%	0.4%	0.2%
29	0%	0%	56	0%	0.4%	0.4%
30	-34%	-34%	56	-34%	0.4%	0.6%
31	129%	129%	55	129%	0.3%	0.2%
32	9%	9%	51	9%	0.3%	0.3%
33	58%	58%	49	58%	0.3%	0.2%
34	-10%	-10%	47	-10%	0.3%	0.4%
35	59%	59%	46	59%	0.3%	0.2%
36	59%	59%	46	59%	0.3%	0.2%
37	73%	73%	45	73%	0.3%	0.2%
38	-11%	-11%	42	-11%	0.3%	0.3%
39	90%	90%	38	90%	0.2%	0.1%
40	167%	167%	32	167%	0.2%	0.1%
41	-30%	-30%	32	-30%	0.2%	0.3%
42	3%	3%	31	3%	0.2%	0.2%
43	138%	138%	31	138%	0.2%	0.1%
44	43%	43%	30	43%	0.2%	0.1%
45	16%	16%	29	16%	0.2%	0.2%
46	170%	170%	27	170%	0.2%	0.1%
47	1,250%	1,250%	27	1,250%	0.2%	0.0%
48	93%	93%	27	93%	0.2%	0.1%
49	4%	4%	26	4%	0.2%	0.2%
50	100%	100%	26	100%	0.2%	0.1%

Your Reverse Mortgage Lending Partner. Putting the pieces together . . . Together.

Expand Your Business. Satisfy Your Clients.

Approved GNMA Issuer.
Cherry Creek Mortgage Co., Inc. NMLS #3001 dba 1st Reverse Mortgage USA®. All Rights Reserved. 3609 S. Wadsworth Blvd., Suite 500 Lakewood, CO 80235.

If you are looking for a new investor relationship and additional liquidity in the secondary markets for all reverse mortgage products, please contact 1st Reverse Mortgage USA® at (877) 217-0166 or www.1strmusa.com

Disclaimer: Although a significant effort is made to assure the accuracy and completeness of the information provided, Reverse Market Insight, Inc. makes no express or implied warranty as to the accuracy, adequacy, completeness, legality of the information. Reverse Market Insight, Inc. does not endorse any products or services advertised on this report. We also waive any liability of any loss or damage that may be incurred as a result of the use of such advertised products or services.