

HECM Lenders (FHA Approved Only)

Industry Overview

HECMs Endorsed through September 2012

Next Release Date: Week 1 of November

Endorsement Growth Change

-10.1 %

Competition Growth

8.1 %

Active Lender Change

20

Figures above reflect change from prior month

PERFORMANCE

Rank/Region	10/11	11/11	12/11	01/12	02/12	03/12	04/12	05/12	06/12	07/12	08/12	09/12	Trend
1 Southeast/Caribbean	1,032	948	1,021	1,155	1,043	851	1,000	949	1,025	856	946	785	▼
2 Pacific/Hawaii	703	601	619	773	832	703	842	686	835	631	651	569	▼
3 Southwest	614	731	632	721	732	593	556	573	685	593	604	559	▼
4 Mid-Atlantic	601	655	588	610	691	611	575	528	658	467	522	447	▼
5 New York/New Jersey	476	526	524	550	723	546	491	544	594	387	412	395	▼
6 Midwest	459	402	452	488	455	380	361	405	471	318	335	317	▼
7 New England	239	240	283	258	297	210	199	247	316	149	156	142	▼
8 Northwest/Alaska	220	167	188	213	261	186	258	187	252	191	210	206	▼
9 Rocky Mountain	166	249	195	250	244	195	198	221	229	181	179	194	▲
10 Great Plains	143	135	134	157	148	106	115	99	122	95	107	92	▼
Total	4,653	4,654	4,636	5,175	5,426	4,381	4,595	4,439	5,187	3,868	4,122	3,706	▼

Find out where the top five markets are in your area by state, county or even zip code to help improve sales performance, market share and maximize opportunities.

Call us for a free briefing at (949) 429-0452.

*Paid Advertisement

Operationally thinking companies rely on ReverseVision

Increased Productivity

ReverseVision is a powerful reverse mortgage software that eliminates overhead, reduces errors and *increases productivity*.

Business Processes

ReverseVision is a role-based collaborative tool that enforces business rules and *ensures* highest quality loans.



(949) 429-0452

info@rminsight.net

www.rminsight.net

Interested in industry commentary, data and analysis? [CLICK HERE](#)

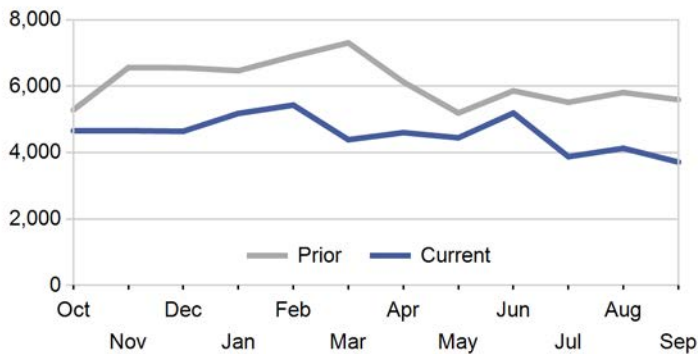
Subscribe to our [FREE ReverseIQ Newsletter](#) and [FREE Industry Reports](#)

Competition

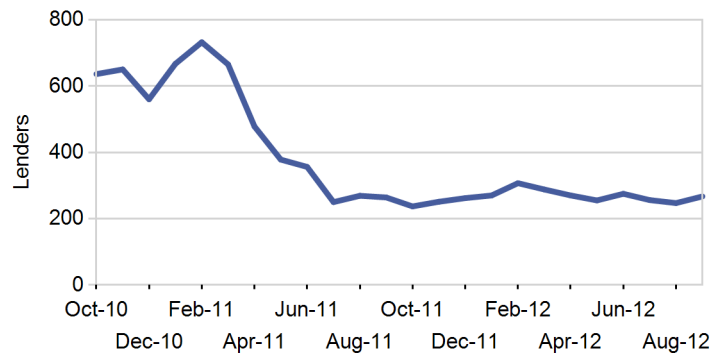
Top 10 Lenders

Rank / Lender	10/11	11/11	12/11	01/12	02/12	03/12	04/12	05/12	06/12	07/12	08/12	09/12	Total	Trend
1 METLIFE BANK	913	1,273	1,321	1,379	1,132	929	911	928	1,246	250	10	3	10,295	▼
2 ONE REVERSE MORTGAGE LLC	446	398	419	439	417	384	407	410	403	401	418	365	4,907	▼
3 GENWORTH FINANCIAL HM EQUITY A	266	362	306	386	643	345	346	227	399	296	388	443	4,407	▲
4 URBAN FINANCIAL GROUP	301	284	357	354	350	224	281	309	357	298	309	282	3,706	▼
5 AMERICAN ADVISORS GROUP	199	244	184	227	186	238	293	205	231	252	547	410	3,216	▼
6 GENERATION MORTGAGE COMPANY	288	253	209	245	267	241	207	227	221	260	255	197	2,870	▼
7 SECURITY ONE LENDING	168	121	172	220	241	234	244	274	262	231	338	264	2,769	▼
8 THE FIRST NATIONAL BANK LAYTON	85	89	124	132	147	126	147	172	245	219	220	50	1,756	▼
9 REVERSE MORTGAGE USA INC	73	107	100	81	111	101	85	109	87	82	113	108	1,157	▼
10 WELLS FARGO BANK NA	787	24	70	14	3	1	5	1	4	13	1	3	926	▲
Top 10 SubTotal	3,526	3,155	3,262	3,477	3,497	2,823	2,926	2,862	3,455	2,302	2,599	2,125	36,009	▼
Industry Total	4,653	4,654	4,636	5,175	5,426	4,381	4,595	4,439	5,187	3,868	4,122	3,706	54,842	▼

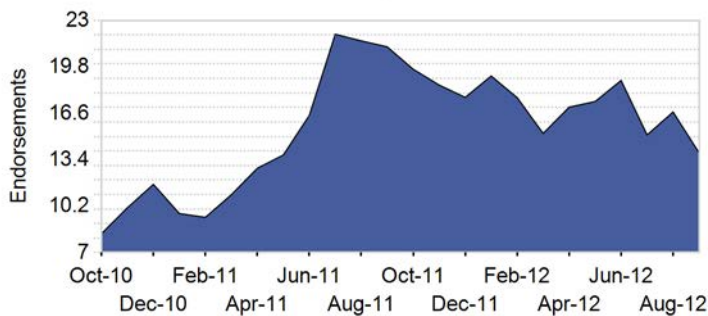
Endorsement Volume



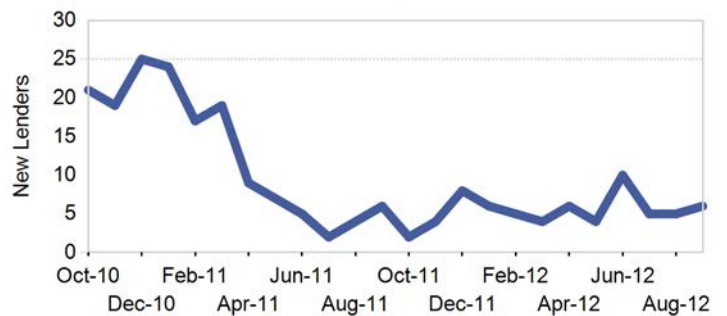
Active Lenders



Endorsements per Lender

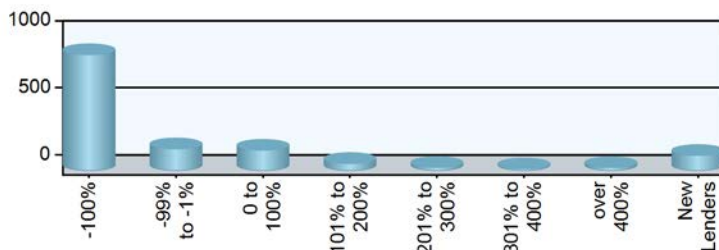


New Lenders by Month



Paid Advertisement

Lender Distribution by YTD Growth Rate



RMS introduces the newest path to success.

RMPATH | **RMS**
Reverse Mortgage Solutions, Inc.

Wholesale Lending • Correspondent Lending • Aggregation Partnering

Market Performance

Market	YTD Volume 2012	YTD Volume 2011	Chg %	Active Lenders 2012	Active Lenders 2011	Chg %	Volume / Lender 2012	Volume / Lender 2011	Chg %
Great Plains									
KANSAS CITY	327	436	-25.0 %	27	36	-25.0 %	2.9	3.9	-26.9 %
ST. LOUIS	260	351	-25.9 %	21	39	-46.2 %	3.0	3.3	-8.4 %
DES MOINES	205	244	-16.0 %	19	24	-20.8 %	2.7	3.9	-29.9 %
TOPEKA	144	163	-11.7 %	21	20	5.0 %	2.0	2.4	-17.4 %
OMAHA	105	178	-41.0 %	14	16	-12.5 %	2.0	3.5	-44.0 %
Region Total	1,041	1,372	-24.1 %	49	73	-32.9 %	5.1	6.4	-20.2 %
Mid-Atlantic									
PHILADELPHIA	1,643	2,195	-25.1 %	81	110	-26.4 %	5.3	6.6	-19.8 %
RICHMOND	1,225	1,871	-34.5 %	67	89	-24.7 %	4.3	5.6	-23.0 %
BALTIMORE	903	1,510	-40.2 %	61	92	-33.7 %	3.8	4.8	-21.3 %
WASH. D.C.	688	994	-30.8 %	61	74	-17.6 %	3.2	4.1	-23.5 %
PITTSBURGH	305	364	-16.2 %	31	48	-35.4 %	2.6	2.8	-6.7 %
WILMINGTON	212	297	-28.6 %	34	39	-12.8 %	1.9	2.4	-22.6 %
CHARLESTON	133	138	-3.6 %	17	18	-5.6 %	2.7	2.2	21.9 %
Region Total	5,109	7,369	-30.7 %	146	217	-32.7 %	8.1	9.9	-18.3 %
Midwest									
CHICAGO	857	1,193	-28.2 %	48	102	-52.9 %	4.7	4.4	8.1 %
INDIANAPOLIS	498	578	-13.8 %	38	45	-15.6 %	4.0	4.5	-12.1 %
MILWAUKEE	426	651	-34.6 %	29	43	-32.6 %	3.5	4.7	-25.6 %
MINN. ST. PAUL	379	791	-52.1 %	32	42	-23.8 %	3.3	6.7	-50.3 %
CLEVELAND	357	464	-23.1 %	35	43	-18.6 %	2.9	3.7	-21.5 %
GRAND RAPIDS	237	308	-23.1 %	20	32	-37.5 %	2.9	3.0	-3.2 %
COLUMBUS	215	232	-7.3 %	28	29	-3.4 %	2.8	2.8	0.6 %
SPRINGFIELD	179	217	-17.5 %	19	32	-40.6 %	2.3	2.4	-4.2 %
DETROIT	160	212	-24.5 %	19	29	-34.5 %	2.1	2.4	-10.7 %
CINCINNATI	145	227	-36.1 %	21	35	-40.0 %	2.2	2.3	-4.3 %
FLINT	77	93	-17.2 %	17	25	-32.0 %	1.5	1.5	1.8 %
Region Total	3,530	4,966	-28.9 %	107	221	-51.6 %	8.2	8.3	-0.6 %
New England									
BOSTON	793	1,132	-29.9 %	28	79	-64.6 %	7.2	5.4	33.3 %
HARTFORD	568	771	-26.3 %	49	72	-31.9 %	3.6	3.9	-6.1 %
BANGOR	219	273	-19.8 %	26	26	0.0 %	2.9	3.7	-22.6 %
MANCHESTER	179	248	-27.8 %	25	28	-10.7 %	2.4	3.1	-23.2 %
PROVIDENCE	143	176	-18.8 %	13	25	-48.0 %	2.8	2.7	4.6 %
BURLINGTON	72	104	-30.8 %	9	12	-25.0 %	2.5	3.5	-28.4 %
Region Total	1,974	2,704	-27.0 %	77	149	-48.3 %	7.3	7.1	3.0 %
New York/New Jersey									
NEW YORK	2,183	2,440	-10.5 %	62	126	-50.8 %	7.6	6.1	25.1 %
NEWARK	883	1,349	-34.5 %	75	93	-19.4 %	3.3	5.4	-38.3 %
CAMDEN	780	989	-21.1 %	71	82	-13.4 %	3.2	3.9	-17.6 %
ALBANY	522	610	-14.4 %	35	48	-27.1 %	3.9	3.7	5.9 %
BUFFALO	274	299	-8.4 %	18	24	-25.0 %	3.9	3.7	7.6 %
Region Total	4,642	5,687	-18.4 %	116	199	-41.7 %	9.0	8.4	7.5 %
Northwest/Alaska									
SEATTLE	844	1,201	-29.7 %	56	79	-29.1 %	3.6	4.6	-21.4 %
PORTLAND	708	1,006	-29.6 %	51	87	-41.4 %	3.4	3.9	-13.2 %
BOISE	229	377	-39.3 %	33	47	-29.8 %	2.2	3.2	-29.2 %
SPOKANE	144	188	-23.4 %	27	32	-15.6 %	1.5	2.1	-26.5 %
ANCHORAGE	39	70	-44.3 %	9	8	12.5 %	1.4	3.9	-64.1 %
Region Total	1,964	2,842	-30.9 %	85	136	-37.5 %	5.6	6.8	-17.2 %
Pacific/Hawaii									
LOS ANGELES	1,814	2,427	-25.3 %	83	156	-46.8 %	6.5	6.6	-2.1 %

Market	YTD Volume 2012	YTD Volume 2011	Chg %	Active Lenders 2012	Active Lenders 2011	Chg %	Volume / Lender 2012	Volume / Lender 2011	Chg %
SANTA ANA	1,238	1,546	-19.9 %	72	128	-43.8 %	5.3	5.1	5.7 %
SAN FRANCISCO	1,045	1,688	-38.1 %	56	98	-42.9 %	5.2	6.1	-13.9 %
SAN DIEGO	594	790	-24.8 %	45	83	-45.8 %	4.1	4.2	-2.1 %
PHOENIX	587	873	-32.8 %	42	54	-22.2 %	4.1	5.6	-27.0 %
SACRAMENTO	483	755	-36.0 %	43	68	-36.8 %	3.6	4.2	-14.6 %
FRESNO	217	269	-19.3 %	32	36	-11.1 %	2.1	2.6	-21.8 %
HONOLULU	182	254	-28.3 %	16	38	-57.9 %	2.8	2.4	13.7 %
LAS VEGAS	147	211	-30.3 %	19	22	-13.6 %	1.9	3.0	-36.7 %
TUCSON	138	231	-40.3 %	23	31	-25.8 %	1.7	2.5	-32.1 %
RENO	77	105	-26.7 %	15	16	-6.3 %	1.5	2.1	-25.4 %
Region Total	6,522	9,149	-28.7 %	152	321	-52.6 %	11.2	11.3	-0.8 %
Rocky Mountain									
DENVER	814	1,004	-18.9 %	45	69	-34.8 %	5.1	5.1	-0.2 %
SALT LAKE CITY	773	743	4.0 %	36	64	-43.8 %	4.8	3.7	29.5 %
HELENA	150	252	-40.5 %	20	23	-13.0 %	2.1	2.8	-24.8 %
CASPER	96	132	-27.3 %	20	17	17.6 %	1.7	2.6	-33.9 %
SIOUX FALLS	39	70	-44.3 %	8	9	-11.1 %	2.1	3.3	-35.9 %
FARGO	19	39	-51.3 %	7	4	75.0 %	1.4	3.8	-63.0 %
Region Total	1,891	2,240	-15.6 %	84	122	-31.1 %	6.2	6.0	4.4 %
Southeast/Caribbean									
CARIBBEAN	1,150	1,281	-10.2 %	23	19	21.1 %	8.3	12.0	-30.4 %
GREENSBORO	1,136	1,433	-20.7 %	37	28	32.1 %	6.5	12.2	-46.3 %
MIAMI	980	1,310	-25.2 %	67	126	-46.8 %	4.0	4.4	-9.9 %
ATLANTA	800	1,289	-37.9 %	44	77	-42.9 %	4.7	5.3	-12.5 %
BIRMINGHAM	695	921	-24.5 %	37	53	-30.2 %	4.5	5.1	-12.4 %
COLUMBIA	651	963	-32.4 %	42	44	-4.5 %	3.8	6.2	-37.8 %
JACKSONVILLE	567	830	-31.7 %	42	97	-56.7 %	3.6	3.9	-7.1 %
TAMPA	543	870	-37.6 %	51	87	-41.4 %	3.4	3.9	-12.4 %
KNOXVILLE	466	493	-5.5 %	38	45	-15.6 %	3.4	3.7	-6.6 %
ORLANDO	407	575	-29.2 %	43	81	-46.9 %	2.8	3.7	-24.8 %
NASHVILLE	379	363	4.4 %	33	40	-17.5 %	2.9	3.1	-7.6 %
JACKSON	368	417	-11.8 %	22	29	-24.1 %	4.1	4.2	-0.4 %
LOUISVILLE	307	347	-11.5 %	29	36	-19.4 %	3.4	3.1	9.3 %
MEMPHIS	161	189	-14.8 %	28	32	-12.5 %	1.9	2.1	-12.6 %
Region Total	8,610	11,281	-23.7 %	167	346	-51.7 %	11.6	11.9	-2.8 %
Southwest									
HOUSTON	993	1,275	-22.1 %	52	54	-3.7 %	4.8	6.4	-24.8 %
SAN ANTONIO	814	1,220	-33.3 %	49	65	-24.6 %	4.0	5.2	-22.6 %
DALLAS	764	922	-17.1 %	56	71	-21.1 %	3.7	4.1	-11.0 %
FT. WORTH	700	914	-23.4 %	55	62	-11.3 %	3.5	3.9	-11.0 %
NEW ORLEANS	657	762	-13.8 %	29	49	-40.8 %	4.4	4.2	5.5 %
LITTLE ROCK	385	528	-27.1 %	29	37	-21.6 %	3.2	3.8	-16.4 %
LUBBOCK	364	412	-11.7 %	38	43	-11.6 %	2.6	2.9	-12.7 %
ALBUQUERQUE	315	458	-31.2 %	33	41	-19.5 %	2.4	2.9	-14.8 %
OKLAHOMA CITY	255	246	3.7 %	24	24	0.0 %	2.9	2.8	5.7 %
TULSA	235	236	-0.4 %	22	26	-15.4 %	2.8	2.8	-0.5 %
SHREVEPORT	134	168	-20.2 %	18	26	-30.8 %	1.7	2.3	-23.4 %
Region Total	5,616	7,141	-21.4 %	117	173	-32.4 %	11.3	11.4	-0.7 %
Grand Total	40,899	54,751	-25.3 %	537	1,286	-58.2 %	16.8	15.3	9.5 %

Analyze your top competitors and leverage the competitive strategies that work for them. Call us for a free, no obligation, Competitive Landscape Report at (949) 429-0452.

Top 100 Lenders - Year to Date

Rank	Lender	Vol 2012	Vol 2011	Chg %	Mkt Share 2012	Mkt Share 2011	Chg %	Top State
1	METLIFE BANK	6788	7005	-3 %	16.6 %	12.8 %	30 %	CA
2	ONE REVERSE MORTGAGE LLC	3644	3356	9 %	8.9 %	6.1 %	45 %	TX
3	GENWORTH FINANCIAL HM EQ	3473	1376	152 %	8.5 %	2.5 %	238 %	CA
4	URBAN FINANCIAL GROUP	2764	2788	-1 %	6.8 %	5.1 %	33 %	CA
5	AMERICAN ADVISORS GROUP	2589	1188	118 %	6.3 %	2.2 %	192 %	TX
6	SECURITY ONE LENDING	2308	1032	124 %	5.6 %	1.9 %	199 %	CA
7	GENERATION MORTGAGE COMP	2120	2261	-6 %	5.2 %	4.1 %	26 %	NY
8	THE FIRST NATIONAL BANK	1458	465	214 %	3.6 %	0.8 %	320 %	CA
9	REVERSE MORTGAGE USA INC	877	687	28 %	2.1 %	1.3 %	71 %	TX
10	SUN WEST MORTGAGE CO INC	836	242	245 %	2.0 %	0.4 %	362 %	CA
11	CHERRY CREEK MORTGAGE CO	585	196	198 %	1.4 %	0.4 %	300 %	UT
12	NEW DAY FINANCIAL LLC	524	532	-2 %	1.3 %	1.0 %	32 %	TX
13	M & T BANK	463	422	10 %	1.1 %	0.8 %	47 %	NY
14	SENIOR MORTGAGE BANKERS	357	464	-23 %	0.9 %	0.8 %	3 %	ZZ
15	GREENLIGHT FINANCIAL SER	347	1	34,600 %	0.8 %	0.0 %	46,352 %	CA
16	NET EQUITY FINANCIAL INC	328	258	27 %	0.8 %	0.5 %	70 %	PA
17	MONEY HOUSE INC	325	358	-9 %	0.8 %	0.7 %	22 %	ZZ
18	ASSOCIATED MORTGAGE BANK	315	52	506 %	0.8 %	0.1 %	711 %	NY
19	GMFS LLC	288	99	191 %	0.7 %	0.2 %	289 %	LA
20	ROYAL UNITED MORTGAGE LL	284	239	19 %	0.7 %	0.4 %	59 %	TX
21	MAVERICK FUNDING CORP	278	0		0.7 %	0.0 %		NJ
22	PLAZA HOME MORTGAGE INC	260	206	26 %	0.6 %	0.4 %	69 %	CA
23	NATIONWIDE EQUITIES CORP	253	128	98 %	0.6 %	0.2 %	165 %	NY
24	ASPIRE FINANCIAL INC	252	202	25 %	0.6 %	0.4 %	67 %	TX
25	OPEN MORTGAGE LLC	211	117	80 %	0.5 %	0.2 %	141 %	CA
26	GREAT OAK LENDING	182	358	-49 %	0.4 %	0.7 %	-32 %	MD
27	FIRSTBANK	182	0		0.4 %	0.0 %		AL
28	REVERSE MORTGAGE SOLUTIO	179	116	54 %	0.4 %	0.2 %	107 %	TX
29	MAS ASSOCIATES LLC	174	180	-3 %	0.4 %	0.3 %	29 %	MD
30	HIGH TECH LENDING INC	169	57	196 %	0.4 %	0.1 %	297 %	CA
31	TOWNEBANK	169	29	483 %	0.4 %	0.1 %	680 %	VA
32	UNITED NORTHERN MORTGAGE	161	71	127 %	0.4 %	0.1 %	204 %	NY
33	ATLANTIC BAY MORTGAGE GR	149	53	181 %	0.4 %	0.1 %	276 %	VA
34	MCM HOLDINGS INC	139	49	184 %	0.3 %	0.1 %	280 %	FL
35	AMERICAN PACIFIC MORTGAG	121	116	4 %	0.3 %	0.2 %	40 %	CA
36	CONTOUR MORTGAGE CORPORA	111	28	296 %	0.3 %	0.1 %	431 %	NY
37	AXIA FINANCIAL LLC	110	53	108 %	0.3 %	0.1 %	178 %	WA
38	TOP FLITE FINANCIAL INC	107	30	257 %	0.3 %	0.1 %	377 %	GA
39	SIDUS FINANCIAL LLC	106	109	-3 %	0.3 %	0.2 %	30 %	NC
40	NETWORK FUNDING LP	106	105	1 %	0.3 %	0.2 %	35 %	TX
41	CONTINENTAL HOME LOANS I	102	28	264 %	0.2 %	0.1 %	388 %	NY
42	CHRISTENSEN FINANCIAL IN	99	85	16 %	0.2 %	0.2 %	56 %	FL
43	HARVARD HOME MORTGAGE IN	97	85	14 %	0.2 %	0.2 %	53 %	NC
44	STERLING SAVINGS BANK	97	66	47 %	0.2 %	0.1 %	97 %	OR
45	SUN AMERICAN MORTGAGE CO	97	106	-8 %	0.2 %	0.2 %	23 %	AZ
46	UNIVERSAL LENDING CORPOR	96	71	35 %	0.2 %	0.1 %	81 %	CO
47	VIG MORTGAGE CORP	95	87	9 %	0.2 %	0.2 %	46 %	ZZ
48	MORTGAGESHOP LLC	95	63	51 %	0.2 %	0.1 %	102 %	VA
49	VAN DYK MORTGAGE CORPORA	94	34	176 %	0.2 %	0.1 %	270 %	TX
50	VANGUARD FUNDING LLC	93	34	174 %	0.2 %	0.1 %	266 %	NY

Rank	Lender	Vol 2012	Vol 2011	Chg %	Mkt Share 2012	Mkt Share 2011	Chg %	Top State
51	GATEWAY FUNDING DIVERSIF	93	75	24 %	0.2 %	0.1 %	66 %	PA
52	DAS ACQUISITION CO LLC	87	18	383 %	0.2 %	0.0 %	547 %	MO
53	SOUTHERN TRUST MORTGAGE	86	33	161 %	0.2 %	0.1 %	249 %	VA
54	VALUE FINANCIAL MORTGAGE	84	63	33 %	0.2 %	0.1 %	78 %	FL
55	NEW AMERICAN MORTGAGE LL	84	27	211 %	0.2 %	0.0 %	316 %	VA
56	FULTON BANK NATIONAL ASS	84	75	12 %	0.2 %	0.1 %	50 %	PA
57	JAMES B NUTTER AND COMPA	82	55	49 %	0.2 %	0.1 %	100 %	KS
58	WEST TOWN SAVINGS BANK	81	88	-8 %	0.2 %	0.2 %	23 %	NC
59	SUCCESS MORTGAGE PARTNER	78	41	90 %	0.2 %	0.1 %	155 %	SC
60	PROFICIO MORTGAGE VENTUR	77	21	267 %	0.2 %	0.0 %	391 %	TX
61	ENVOY MORTGAGE LTD	74	102	-27 %	0.2 %	0.2 %	-3 %	WI
62	ADVISORS MORTGAGE GROUP	73	30	143 %	0.2 %	0.1 %	226 %	NY
63	OCEANFIRST BANK	68	60	13 %	0.2 %	0.1 %	52 %	NJ
64	MORTGAGE SERVICES III LL	67	41	63 %	0.2 %	0.1 %	119 %	IL
65	FIRSTAR BANK NA	65	0		0.2 %	0.0 %		OK
66	LIVE WELL FINANCIAL INC	64	135	-53 %	0.2 %	0.2 %	-37 %	CA
67	METRO ISLAND MORTGAGE IN	63	79	-20 %	0.2 %	0.1 %	7 %	ZZ
68	PRIMARY RESIDENTIAL MORT	63	72	-13 %	0.2 %	0.1 %	17 %	TN
69	FIRST CENTURY BANK NA	59	19	211 %	0.1 %	0.0 %	316 %	FL
70	DOLLAR BANK FSB	59	18	228 %	0.1 %	0.0 %	339 %	OH
71	HOMESTREET BANK	59	29	103 %	0.1 %	0.1 %	172 %	WA
72	GERSHMAN INVESTMENT CORP	57	43	33 %	0.1 %	0.1 %	77 %	MO
73	FRANKLIN FIRST FINANCIAL	54	45	20 %	0.1 %	0.1 %	61 %	NY
74	PRIMELENDING A PLAINSCAP	54	197	-73 %	0.1 %	0.4 %	-63 %	VA
75	PEOPLES BANK	54	5	980 %	0.1 %	0.0 %	1,346 %	NM
76	COMMUNITY FIRST BANK	53	25	112 %	0.1 %	0.0 %	184 %	SC
77	WHOLESALE CAPITAL CORP	48	32	50 %	0.1 %	0.1 %	101 %	CA
78	MAIN STREET HOME LOANS L	48	2	2,300 %	0.1 %	0.0 %	3,113 %	GA
79	COLONIAL SAVINGS FA	46	45	2 %	0.1 %	0.1 %	37 %	TX
80	PACIFIC RESIDENTIAL MORT	46	4	1,050 %	0.1 %	0.0 %	1,439 %	OR
81	WELLS FARGO BANK NA	45	14124	-100 %	0.1 %	25.8 %	-100 %	NJ
82	BANK OF ENGLAND	44	12	267 %	0.1 %	0.0 %	391 %	NC
83	SPECTRA FUNDING	43	9	378 %	0.1 %	0.0 %	540 %	MD
84	CLIFFCO INC	42	10	320 %	0.1 %	0.0 %	462 %	NY
85	PINNACLE CAPITAL MORTGAG	42	50	-16 %	0.1 %	0.1 %	12 %	WA
86	EQUIPOINT FINANCIAL NETW	41	254	-84 %	0.1 %	0.5 %	-78 %	TX
87	LEADER ONE FINANCIAL COR	41	14	193 %	0.1 %	0.0 %	292 %	KS
88	EASTERN BANK	40	31	29 %	0.1 %	0.1 %	73 %	MA
89	EQUITY MORTGAGE COMPANY	40	48	-17 %	0.1 %	0.1 %	12 %	MT
90	AMERICAN NATIONWIDE MORT	38	27	41 %	0.1 %	0.0 %	88 %	NJ
91	AMERICAN NATIONWIDE MORT	38	20	90 %	0.1 %	0.0 %	154 %	VA
92	AMERICAN NEIGHBORHOOD MT	37	4	825 %	0.1 %	0.0 %	1,138 %	NJ
93	RESIDENTIAL HOME FUNDING	36	21	71 %	0.1 %	0.0 %	129 %	NY
94	GUARANTEED HOME MTG CO I	35	52	-33 %	0.1 %	0.1 %	-10 %	NY
95	FAIRWAY INDEPENDENT MORT	35	25	40 %	0.1 %	0.0 %	87 %	AZ
96	HAMILTON GROUP FUNDING I	35	7	400 %	0.1 %	0.0 %	569 %	FL
97	FIRST PRIORITY FINANCIAL	33	25	32 %	0.1 %	0.0 %	77 %	WA
98	DIRECTORS FINANCIAL GROU	33	8	313 %	0.1 %	0.0 %	452 %	CA
99	UNIVERSAL MORTGAGE AND F	33	7	371 %	0.1 %	0.0 %	531 %	FL
100	AMERICAN PORTFOLIO MORTG	32	1	3,100 %	0.1 %	0.0 %	4,184 %	IL

Paid Advertisement

The leaves may be changing, but PRC consistently provides exceptional title and settlement services throughout the seasons.

PRC
PREMIER REVERSE CLOSINGS
DIVISION OF NATIONAL CLOSING SOLUTIONS
DIVISION OF PLACER TITLE COMPANY

800.542.4113 | www.PRCclosings.com

About Reverse Market Insight, Inc.
Reverse Market Insight (RMI) is the premier provider of market intelligence and strategic advisory solutions in the reverse mortgage marketplace.

RMI is proud to serve 8 of the top 10 reverse mortgage lenders as clients and is the exclusive strategic partner of the National Reverse Mortgage Lenders Association (NRMLA) for market intelligence.

31 Journey | Suite 110 | Aliso Viejo, CA 92656
(949) 429-0452
<http://www.rminight.net>

Disclaimer: Although a significant effort is made to assure the accuracy and completeness of the information provided, Reverse Market Insight, Inc. makes no express or implied warranty as to the accuracy, adequacy, completeness, legality of the information. Reverse Market Insight, Inc. does not endorse any products or services advertised on this report. We also waive any liability of any loss or damage that may be incurred as a result of the use of such advertised products or services.