

HECM Lenders (FHA Approved Only)

Industry Overview

HECMs Endorsed through April 2014

Next Release Date: Week 1 of June

Endorsement Growth Change

-9.7 %

Competition Growth

-7.0 %

Active Lender Change

-19

Figures above reflect change from prior month

PERFORMANCE

Rank/Region	05/13	06/13	07/13	08/13	09/13	10/13	11/13	12/13	01/14	02/14	03/14	04/14	Trend
1 Pacific/Hawaii	1,049	940	1,216	1,021	861	873	1,079	980	1,249	1,126	888	926	▲
2 Southeast/Caribbean	1,180	1,090	1,124	1,161	986	958	947	820	919	893	921	882	▼
3 Southwest	735	869	779	675	595	567	543	511	561	549	534	513	▼
4 Mid-Atlantic	582	601	629	624	531	412	545	473	557	585	486	465	▼
5 New York/New Jersey	516	528	567	547	422	343	435	406	466	548	539	346	▼
6 Midwest	406	459	505	518	418	398	391	346	455	541	448	374	▼
7 Rocky Mountain	264	280	285	235	204	192	243	251	237	247	200	216	▲
8 New England	231	236	250	254	205	177	208	168	267	326	259	168	▼
9 Northwest/Alaska	251	202	258	200	203	176	185	157	217	222	219	179	▼
10 Great Plains	138	167	143	147	102	92	114	111	133	129	124	101	▼
Total	5,352	5,372	5,756	5,382	4,527	4,188	4,690	4,223	5,061	5,166	4,618	4,170	▼

Find out where the top five markets are in your area by state, county or even zip code to help improve sales performance, market share and maximize opportunities.

Call us for a free briefing at (682) 651-5632.

*Paid Advertisement



Are you missing out on revenue?

Learn why thousands of trusted brokers, lenders, principal agents and investors use **REVERSEVISION** technology to close more than **half of all reverse loans**.

REVERSEVISION 919.834.0070
info@reversevision.com
SERVING THE REVERSE MORTGAGE INDUSTRY SINCE 2007.



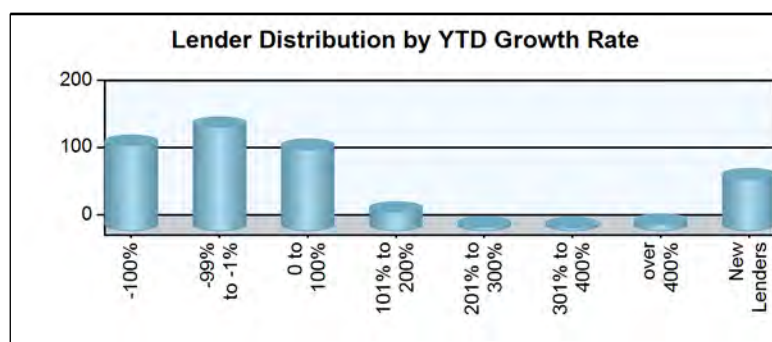
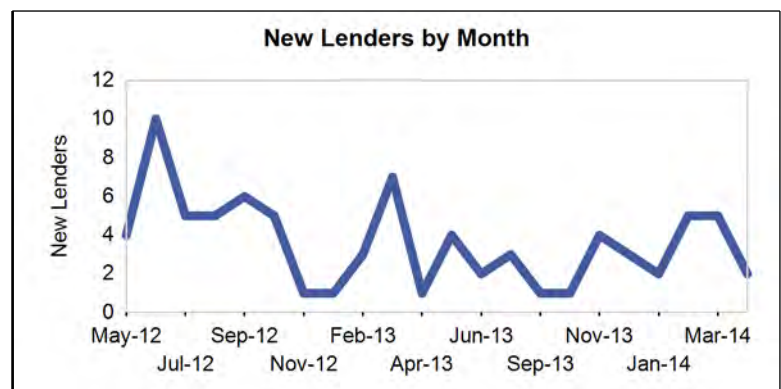
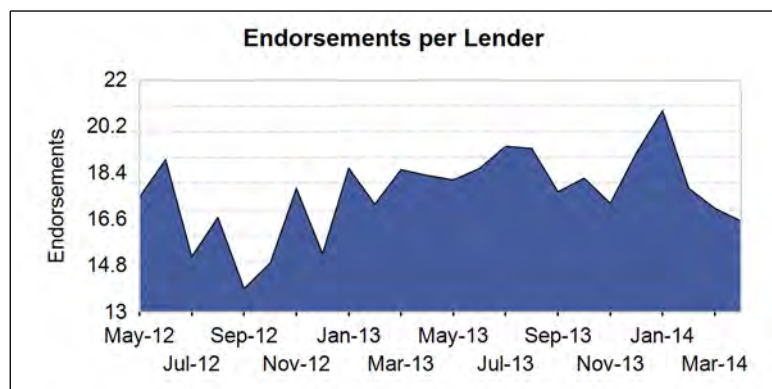
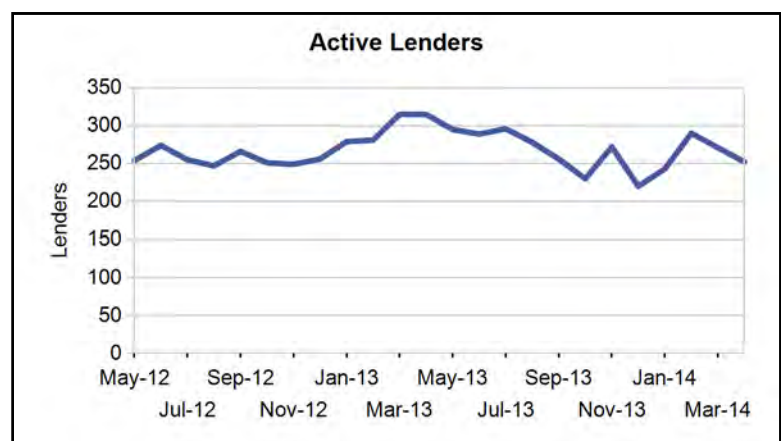
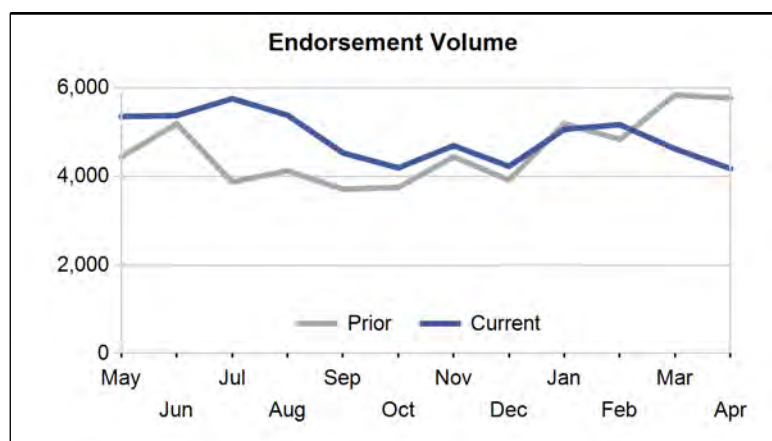
(682) 651-5632
info@rminight.net
www.rminight.net

Interested in industry commentary, data and analysis? [CLICK HERE](#)
Subscribe to our [FREE ReverseIQ Newsletter](#) and [FREE Industry Reports](#)

Competition

Top 10 Lenders

Rank / Lender	05/13	06/13	07/13	08/13	09/13	10/13	11/13	12/13	01/14	02/14	03/14	04/14	Total	Trend
1 AMERICAN ADVISORS GROUP	294	517	914	925	773	801	683	621	734	754	789	1,194	8,999	▲
2 RMS/SECURITY ONE LENDING	615	536	592	570	604	442	564	676	954	660	243	236	6,692	▼
3 LIBERTY HOME EQUITY SOLUTIONS INC	510	618	645	658	407	257	471	175	201	838	968	337	6,085	▼
4 ONE REVERSE MORTGAGE LLC	478	459	429	465	452	407	475	376	470	357	406	409	5,183	▲
5 URBAN FINANCIAL OF AMERICA LLC	499	365	389	277	301	308	334	211	351	332	346	295	4,008	▼
6 PROFICIO MORTGAGE VENTURES LLC	319	283	254	199	162	210	158	143	209	195	155	120	2,407	▼
7 GENERATION MORTGAGE COMPANY	250	284	282	196	167	184	95	116	226	295	104	96	2,295	▼
8 REVERSE MORTGAGE USA INC	123	238	127	107	127	100	100	137	107				1,166	▼
9 ASSOCIATED MORTGAGE BANKERS INC	78	74	78	69	69	45	49	91	121	82	37	46	839	▲
10 OPEN MORTGAGE LLC	53	59	124	77	53	69	71	84	59	26	24	27	726	▲
Top 10 SubTotal	3,219	3,433	3,834	3,543	3,115	2,823	3,000	2,630	3,432	3,539	3,072	2,760	38,400	▼
Industry Total	5,352	5,372	5,756	5,382	4,527	4,188	4,690	4,223	5,061	5,166	4,618	4,170	58,505	▼



Paid Advertisement

- Wholesale Lending
- Correspondent Lending

Market Performance

Market	YTD Volume 2014	YTD Volume 2013	Chg %	Active Lenders 2014	Active Lenders 2013	Chg %	Volume / Lender 2014	Volume / Lender 2013	Chg %
Great Plains									
KANSAS CITY	124	179	-30.7 %	19	24	-20.8 %	2.7	3.3	-16.1 %
DES MOINES	121	117	3.4 %	15	13	15.4 %	4.2	3.6	17.3 %
ST. LOUIS	118	133	-11.3 %	14	18	-22.2 %	3.3	2.8	15.5 %
TOPEKA	74	85	-12.9 %	17	19	-10.5 %	2.1	2.0	8.3 %
OMAHA	50	68	-26.5 %	13	14	-7.1 %	2.1	2.2	-4.8 %
Region Total	487	582	-16.3 %	37	38	-2.6 %	5.3	5.8	-9.7 %
Mid-Atlantic									
PHILADELPHIA	639	864	-26.0 %	60	63	-4.8 %	5.0	5.7	-11.4 %
RICHMOND	483	635	-23.9 %	41	53	-22.6 %	4.7	5.0	-5.8 %
BALTIMORE	328	438	-25.1 %	43	41	4.9 %	3.7	4.4	-16.3 %
WASH. D.C.	315	357	-11.8 %	41	40	2.5 %	3.6	3.7	-3.1 %
PITTSBURGH	194	221	-12.2 %	27	31	-12.9 %	3.4	3.1	10.1 %
CHARLESTON	70	86	-18.6 %	13	17	-23.5 %	2.7	2.3	15.6 %
WILMINGTON	64	80	-20.0 %	17	24	-29.2 %	1.8	1.7	7.9 %
Region Total	2,093	2,681	-21.9 %	99	112	-11.6 %	8.5	9.4	-9.7 %
Midwest									
CHICAGO	403	449	-10.2 %	38	37	2.7 %	4.8	5.4	-10.4 %
INDIANAPOLIS	231	284	-18.7 %	30	28	7.1 %	3.5	4.0	-12.9 %
MILWAUKEE	212	220	-3.6 %	24	26	-7.7 %	3.7	3.0	23.1 %
MINN. ST. PAUL	203	210	-3.3 %	21	22	-4.5 %	4.1	3.4	18.0 %
CLEVELAND	176	219	-19.6 %	24	27	-11.1 %	3.5	3.4	0.9 %
GRAND RAPIDS	153	134	14.2 %	19	19	0.0 %	3.6	2.8	27.4 %
DETROIT	133	116	14.7 %	21	19	10.5 %	2.9	2.6	14.3 %
COLUMBUS	119	149	-20.1 %	19	20	-5.0 %	3.2	3.4	-5.7 %
SPRINGFIELD	88	110	-20.0 %	20	18	11.1 %	2.3	2.8	-16.8 %
CINCINNATI	65	102	-36.3 %	12	21	-42.9 %	2.5	2.2	14.0 %
FLINT	35	43	-18.6 %	13	15	-13.3 %	1.8	1.5	22.2 %
Region Total	1,818	2,036	-10.7 %	87	88	-1.1 %	8.9	9.2	-3.1 %
New England									
BOSTON	431	491	-12.2 %	30	33	-9.1 %	6.5	6.9	-5.8 %
HARTFORD	278	284	-2.1 %	38	36	5.6 %	3.7	3.6	2.2 %
BANGOR	130	107	21.5 %	17	17	0.0 %	3.4	2.3	43.0 %
PROVIDENCE	66	66	0.0 %	11	13	-15.4 %	2.2	3.0	-26.5 %
MANCHESTER	65	81	-19.8 %	13	19	-31.6 %	2.3	2.1	8.0 %
BURLINGTON	50	43	16.3 %	11	8	37.5 %	2.6	2.4	4.9 %
Region Total	1,020	1,072	-4.9 %	63	68	-7.4 %	7.2	7.0	3.4 %
New York/New Jersey									
NEW YORK	882	1,101	-19.9 %	51	58	-12.1 %	6.7	7.5	-10.4 %
NEWARK	385	437	-11.9 %	50	60	-16.7 %	3.3	3.6	-7.1 %
CAMDEN	296	366	-19.1 %	47	59	-20.3 %	3.2	3.1	2.0 %
ALBANY	217	251	-13.5 %	24	25	-4.0 %	3.7	4.0	-7.8 %
BUFFALO	119	134	-11.2 %	13	13	0.0 %	4.1	4.4	-6.5 %
Region Total	1,899	2,289	-17.0 %	92	113	-18.6 %	8.2	8.4	-2.2 %
Northwest/Alaska									
SEATTLE	351	427	-17.8 %	42	40	5.0 %	3.5	4.2	-15.9 %
PORTLAND	279	313	-10.9 %	40	38	5.3 %	3.3	3.5	-4.7 %
BOISE	118	115	2.6 %	25	22	13.6 %	2.3	2.1	11.6 %
SPOKANE	68	69	-1.4 %	22	25	-12.0 %	1.7	1.6	5.5 %
ANCHORAGE	21	24	-12.5 %	5	7	-28.6 %	2.5	1.7	48.8 %
Region Total	837	948	-11.7 %	66	64	3.1 %	5.4	5.8	-7.6 %
Pacific/Hawaii									
LOS ANGELES	991	905	9.5 %	68	57	19.3 %	6.4	6.4	-1.2 %

Market	YTD Volume 2014	YTD Volume 2013	Chg %	Active Lenders 2014	Active Lenders 2013	Chg %	Volume / Lender 2014	Volume / Lender 2013	Chg %
SANTA ANA	753	705	6.8 %	61	55	10.9 %	5.9	5.2	12.7 %
SAN FRANCISCO	683	560	22.0 %	56	37	51.4 %	5.7	6.0	-6.0 %
PHOENIX	480	375	28.0 %	35	31	12.9 %	5.4	4.6	17.7 %
SAN DIEGO	395	330	19.7 %	49	37	32.4 %	4.2	4.0	3.1 %
SACRAMENTO	384	293	31.1 %	47	36	30.6 %	3.9	4.2	-6.8 %
LAS VEGAS	145	87	66.7 %	21	16	31.3 %	3.2	2.0	56.4 %
FRESNO	135	121	11.6 %	33	27	22.2 %	2.2	2.4	-6.4 %
HONOLULU	87	75	16.0 %	13	14	-7.1 %	2.3	2.5	-9.6 %
TUCSON	83	93	-10.8 %	16	20	-20.0 %	2.8	2.0	39.6 %
RENO	53	46	15.2 %	15	9	66.7 %	1.9	2.1	-9.1 %
Region Total	4,189	3,590	16.7 %	130	114	14.0 %	12.8	12.1	5.8 %
Rocky Mountain									
DENVER	393	436	-9.9 %	40	35	14.3 %	4.3	5.4	-20.5 %
SALT LAKE CITY	348	433	-19.6 %	32	28	14.3 %	4.5	5.4	-17.8 %
HELENA	90	90	0.0 %	12	13	-7.7 %	3.0	2.7	12.8 %
CASPER	35	45	-22.2 %	13	13	0.0 %	1.7	1.6	5.1 %
SIOUX FALLS	20	20	0.0 %	5	7	-28.6 %	1.6	1.7	-3.7 %
FARGO	14	10	40.0 %	4	3	33.3 %	1.6	1.5	4.2 %
Region Total	900	1,034	-13.0 %	61	55	10.9 %	6.2	7.1	-12.0 %
Southeast/Caribbean									
MIAMI	567	543	4.4 %	64	58	10.3 %	4.3	4.0	7.5 %
GREENSBORO	492	702	-29.9 %	27	32	-15.6 %	6.6	7.5	-12.1 %
ATLANTA	350	433	-19.2 %	34	34	0.0 %	5.0	5.4	-6.7 %
TAMPA	317	344	-7.8 %	43	41	4.9 %	3.4	4.3	-18.9 %
COLUMBIA	299	395	-24.3 %	31	34	-8.8 %	3.8	4.3	-10.9 %
BIRMINGHAM	241	381	-36.7 %	21	29	-27.6 %	5.1	5.4	-5.0 %
ORLANDO	220	211	4.3 %	40	35	14.3 %	2.8	3.0	-5.1 %
CARIBBEAN	208	436	-52.3 %	17	18	-5.6 %	6.1	8.4	-28.2 %
JACKSONVILLE	208	310	-32.9 %	32	37	-13.5 %	3.3	3.6	-6.5 %
KNOXVILLE	201	274	-26.6 %	25	30	-16.7 %	3.7	3.8	-1.6 %
JACKSON	154	200	-23.0 %	15	18	-16.7 %	4.5	3.8	20.7 %
LOUISVILLE	149	186	-19.9 %	19	22	-13.6 %	3.9	3.9	-0.8 %
NASHVILLE	147	207	-29.0 %	20	26	-23.1 %	3.4	4.0	-13.5 %
MEMPHIS	62	93	-33.3 %	11	17	-35.3 %	2.8	2.3	22.5 %
Region Total	3,615	4,715	-23.3 %	128	138	-7.2 %	11.2	13.0	-13.6 %
Southwest									
HOUSTON	337	424	-20.5 %	36	46	-21.7 %	4.0	4.0	0.7 %
DALLAS	331	380	-12.9 %	41	42	-2.4 %	3.3	3.7	-10.1 %
SAN ANTONIO	311	428	-27.3 %	46	45	2.2 %	3.5	3.8	-6.6 %
FT. WORTH	276	334	-17.4 %	35	45	-22.2 %	3.8	3.2	20.0 %
NEW ORLEANS	239	263	-9.1 %	25	26	-3.8 %	4.1	3.7	12.8 %
LITTLE ROCK	145	234	-38.0 %	16	25	-36.0 %	3.9	3.7	5.4 %
ALBUQUERQUE	131	147	-10.9 %	25	23	8.7 %	2.4	2.3	4.5 %
OKLAHOMA CITY	109	131	-16.8 %	15	20	-25.0 %	3.1	2.7	17.0 %
LUBBOCK	108	158	-31.6 %	27	25	8.0 %	2.1	2.6	-19.3 %
TULSA	103	102	1.0 %	15	18	-16.7 %	3.0	2.1	38.8 %
SHREVEPORT	67	84	-20.2 %	17	18	-5.6 %	2.0	2.2	-8.8 %
Region Total	2,157	2,685	-19.7 %	84	94	-10.6 %	9.8	10.5	-6.5 %
Grand Total	19,015	21,632	-12.1 %	394	444	-11.3 %	18.1	18.2	-0.6 %

Analyze your top competitors and leverage the competitive strategies that work for them. Call us for a free, no obligation, Competitive Landscape Report at (682) 651-5632.

Top 100 Lenders - Year to Date

Rank	Lender	Vol 2014	Vol 2013	Chg %	Mkt Share 2014	Mkt Share 2013	Chg %	Top State
1	AMERICAN ADVISORS GROUP	3471	1885	84 %	18.3 %	8.7 %	109 %	CA
2	LIBERTY HOME EQUITY SOLU	2344	2923	-20 %	12.3 %	13.5 %	-9 %	CA
3	RMS/Security One Lending	2093	2937	-29 %	11.0 %	13.6 %	-19 %	CA
4	ONE REVERSE MORTGAGE LLC	1642	1864	-12 %	8.6 %	8.6 %	0 %	TX
5	URBAN FINANCIAL OF AMERI	1324	1269	4 %	7.0 %	5.9 %	19 %	CA
6	GENERATION MORTGAGE COMP	721	931	-23 %	3.8 %	4.3 %	-12 %	NY
7	PROFICIO MORTGAGE VENTUR	679	818	-17 %	3.6 %	3.8 %	-6 %	CA
8	ASSOCIATED MORTGAGE BANK	286	309	-7 %	1.5 %	1.4 %	5 %	CA
9	NET EQUITY FINANCIAL INC	174	154	13 %	0.9 %	0.7 %	29 %	PA
10	SUN WEST MORTGAGE CO INC	174	325	-46 %	0.9 %	1.5 %	-39 %	CA
11	CHERRY CREEK MORTGAGE CO	156	308	-49 %	0.8 %	1.4 %	-42 %	UT
12	MAVERICK FUNDING CORP	149	336	-56 %	0.8 %	1.6 %	-50 %	NJ
13	UNITED NORTHERN MORTGAGE	147	108	36 %	0.8 %	0.5 %	55 %	NY
14	PLAZA HOME MORTGAGE INC	147	103	43 %	0.8 %	0.5 %	62 %	CA
15	LIVE WELL FINANCIAL INC	146	21	595 %	0.8 %	0.1 %	691 %	CA
16	HIGH TECH LENDING INC	144	174	-17 %	0.8 %	0.8 %	-6 %	CA
17	M & T BANK	139	254	-45 %	0.7 %	1.2 %	-38 %	NY
18	OPEN MORTGAGE LLC	136	96	42 %	0.7 %	0.4 %	61 %	CA
19	GMFS LLC	128	212	-40 %	0.7 %	1.0 %	-31 %	CA
20	TOWNEBANK	116	130	-11 %	0.6 %	0.6 %	2 %	VA
21	NATIONWIDE EQUITIES CORP	114	179	-36 %	0.6 %	0.8 %	-28 %	NY
22	FIRSTBANK	114	127	-10 %	0.6 %	0.6 %	2 %	TN
23	MONEY HOUSE INC	108	159	-32 %	0.6 %	0.7 %	-23 %	ZZ
24	REVERSE MORTGAGE USA INC	107	543	-80 %	0.6 %	2.5 %	-78 %	TX
25	ADVISORS MORTGAGE GROUP	101	56	80 %	0.5 %	0.3 %	105 %	NY
26	AMERICAN PACIFIC MORTGAG	84	63	33 %	0.4 %	0.3 %	52 %	CA
27	MCM HOLDINGS INC	81	51	59 %	0.4 %	0.2 %	81 %	FL
28	NATIONSTAR MORTGAGE LLC	80	217	-63 %	0.4 %	1.0 %	-58 %	CA
29	NORTH AMERICAN SAVINGS B	79	43	84 %	0.4 %	0.2 %	109 %	TX
30	FIRSTAR BANK NA	77	110	-30 %	0.4 %	0.5 %	-20 %	OK
31	MORTGAGESHOP LLC	73	85	-14 %	0.4 %	0.4 %	-2 %	VA
32	MORTGAGE SERVICES III LL	68	65	5 %	0.4 %	0.3 %	19 %	IL
33	SOUTHERN TRUST MORTGAGE	66	54	22 %	0.3 %	0.2 %	39 %	VA
34	TOP FLITE FINANCIAL INC	64	87	-26 %	0.3 %	0.4 %	-16 %	WI
35	PEOPLES BANK	56	59	-5 %	0.3 %	0.3 %	8 %	CA
36	UNITED SOUTHWEST MORTGAG	56	78	-28 %	0.3 %	0.4 %	-18 %	CA
37	ATLANTIC BAY MORTGAGE GR	51	105	-51 %	0.3 %	0.5 %	-45 %	VA
38	LEADER ONE FINANCIAL COR	47	72	-35 %	0.2 %	0.3 %	-26 %	KS
39	ASPIRE FINANCIAL INC	44	85	-48 %	0.2 %	0.4 %	-41 %	TX
40	EASTERN BANK	43	38	13 %	0.2 %	0.2 %	29 %	MA
41	SUN AMERICAN MORTGAGE CO	43	62	-31 %	0.2 %	0.3 %	-21 %	AZ
42	SUCCESS MORTGAGE PARTNER	42	46	-9 %	0.2 %	0.2 %	4 %	MI
43	MAS ASSOCIATES LLC	41	65	-37 %	0.2 %	0.3 %	-28 %	MD
44	MANN MORTGAGE LLC	41	34	21 %	0.2 %	0.2 %	37 %	MT
45	MCS MORTGAGE BANKERS INC	41	3	1,267 %	0.2 %	0.0 %	1,455 %	NY
46	CS FINANCIAL INC	40	13	208 %	0.2 %	0.1 %	250 %	CA
47	DOLLAR BANK FSB	39	48	-19 %	0.2 %	0.2 %	-8 %	PA
48	GATEWAY FUNDING DIVERSIF	39	54	-28 %	0.2 %	0.2 %	-18 %	PA
49	EVOLVE BANK & TRUST	38	25	52 %	0.2 %	0.1 %	73 %	NY
50	FULTON BANK NA	37	41	-10 %	0.2 %	0.2 %	3 %	PA

Rank	Lender	Vol 2014	Vol 2013	Chg %	Mkt Share 2014	Mkt Share 2013	Chg %	Top State
51	SENIOR MORTGAGE BANKERS	37	125	-70 %	0.2 %	0.6 %	-66 %	ZZ
52	CHRISTENSEN FINANCIAL IN	36	42	-14 %	0.2 %	0.2 %	-2 %	FL
53	BANK OF ENGLAND	36	26	38 %	0.2 %	0.1 %	58 %	CT
54	RESIDENTIAL HOME FUNDING	35	23	52 %	0.2 %	0.1 %	73 %	NJ
55	GATEWAY BANK MORTGAGE	34	10	240 %	0.2 %	0.0 %	287 %	NC
56	VANGUARD FUNDING LLC	34	42	-19 %	0.2 %	0.2 %	-8 %	NY
57	REVERSE MORTGAGE FUNDING	33	0		0.2 %	0.0 %		CA
58	AMERICAN NATIONWIDE MORT	33	63	-48 %	0.2 %	0.3 %	-40 %	TX
59	STERLING SAVINGS BANK	32	53	-40 %	0.2 %	0.2 %	-31 %	OR
60	HOMESTREET BANK	32	49	-35 %	0.2 %	0.2 %	-26 %	WA
61	SIMONICH CORPORATION	30	15	100 %	0.2 %	0.1 %	128 %	CA
62	VAN DYK MORTGAGE CORPORA	29	77	-62 %	0.2 %	0.4 %	-57 %	KY
63	HOMEOWNERS MORTGAGE ENTE	29	48	-40 %	0.2 %	0.2 %	-31 %	NC
64	FIRST PRIORITY FINANCIAL	29	26	12 %	0.2 %	0.1 %	27 %	WA
65	DAS ACQUISITION CO LLC	29	27	7 %	0.2 %	0.1 %	22 %	MO
66	BERKSHIRE BANK	28	14	100 %	0.1 %	0.1 %	128 %	MA
67	AMERICA FIRST FEDERAL CR	28	24	17 %	0.1 %	0.1 %	33 %	UT
68	UNIVERSAL LENDING CORPOR	27	61	-56 %	0.1 %	0.3 %	-50 %	CO
69	CITY FIRST MTG SERVICES	26	0		0.1 %	0.0 %		CA
70	CIRCLE MORTGAGE CORPORAT	26	26	0 %	0.1 %	0.1 %	14 %	FL
71	THE FEDERAL SAVINGS BANK	26	20	30 %	0.1 %	0.1 %	48 %	CA
72	LAND-HOME FINANCIAL SERV	25	9	178 %	0.1 %	0.0 %	216 %	CA
73	GEORGETOWN MORTGAGE	25	12	108 %	0.1 %	0.1 %	137 %	CO
74	INTEGRITY HOME LOAN OF C	24	21	14 %	0.1 %	0.1 %	30 %	FL
75	GUARANTEED RATE INC	24	27	-11 %	0.1 %	0.1 %	1 %	MN
76	GERSHMAN INVESTMENT CORP	24	20	20 %	0.1 %	0.1 %	37 %	MO
77	SECURITYNATIONAL MORTGAG	23	13	77 %	0.1 %	0.1 %	101 %	UT
78	SKYLINE FINANCIAL CORPOR	23	18	28 %	0.1 %	0.1 %	45 %	CA
79	DIRECTORS FINANCIAL GROU	22	23	-4 %	0.1 %	0.1 %	9 %	CA
80	VIP MORTGAGE INC	22	24	-8 %	0.1 %	0.1 %	4 %	AZ
81	FRANKLIN FIRST FINANCIAL	21	31	-32 %	0.1 %	0.1 %	-23 %	NY
82	MARKETPLACE HOME MORTGAG	21	13	62 %	0.1 %	0.1 %	84 %	MN
83	FAIRWAY INDEPENDENT MORT	21	12	75 %	0.1 %	0.1 %	99 %	PA
84	REAL ESTATE MORTGAGE NET	21	13	62 %	0.1 %	0.1 %	84 %	NJ
85	CONTOUR MORTGAGE CORPORA	21	61	-66 %	0.1 %	0.3 %	-61 %	NY
86	GREAT OAK LENDING	20	37	-46 %	0.1 %	0.2 %	-39 %	MD
87	CARROLLTON MORTGAGE CO	20	14	43 %	0.1 %	0.1 %	63 %	CA
88	AMERIPRO FUNDING INC	20	23	-13 %	0.1 %	0.1 %	-1 %	TX
89	SACRAMENTO FIRST MORTGAG	20	9	122 %	0.1 %	0.0 %	153 %	CA
90	PEOPLES HOME EQUITY INC	20	17	18 %	0.1 %	0.1 %	34 %	TN
91	PRIMARY RESIDENTIAL MORT	20	34	-41 %	0.1 %	0.2 %	-33 %	NM
92	BROKER SOLUTIONS INC	20	7	186 %	0.1 %	0.0 %	225 %	CA
93	VIG MORTGAGE CORP	20	44	-55 %	0.1 %	0.2 %	-48 %	ZZ
94	WEST TOWN SAVINGS BANK	19	16	19 %	0.1 %	0.1 %	35 %	FL
95	LENEX FINANCIAL MORTGAGE	19	4	375 %	0.1 %	0.0 %	440 %	CA
96	EQUITY LOANS LLC	19	3	533 %	0.1 %	0.0 %	620 %	NJ
97	CENTRAL PACIFIC BANK	18	6	200 %	0.1 %	0.0 %	241 %	HI
98	CITYWIDE HOME LOANS	18	13	38 %	0.1 %	0.1 %	58 %	UT
99	CROSSCOUNTRY MORTGAGE	18	10	80 %	0.1 %	0.0 %	105 %	TN
100	COBALT MORTGAGE INC	18	8	125 %	0.1 %	0.0 %	156 %	WA

Paid Advertisement

For Bulletproof Valuation & REO Services
Call on the LRES Team
 The leading provider for the HECM industry
714.872.5813
www.LRES.com

Lres
 Real Estate Solutions. We hear you.

Paid Advertisement

THINGS AREN'T ALWAYS THE WAY THEY APPEAR
 Don't be fooled by imposters. Stick with the company with over 15 years of title and settlement experience in the reverse mortgage industry.
 Toll-Free: 800.542.4113 | www.PRClosings.com
FIRST IN REVERSE

PRC
 PREMIER REVERSE CLOSINGS
Member of Reverse Mortgage Solutions

completeness, legality of the information. Reverse Market Insight, Inc. does not endorse any products or services advertised on this report. We also waive any liability of any loss or damage that may be incurred as a result of the use of such advertised products or services.

HECM Lenders (Retail & TPO)

Copyright 2014 © - Reverse Market Insight, Inc. All Rights Reserved.

visit us at: www.rm insight.net