

HECM Originators (FHA & Non-FHA)

Industry Summary

HECMs endorsed through April 2014

Next Release Date: Week 4 of July

Retail
Endorsement Growth

0.2 %

Wholesale
Endorsement Growth

-19.9 %

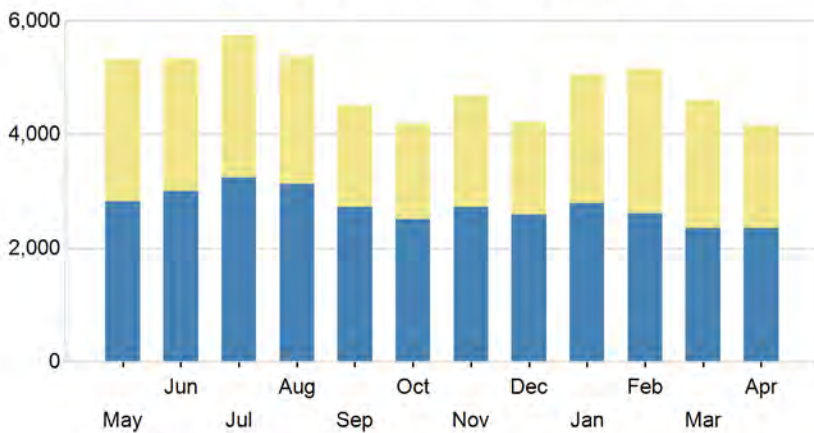
Total
Endorsement Growth

-9.7 %

Figures above reflect change from prior month


PERFORMANCE

Trailing Twelve Month Endorsements




	Retail		Wholesale		Total	
	Units	Chg %	Units	Chg %	Units	Chg %
May	2,823	-10.2 %	2,498	-2.7 %	5,321	-6.9 %
Jun	3,002	6.3 %	2,335	-6.5 %	5,337	0.3 %
Jul	3,232	7.7 %	2,511	7.5 %	5,743	7.6 %
Aug	3,125	-3.3 %	2,248	-10.5 %	5,373	-6.4 %
Sep	2,735	-12.5 %	1,782	-20.7 %	4,517	-15.9 %
Oct	2,510	-8.2 %	1,676	-5.9 %	4,186	-7.3 %
Nov	2,734	8.9 %	1,951	16.4 %	4,685	11.9 %
Dec	2,594	-5.1 %	1,629	-16.5 %	4,223	-9.9 %
Jan	2,789	7.5 %	2,265	39.0 %	5,054	19.7 %
Feb	2,614	-6.3 %	2,545	12.4 %	5,159	2.1 %
Mar	2,358	-9.8 %	2,256	-11.4 %	4,614	-10.6 %
Apr	2,362	0.2 %	1,806	-19.9 %	4,168	-9.7 %
Total	32,878		25,502		58,380	

*Paid Advertisement



REVERSEVISION'S ONLINE REVERSE MORTGAGE TRAINING



- ✓ Earn CRMP CE Credits
- ✓ Earn NMLS CE Credits
- ✓ Internet-Based and Self-Paced
- ✓ Cost and Time Effective
- ✓ Consistent Training Across Staff
- ✓ SAFE Act Compliant, Prepare for Audits
- ✓ Learn More at www.ReverseVision.com/RVU

ENROLL
TODAY!



REVERSE MARKET INSIGHT

(682) 651-5632

info@rminight.net

www.rminight.net

Interested in industry commentary, data and analysis? [CLICK HERE](#)
 Subscribe to our [FREE ReverseIQ Newsletter](#) and [FREE Industry Reports](#)

Top 10 by Retail and Wholesale Volume														
Rank / Company	May	Jun	Jul	Aug	Sep	Oct	Nov	Dec	Jan	Feb	Mar	Apr	Total	Mkt Shr
AMERICAN ADVISORS GROUP	306	555	981	981	832	847	736	668	798	788	860	1,258	9,610	16.5%
LIBERTY HOME EQUITY SOLU	814	902	926	1,015	580	369	702	240	293	1,246	1,437	534	9,058	15.5%
URBAN FINANCIAL OF AMERI	1,020	847	803	607	609	635	573	421	716	695	739	534	8,199	14.0%
RMS/SECURITY ONE LENDING	696	621	682	682	683	510	647	797	1,145	826	291	314	7,894	13.5%
ONE REVERSE MORTGAGE LLC	478	459	429	465	452	407	475	376	470	357	406	409	5,183	8.9%
GENERATION MORTGAGE COMP	441	475	521	380	278	302	172	193	381	489	183	200	4,015	6.9%
PROFICIO MORTGAGE VENTUR	319	283	254	199	162	210	158	143	209	195	155	120	2,407	4.1%
SUN WEST MORTGAGE CO INC	227	134	158	100	85	110	120	115	115	50	44	63	1,321	2.3%
CHERRY CREEK MORTGAGE CO	167	120	112	95	70	21	154	179	86	90	76	93	1,263	2.2%
REVERSE MORTGAGE USA INC	123	238	127	107	127	100	101	138	110				1,171	2.0%
Total	4,591	4,634	4,993	4,631	3,878	3,511	3,838	3,270	4,323	4,736	4,191	3,525	50,121	85.9%

Top 10 Wholesale and Retail Performance Stats														
Company	Rankings			Current Volume			Growth %			Mix		Market Share		
	Ret	Whls	Total	Ret	Whls	Total	Ret	Whls	Total	Ret	Whls	Ret	Whls	Total
AMERICAN ADVISORS GROUP	1	5	1	7,670	1,940	9,610	68.2 %	529.9 %	97.5 %	80 %	20 %	13.1 %	7.6 %	16.5 %
LIBERTY HOME EQUITY SOLUT	4	2	2	3,490	5,568	9,058	0.5 %	7.2 %	4.5 %	39 %	61 %	6.0 %	21.8 %	15.5 %
URBAN FINANCIAL OF AMERIC	6	1	3	1,376	6,823	8,199	9.4 %	16.3 %	15.1 %	17 %	83 %	2.4 %	26.8 %	14.0 %
RMS/SECURITY ONE LENDING	3	3	4	4,267	3,627	7,894	6.3 %	32.9 %	17.1 %	54 %	46 %	7.3 %	14.2 %	13.5 %
ONE REVERSE MORTGAGE LLC	2		5	5,183	0	5,183	3.2 %	NaN	3.2 %	100 %	0 %	8.9 %		8.9 %
GENERATION MORTGAGE COMPA	9	4	6	780	3,235	4,015	-23.8 %	-31.0 %	-29.7 %	19 %	81 %	1.3 %	12.7 %	6.9 %
PROFICIO MORTGAGE VENTURE	5		7	2,407	0	2,407	91.2 %	NaN	91.2 %	100 %	0 %	4.1 %		4.1 %
SUN WEST MORTGAGE CO INC	33	6	8	205	1,116	1,321	-19.0 %	-8.7 %	-10.4 %	16 %	84 %	0.4 %	4.4 %	2.3 %
CHERRY CREEK MORTGAGE CO	11	7	9	627	636	1,263	-14.7 %	-3.6 %	-9.5 %	50 %	50 %	1.1 %	2.5 %	2.2 %
REVERSE MORTGAGE USA INC	7	16	10	1,111	60	1,171	-17.2 %	>1,000%	-12.7 %	95 %	5 %	1.9 %	0.2 %	2.0 %
Total				27,116	23,005	50,121	18.2 %	11.3 %	14.9 %	54 %	46 %	46.4 %	90.2 %	85.9 %

Top 5 Retail by Unit Growth														
Company	Rankings			Current Volume			Unit Growth			Mix		Market Share		
	Ret	Whls	Total	Ret	Whls	Total	Ret	Whls	Total	Ret	Whls	Ret	Whls	Total
AMERICAN ADVISORS GROUP	1	5	1	7,670	1,940	9,610	3,111	1,632	4,743	80 %	20 %	13.1 %	7.6 %	16.5 %
PROFICIO MORTGAGE VENTURE	5		7	2,407	0	2,407	1,148	0	1,148	100 %	0 %	4.1 %		4.1 %
OPEN MORTGAGE LLC	10		13	727	0	727	463	0	463	100 %	0 %	1.2 %		1.2 %
RMS/SECURITY ONE LENDING	3	3	4	4,267	3,627	7,894	252	898	1,150	54 %	46 %	7.3 %	14.2 %	13.5 %
HIGH TECH LENDING INC	16	19	17	499	50	549	168	33	201	91 %	9 %	0.9 %	0.2 %	0.9 %
Total				15,570	5,617	21,187	5,142	2,563	7,705	73 %	27 %	26.7 %	22.0 %	36.3 %

Top 5 Wholesale by Unit Growth														
Company	Rankings			Current Volume			Unit Growth			Mix		Market Share		
	Ret	Whls	Total	Ret	Whls	Total	Ret	Whls	Total	Ret	Whls	Ret	Whls	Total
AMERICAN ADVISORS GROUP	1	5	1	7,670	1,940	9,610	3,111	1,632	4,743	80 %	20 %	13.1 %	7.6 %	16.5 %
URBAN FINANCIAL OF AMERIC	6	1	3	1,376	6,823	8,199	118	957	1,075	17 %	83 %	2.4 %	26.8 %	14.0 %
RMS/SECURITY ONE LENDING	3	3	4	4,267	3,627	7,894	252	898	1,150	54 %	46 %	7.3 %	14.2 %	13.5 %
LIBERTY HOME EQUITY SOLUT	4	2	2	3,490	5,568	9,058	19	374	393	39 %	61 %	6.0 %	21.8 %	15.5 %
NATIONWIDE EQUITIES CORPO	31	9	15	208	413	621	-69	235	166	33 %	67 %	0.4 %	1.6 %	1.1 %
Total				17,011	18,371	35,382	3,431	4,096	7,527	48 %	52 %	29.1 %	72.0 %	60.6 %

Top 10 Wholesale	Active Brokers	% Capture
URBAN FINANCIAL OF AMERICA LLC	314	50 %
LIBERTY HOME EQUITY SOLUTIONS INC	734	40 %
RMS/SECURITY ONE LENDING	264	31 %
GENERATION MORTGAGE COMPANY	354	23 %
AMERICAN ADVISORS GROUP	159	26 %
SUN WEST MORTGAGE CO INC	304	19 %
CHERRY CREEK MORTGAGE CO INC	69	53 %
MONEY HOUSE INC	15	76 %
NATIONWIDE EQUITIES CORPORATION	69	9 %
PLAZA HOME MORTGAGE INC	263	41 %

Paid Advertisement

Living Forward in Reverse

- Wholesale Lending
- Correspondent Lending

RMS
Reverse Mortgage Solutions, Inc.

Top 100 Ranking HECM Volume by Channel - Endorsements Last 12 Months through April 2014

Rank			Loans			Market Share			Rank			Loans			Market Share				
R	W	T	Company	R	W	Total	Ret	Whls	Total	R	W	T	Company	R	W	T	Ret	Whls	Total
1	5	1	AMERICAN ADVISORS GR	7,670	1,940	9,610	13.1%	7.6%	16.5%	47			MAS ASSOCIATES LLC	133	0	133	0.2%	0.0%	0.2%
4	2	2	LIBERTY HOME EQUITY	3,490	5,568	9,058	6.0%	21.8%	15.5%	49			NORTH AMERICAN SAVIN	132	0	132	0.2%	0.0%	0.2%
6	1	3	URBAN FINANCIAL OF A	1,376	6,823	8,199	2.4%	26.8%	14.0%	50			VAN DYK MORTGAGE COR	129	0	129	0.2%	0.0%	0.2%
3	3	4	RMS/SECURITY ONE LEN	4,267	3,627	7,894	7.3%	14.2%	13.5%	50			PRIMARY RESIDENTIAL	129	0	129	0.2%	0.0%	0.2%
2		5	ONE REVERSE MORTGAGE	5,183	0	5,183	8.9%	0.0%	8.9%	52			FIRST AMERICAN HOME	126	0	126	0.2%	0.0%	0.2%
9	4	6	GENERATION MORTGAGE	780	3,235	4,015	1.3%	12.7%	6.9%	53			VANGUARD FUNDING LLC	121	0	121	0.2%	0.0%	0.2%
5		7	PROFICIO MORTGAGE VE	2,407	0	2,407	4.1%	0.0%	4.1%	53			HOMESTREET BANK	121	0	121	0.2%	0.0%	0.2%
33	6	8	SUN WEST MORTGAGE CO	205	1,116	1,321	0.4%	4.4%	2.3%	53			SENIOR FUNDING ASSOC	121	0	121	0.2%	0.0%	0.2%
11	7	9	CHERRY CREEK MORTGAG	627	636	1,263	1.1%	2.5%	2.2%	56			CONTINENTAL HOME LOA	120	0	120	0.2%	0.0%	0.2%
7	16	10	REVERSE MORTGAGE USA	1,111	60	1,171	1.9%	0.2%	2.0%	57			AEGEAN FINANCIAL INC	119	0	119	0.2%	0.0%	0.2%
8	13	11	ASSOCIATED MORTGAGE	837	230	1,067	1.4%	0.9%	1.8%	58			STERLING SAVINGS BAN	118	0	118	0.2%	0.0%	0.2%
19	8	12	MONEY HOUSE INC	473	432	905	0.8%	1.7%	1.6%	58			CHRISTENSEN FINANCIA	118	0	118	0.2%	0.0%	0.2%
10		13	OPEN MORTGAGE LLC	727	0	727	1.2%	0.0%	1.2%	60			ALL FINANCIAL SERVIC	117	0	117	0.2%	0.0%	0.2%
18	14	14	MAVERICK FUNDING COR	483	147	630	0.8%	0.6%	1.1%	61			DOLLAR BANK FSB	116	0	116	0.2%	0.0%	0.2%
31	9	15	NATIONWIDE EQUITIES	208	413	621	0.4%	1.6%	1.1%	62			PERRI FUNDING CORP	115	0	115	0.2%	0.0%	0.2%
12		16	IREVERSE HOME LOANS	593	0	593	1.0%	0.0%	1.0%	63			INTEGRITY 1ST MORTGA	114	0	114	0.2%	0.0%	0.2%
16	19	17	HIGH TECH LENDING IN	499	50	549	0.9%	0.2%	0.9%	64			MFS/TA INC DBA FUTUR	111	0	111	0.2%	0.0%	0.2%
13	29	18	NATIONSTAR MORTGAGE	540	0	540	0.9%	0.0%	0.9%	65			BANK OF ENGLAND	110	0	110	0.2%	0.0%	0.2%
17	20	19	GMFS LLC	486	26	512	0.8%	0.1%	0.9%	66			FULTON BANK NA	108	0	108	0.2%	0.0%	0.2%
14		20	NET EQUITY FINANCIAL	508	0	508	0.9%	0.0%	0.9%	153	17		JAMES B NUTTER AND C	48	59	107	0.1%	0.2%	0.2%
15		21	M & T BANK	501	0	501	0.9%	0.0%	0.9%	67			PRIORITY FINANCIAL S	104	0	104	0.2%	0.0%	0.2%
1011	10	22	PLAZA HOME MORTGAGE	2	399	401	0.0%	1.6%	0.7%	68			MANN MORTGAGE LLC	103	0	103	0.2%	0.0%	0.2%
22	15	23	UNITED NORTHERN MORT	322	65	387	0.6%	0.3%	0.7%	68			EVOLVE BANK & TRUST	103	0	103	0.2%	0.0%	0.2%
20		24	NEW DAY FINANCIAL LL	373	0	373	0.6%	0.0%	0.6%	68			SIMONICH CORPORATION	103	0	103	0.2%	0.0%	0.2%
237	11	25	LIVE WELL FINANCIAL	31	337	368	0.1%	1.3%	0.6%	71			PINNACLE CAPITAL MOR	102	0	102	0.2%	0.0%	0.2%
21	26	26	FIRSTBANK	327	1	328	0.6%	0.0%	0.6%	77	25		HOMEOWNERS MORTGAGE	95	3	98	0.2%	0.0%	0.2%
22		27	TOWNEBANK	322	0	322	0.6%	0.0%	0.6%	72			AXIA FINANCIAL LLC	97	0	97	0.2%	0.0%	0.2%
24		28	FIRSTAR BANK NA	320	0	320	0.5%	0.0%	0.5%	72			GATEWAY FUNDING DIVE	97	0	97	0.2%	0.0%	0.2%
25		29	SENIOR MORTGAGE BANK	280	0	280	0.5%	0.0%	0.5%	72			OCEANFIRST BANK	97	0	97	0.2%	0.0%	0.2%
26		30	EMERY FEDERAL CREDIT	270	0	270	0.5%	0.0%	0.5%	72			SENTRIX FINANCIAL SE	97	0	97	0.2%	0.0%	0.2%
248	12	31	MCM HOLDINGS INC	28	238	266	0.0%	0.9%	0.5%	72			NOVA FINANCIAL & INV	97	0	97	0.2%	0.0%	0.2%
27		32	AMERICAN PACIFIC MOR	253	0	253	0.4%	0.0%	0.4%	78			ROYAL UNITED MORTGAG	91	0	91	0.2%	0.0%	0.2%
28		33	PEOPLES BANK	244	0	244	0.4%	0.0%	0.4%	78			OMNI-FUND INC	91	0	91	0.2%	0.0%	0.2%
29		34	UNITED SOUTHWEST MOR	221	0	221	0.4%	0.0%	0.4%	78			LEGACY HOME FINANCIN	91	0	91	0.2%	0.0%	0.2%
30		35	ADVISORS MORTGAGE GR	220	0	220	0.4%	0.0%	0.4%	81			RESIDENTIAL HOME FUN	90	0	90	0.2%	0.0%	0.2%
31		36	TRINITY REVERSE MORT	208	0	208	0.4%	0.0%	0.4%	82			DIRECT FINANCE CORPO	89	0	89	0.2%	0.0%	0.2%
34		37	TOP FLITE FINANCIAL	192	0	192	0.3%	0.0%	0.3%	83			URBAN HOUSING MORTGA	88	0	88	0.2%	0.0%	0.2%
35		38	ASPIRE FINANCIAL INC	191	0	191	0.3%	0.0%	0.3%	84			DAS ACQUISITION CO L	87	0	87	0.1%	0.0%	0.1%
36		39	AMERICAN NATIONWIDE	183	0	183	0.3%	0.0%	0.3%	85			CONTOUR MORTGAGE COR	86	0	86	0.1%	0.0%	0.1%
37		40	MORTGAGESHOP LLC	174	0	174	0.3%	0.0%	0.3%	85			MONTGOMERY MORTGAGE	86	0	86	0.1%	0.0%	0.1%
38		41	SUN AMERICAN MORTGAG	173	0	173	0.3%	0.0%	0.3%	87			EAST COAST CAPITAL C	83	0	83	0.1%	0.0%	0.1%
39		42	MORTGAGE SERVICES II	168	0	168	0.3%	0.0%	0.3%	88			AMERICA FIRST FEDERA	82	0	82	0.1%	0.0%	0.1%
40		43	NEW CASTLE MORTGAGE	153	0	153	0.3%	0.0%	0.3%	88			CS FINANCIAL INC	82	0	82	0.1%	0.0%	0.1%
41		44	SOUTHERN TRUST MORTG	150	0	150	0.3%	0.0%	0.3%	90			GREAT OAK LENDING	81	0	81	0.1%	0.0%	0.1%
42		45	ATLANTIC BAY MORTGAG	149	0	149	0.3%	0.0%	0.3%	96	26		FRANKLIN FIRST FINAN	80	1	81	0.1%	0.0%	0.1%
43		46	VIG MORTGAGE CORP	142	0	142	0.2%	0.0%	0.2%	90			MCGOWIN-KING MORTGAG	81	0	81	0.1%	0.0%	0.1%
44		47	UNIVERSAL LENDING CO	140	0	140	0.2%	0.0%	0.2%	90			GUARANTEED RATE INC	81	0	81	0.1%	0.0%	0.1%
45		48	APPROVAL FIRST HOME	137	0	137	0.2%	0.0%	0.2%	90			FIRST PRIORITY FINAN	81	0	81	0.1%	0.0%	0.1%
46		49	LEADER ONE FINANCIAL	136	0	136	0.2%	0.0%	0.2%	90			SUCCESS MORTGAGE PAR	81	0	81	0.1%	0.0%	0.1%
47		50	ARAMCO MORTGAGE INC	133	0	133	0.2%	0.0%	0.2%	90			REVERSE MORTGAGE ANS	81	0	81	0.1%	0.0%	0.1%

About Reverse Market Insight, Inc.
Reverse Market Insight (RMI) is the premier provider of market intelligence and strategic advisory solutions in the reverse mortgage marketplace.

RMI is proud to serve 8 of the top 10 reverse mortgage lenders as clients and is the exclusive strategic partner of the National Reverse Mortgage Lenders Association (NRMLA) for market intelligence.

25910 Acero | Suite 140 | Mission Viejo, CA 92691
(682) 651-5632
<http://www.rminight.net>

CLIENT FOCUS	INTEGRITY	TEAMWORK	INNOVATION
RESPECT FOR EACH INDIVIDUAL		RESPONSIBLE CITIZENSHIP	




A Knight Capital Group, Inc. Company

These six principles are what made us THE leader in reverse mortgage lending. Ready to get on the right path? **CLICK NOW** to get started or visit our wholesale website at www.reverseit.com.

*According to RMI measuring number of endorsed wholesale units January - December 2011

Disclaimer: Although a significant effort is made to assure the accuracy and completeness of the information provided, Reverse Market Insight, Inc. makes no express or implied warranty as to the accuracy, adequacy, completeness, legality of the information. Reverse Market Insight, Inc. does not endorse any products or services advertised on this report. We also waive any liability of any loss or damage that may be incurred as a result of the use of such advertised products or services.

Top 100 HECM Originators - April 2014 Rankings (Single Month)

Rank		Company	Loans			Growth		Rank		Company	Loans			Growth	
M	Y		Mth	YTD	Avg	Mth	YTD	M	Y		Mth	YTD	Avg	Mth	YTD
1	1	AMERICAN ADVISORS GR	997	2,867	716.8	52.0 %	54.5 %	46	91	AAA SOUTHERN NEW ENG	10	27	6.8	400.0 %	285.7 %
2	2	ONE REVERSE MORTGAGE	409	1,642	410.5	0.7 %	-11.9 %	46	97	CITY FIRST MTG SERVI	10	26	6.5	-28.6 %	766.7 %
3	3	LIBERTY HOME EQUITY	190	1,369	342.3	-67.4 %	-22.1 %	46	119	DIRECTORS FINANCIAL	10	22	5.5	150.0 %	-4.3 %
4	5	PROFICIO MORTGAGE VE	120	679	169.8	-22.6 %	-17.4 %	46	119	JTS AND CO	10	22	5.5	900.0 %	4.8 %
5	6	URBAN FINANCIAL OF A	114	442	110.5	-10.2 %	-2.0 %	55	65	CHRISTENSEN FINANCIA	9	36	9.0	50.0 %	-14.3 %
6	4	RMS/SECURITY ONE LEN	112	1,311	327.8	-25.3 %	-31.6 %	55	69	STERLING SAVINGS BAN	9	34	8.5	-10.0 %	-41.4 %
7	10	NET EQUITY FINANCIAL	56	176	44.0	7.7 %	8.6 %	55	91	UNIVERSAL LENDING CO	9	27	6.8	80.0 %	-55.7 %
8	7	ASSOCIATED MORTGAGE	46	285	71.3	27.8 %	-7.8 %	55	97	HOMEOWNERS MORTGAGE	9	26	6.5	350.0 %	-45.8 %
9	9	IREVERSE HOME LOANS	40	196	49.0	8.1 %	-26.6 %	55	223	MORTGAGE CREDIT OF A	9	11	2.8	800.0 %	120.0 %
9	11	CHERRY CREEK MORTGAG	40	143	35.8	110.5 %	-46.0 %	60	31	MORTGAGE SERVICES II	8	68	17.0	-42.9 %	4.6 %
11	8	GENERATION MORTGAGE	38	255	63.8	-15.6 %	-7.6 %	60	41	LEADER ONE FINANCIAL	8	47	11.8	0.0 %	-34.7 %
12	17	FIRSTBANK	31	114	28.5	-22.5 %	-10.2 %	60	60	DOLLAR BANK FSB	8	38	9.5	-20.0 %	-20.8 %
13	24	TRINITY REVERSE MORT	30	88	22.0	42.9 %	57.1 %	60	65	BROOKSTONE MORTGAGE	8	36	9.0	60.0 %	1,700.0 %
14	12	M & T BANK	29	139	34.8	11.5 %	-45.3 %	60	80	SUN WEST MORTGAGE CO	8	30	7.5	60.0 %	-72.2 %
15	18	FIRST AMERICAN HOME	28	109	27.3	-6.7 %	2,080.0 %	60	82	THE SENIOR EQUITY GR	8	29	7.3	0.0 %	70.6 %
16	13	OPEN MORTGAGE LLC	27	136	34.0	12.5 %	41.7 %	60	97	CIRCLE MORTGAGE CORP	8	26	6.5	14.3 %	0.0 %
16	15	GMFS LLC	27	119	29.8	17.4 %	-41.1 %	60	103	GERSHMAN INVESTMENT	8	25	6.3	0.0 %	-19.4 %
16	19	MONEY HOUSE INC	27	107	26.8	35.0 %	-31.4 %	60	124	PEOPLES HOME EQUITY	8	21	5.3	14.3 %	16.7 %
16	22	UNITED NORTHERN MORT	27	97	24.3	92.9 %	-10.2 %	60	131	GREAT OAK LENDING	8	20	5.0	33.3 %	-45.9 %
20	16	TOWNEBANK	26	116	29.0	18.2 %	-10.8 %	70	43	PEERRI FUNDING CORP	7	44	11.0	-46.2 %	4.8 %
21	27	NORTH AMERICAN SAVIN	22	79	19.8	-31.3 %	83.7 %	70	49	NOVA FINANCIAL & INV	7	42	10.5	133.3 %	61.5 %
22	20	ADVISORS MORTGAGE GR	21	102	25.5	-46.2 %	82.1 %	70	51	MCS MORTGAGE BANKERS	7	41	10.3	-65.0 %	1,266.7 %
23	14	HIGH TECH LENDING IN	19	128	32.0	26.7 %	-22.9 %	70	58	ALL FINANCIAL SERVIC	7	39	9.8	-30.0 %	-22.0 %
24	29	FIRSTAR BANK NA	18	77	19.3	-5.3 %	-30.0 %	70	68	RESIDENTIAL HOME FUN	7	35	8.8	-53.3 %	52.2 %
24	79	LIVE WELL FINANCIAL	18	31	7.8	157.1 %		70	69	GATEWAY BANK MORTGAG	7	34	8.5	-36.4 %	240.0 %
26	36	UNITED SOUTHWEST MOR	17	56	14.0	183.3 %	-54.1 %	70	69	SIMONICH CORPORATION	7	34	8.5	-22.2 %	126.7 %
26	38	AMERICAN NATIONWIDE	17	53	13.3	-10.5 %	-29.3 %	70	76	OMNI-FUND INC	7	32	8.0	40.0 %	3.2 %
28	21	EMERY FEDERAL CREDIT	16	101	25.3	-38.5 %	27.8 %	70	97	THE FEDERAL SAVINGS	7	26	6.5	-22.2 %	30.0 %
28	25	AMERICAN PACIFIC MOR	16	87	21.8	77.8 %	27.9 %	70	97	AMERICAN FIDELITY FI	7	26	6.5	40.0 %	44.4 %
30	45	AEGEAN FINANCIAL INC	15	43	10.8	87.5 %	72.0 %	70	131	MONTGOMERY MORTGAGE	7	20	5.0	16.7 %	-44.4 %
31	30	MORTGAGESHOP LLC	14	73	18.3	-17.6 %	-14.1 %	70	140	WEST TOWN SAVINGS BA	7	19	4.8	250.0 %	18.8 %
31	49	MFS/TA INC DBA FUTUR	14	42	10.5	-22.2 %		70	162	LONGBRIDGE LLC	7	16	4.0	250.0 %	1,500.0 %
31	154	MLD MORTGAGE	14	17	4.3	1,300.0 %		70	162	HOMESTEAD FUNDING CO	7	16	4.0	250.0 %	-20.0 %
34	27	NATIONSTAR MORTGAGE	13	79	19.8	160.0 %	-63.6 %	84	25	MAVERICK FUNDING COR	6	87	21.8	-81.8 %	-72.8 %
34	33	NATIONWIDE EQUITIES	13	64	16.0	-27.8 %	-46.2 %	84	40	ARAMCO MORTGAGE INC	6	50	12.5	-57.1 %	61.3 %
34	154	WILLIAMS FINANCIAL S	13	17	4.3	1,200.0 %		84	43	ASPIRE FINANCIAL INC	6	44	11.0	-50.0 %	-48.2 %
37	33	TOP FLITE FINANCIAL	12	64	16.0	-50.0 %	-26.4 %	84	45	EASTERN BANK	6	43	10.8	-71.4 %	19.4 %
37	42	APPROVAL FIRST HOME	12	45	11.3	-7.7 %	50.0 %	84	51	MANN MORTGAGE LLC	6	41	10.3	-53.8 %	17.1 %
37	103	NEW CENTURY REALTY &	12	25	6.3	200.0 %		84	51	BANK OF ENGLAND	6	41	10.3	-45.5 %	32.3 %
40	32	SOUTHERN TRUST MORTG	11	66	16.5	-31.3 %	17.9 %	84	51	MAS ASSOCIATES LLC	6	41	10.3	-25.0 %	-36.9 %
40	36	PEOPLES BANK	11	56	14.0	120.0 %	-6.7 %	84	55	CS FINANCIAL INC	6	40	10.0	-62.5 %	207.7 %
40	45	SUN AMERICAN MORTGAG	11	43	10.8	-15.4 %	-30.6 %	84	55	PRIMARY RESIDENTIAL	6	40	10.0	20.0 %	2.6 %
40	45	NEW CASTLE MORTGAGE	11	43	10.8	37.5 %	-18.9 %	84	69	MCGOWIN-KING MORTGAG	6	34	8.5	-25.0 %	25.9 %
40	103	GEORGETOWN MORTGAGE	11	25	6.3	83.3 %	108.3 %	84	69	VANGUARD FUNDING LLC	6	34	8.5	50.0 %	-19.0 %
40	119	REPUBLIC MORTGAGE HO	11	22	5.5	450.0 %	340.0 %	84	76	HOMESTREET BANK	6	32	8.0	20.0 %	-34.7 %
46	35	SENIOR FUNDING ASSOC	10	61	15.3	42.9 %	110.3 %	84	76	REVERSE MORTGAGE DIR	6	32	8.0	50.0 %	166.7 %
46	39	ATLANTIC BAY MORTGAG	10	51	12.8	11.1 %	-51.4 %	84	82	VAN DYK MORTGAGE COR	6	29	7.3	-33.3 %	-62.3 %
46	60	INTEGRITY 1ST MORTGA	10	38	9.5	-23.1 %	-24.0 %	84	85	THE PRIVATE BANK & T	6	28	7.0	-50.0 %	21.7 %
46	63	FULTON BANK NA	10	37	9.3	-23.1 %	-11.9 %	84	91	URBAN HOUSING MORTGA	6	27	6.8	50.0 %	
46	63	SENIOR MORTGAGE BANK	10	37	9.3	66.7 %	-70.4 %	84	115	SECURITYNATIONAL MOR	6	23	5.8	0.0 %	15.0 %

Column Definitions

M = Company ranking for current month endorsement volume
 Y = Company ranking for year to date endorsement volume
 Mth = Current month endorsement volume & growth from prior month
 YTD = Year to date endorsement volume & growth from prior year to date
 Avg = Average year to date monthly volume

*Year to date volume is tiebreaker for rankings shown

THINGS AREN'T ALWAYS THE WAY THEY APPEAR

Choose the title and settlement company with
the best closing track record in the industry.
With over 15 years of being the First in
Reverse, we know how to get the job done.



PRC
PREMIER REVERSE CLOSINGS
Division of Premier Closing Resources

Toll-Free: 800.542.4113 | www.PRClosings.com

FIRST IN REVERSE

Disclaimer: Although a significant effort is made to assure the accuracy and completeness of the information provided, Reverse Market Insight, Inc. makes no express or implied warranty as to the accuracy, adequacy, completeness, legality of the information. Reverse Market Insight, Inc. does not endorse any products or services advertised on this report. We also waive any liability of any loss or damage that may be incurred as a result of the use of such advertised products or services.