

# HECM Lenders (FHA Approved Only)

## Industry Overview

HECMs Endorsed through July 2016

Next Release Date: Week 1 of September

### Endorsement Growth Change

**-6.3 %**

### Competition Growth

**-5.6 %**

### Active Lender Change

**-12**

Figures above reflect change from prior month

## PERFORMANCE

Rank/Region	08/15	09/15	10/15	11/15	12/15	01/16	02/16	03/16	04/16	05/16	06/16	07/16	Trend
1 Pacific/Hawaii	2,090	1,427	1,045	911	1,135	1,090	1,321	1,292	1,118	1,045	1,079	995	▼
2 Southeast/Caribbean	932	902	864	897	898	758	841	899	822	757	780	695	▼
3 Southwest	473	410	456	539	483	420	567	460	501	402	459	394	▼
4 Midwest	440	401	355	332	351	326	363	411	339	280	295	262	▼
5 Mid-Atlantic	457	400	432	343	336	321	290	370	327	306	280	289	▲
6 New York/New Jersey	440	391	424	306	311	290	306	336	321	239	251	265	▲
7 Rocky Mountain	231	231	285	278	226	241	315	246	321	210	229	230	▲
8 Northwest/Alaska	395	243	182	174	230	190	279	275	223	211	222	201	▼
9 New England	194	175	190	128	164	163	182	157	158	125	100	128	▲
10 Great Plains	98	91	99	115	99	91	115	89	113	71	76	75	▼
<b>Total</b>	<b>5,750</b>	<b>4,671</b>	<b>4,332</b>	<b>4,023</b>	<b>4,233</b>	<b>3,890</b>	<b>4,579</b>	<b>4,535</b>	<b>4,243</b>	<b>3,646</b>	<b>3,771</b>	<b>3,534</b>	<b>▼</b>

Find out where the top five markets are in your area by state, county or even zip code to help improve sales performance, market share and maximize opportunities.

**Call us for a free briefing at (682) 651-5632.**



**REVERSE MARKET**  
INSIGHT

(682) 651-5632

info@rminsight.net

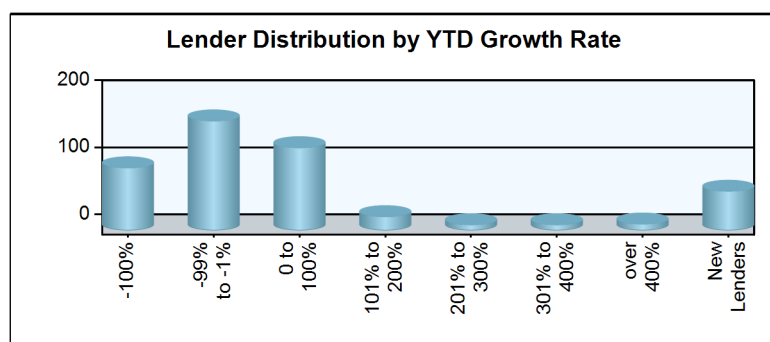
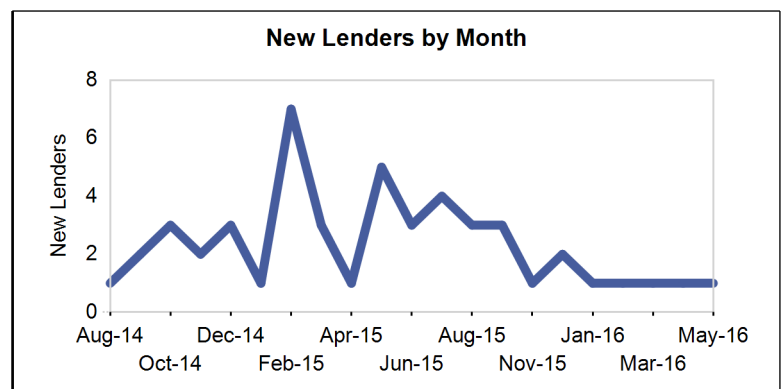
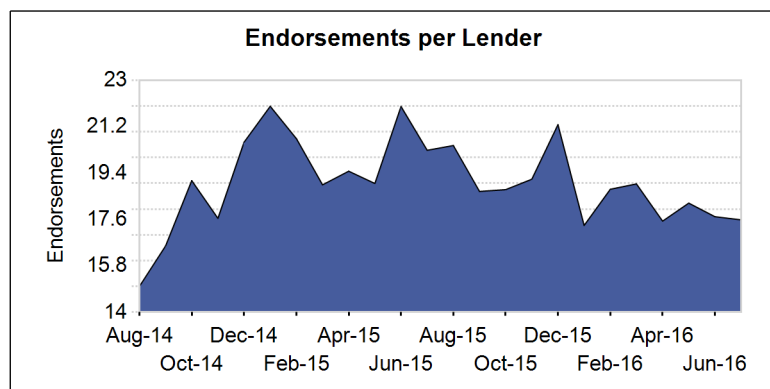
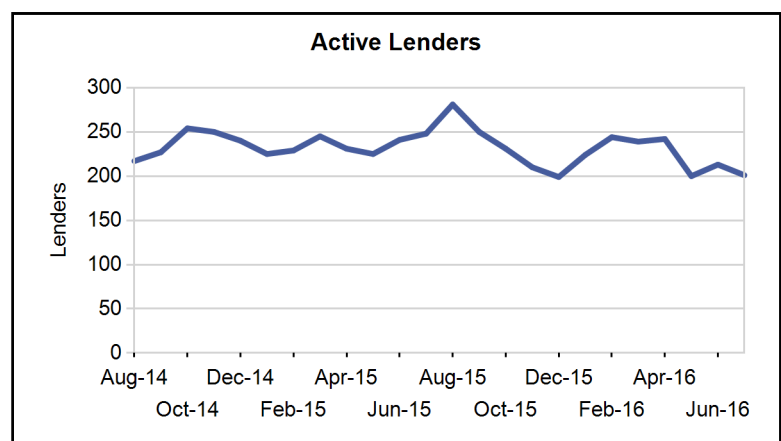
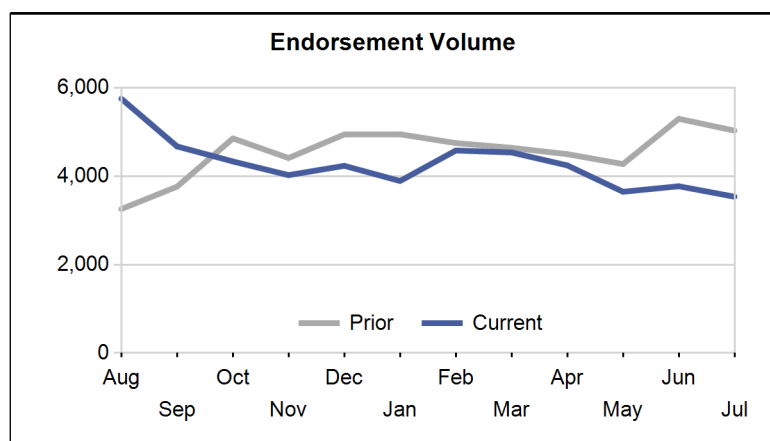
www.rminsight.net

Interested in industry commentary, data and analysis? [CLICK HERE](#)  
Subscribe to our [FREE ReverseIQ Newsletter](#) and [FREE Industry Reports](#)

# Competition

## Top 10 Lenders

Rank / Lender	08/15	09/15	10/15	11/15	12/15	01/16	02/16	03/16	04/16	05/16	06/16	07/16	Total	Trend
1 AMERICAN ADVISORS GROUP	1,220	1,239	1,092	1,022	1,028	826	917	999	966	796	924	873	11,902	▼
2 FINANCE OF AMERICA REVERSE LLC	495	315	322	302	326	323	368	286	270	330	278	298	3,913	▲
3 ONE REVERSE MORTGAGE LLC	393	353	317	358	351	287	330	322	316	316	283	271	3,897	▼
4 LIBERTY HOME EQUITY SOLUTIONS INC	570	401	340	143	78	291	490	338	446	225	272	161	3,755	▼
5 RMS/SECURITY ONE LENDING	474	265	282	320	413	356	406	351	162	67	71	87	3,254	▲
6 REVERSE MORTGAGE FUNDING LLC	236	175	197	192	207	163	190	227	262	275	190	264	2,578	▲
7 LIVE WELL FINANCIAL INC	208	131	132	203	172	150	130	270	184	164	134	105	1,983	▼
8 SYNERGY ONE LENDING INC	87	148	128	171	200	141	154	166	147	150	183	174	1,849	▼
9 HIGHTECHLENDING INC	100	86	74	58	60	55	96	114	90	104	159	80	1,076	▼
10 HOME POINT FINANCIAL CORPORATION	88	122	115	71	99	110	88	87	89	66	73	63	1,071	▼
<b>Top 10 SubTotal</b>	<b>3,871</b>	<b>3,235</b>	<b>2,999</b>	<b>2,840</b>	<b>2,934</b>	<b>2,702</b>	<b>3,169</b>	<b>3,160</b>	<b>2,932</b>	<b>2,493</b>	<b>2,567</b>	<b>2,376</b>	<b>35,278</b>	<b>▼</b>
<b>Industry Total</b>	<b>5,750</b>	<b>4,671</b>	<b>4,332</b>	<b>4,023</b>	<b>4,233</b>	<b>3,890</b>	<b>4,579</b>	<b>4,535</b>	<b>4,243</b>	<b>3,646</b>	<b>3,771</b>	<b>3,534</b>	<b>51,207</b>	<b>▼</b>



Paid Advertisement

Find **Opportunity** Faster

# Market Performance

Market	YTD Volume 2016	YTD Volume 2015	Chg %	Active Lenders 2016	Active Lenders 2015	Chg %	Volume / Lender 2016	Volume / Lender 2015	Chg %
<b>Great Plains</b>									
KANSAS CITY	172	209	-17.7 %	24	26	-7.7 %	2.4	2.8	-12.8 %
ST. LOUIS	144	170	-15.3 %	22	17	29.4 %	2.1	3.0	-28.8 %
DES MOINES	137	163	-16.0 %	17	17	0.0 %	2.6	3.4	-21.7 %
TOPEKA	93	119	-21.8 %	12	20	-40.0 %	2.5	2.1	20.2 %
OMAHA	84	116	-27.6 %	15	18	-16.7 %	1.6	2.4	-31.4 %
<b>Region Total</b>	<b>630</b>	<b>777</b>	<b>-18.9 %</b>	<b>41</b>	<b>40</b>	<b>2.5 %</b>	<b>4.2</b>	<b>5.3</b>	<b>-19.9 %</b>
<b>Mid-Atlantic</b>									
PHILADELPHIA	585	947	-38.2 %	53	51	3.9 %	3.6	5.1	-28.7 %
RICHMOND	482	821	-41.3 %	50	44	13.6 %	3.1	4.7	-35.3 %
WASH. D.C.	394	576	-31.6 %	38	44	-13.6 %	3.2	4.7	-30.6 %
BALTIMORE	325	535	-39.3 %	39	42	-7.1 %	2.8	3.8	-27.2 %
PITTSBURGH	195	292	-33.2 %	26	26	0.0 %	2.6	3.2	-20.5 %
CHARLESTON	105	134	-21.6 %	15	16	-6.3 %	2.3	3.6	-35.3 %
WILMINGTON	97	116	-16.4 %	23	24	-4.2 %	1.6	1.8	-11.6 %
<b>Region Total</b>	<b>2,183</b>	<b>3,421</b>	<b>-36.2 %</b>	<b>93</b>	<b>94</b>	<b>-1.1 %</b>	<b>6.8</b>	<b>9.3</b>	<b>-26.8 %</b>
<b>Midwest</b>									
CHICAGO	533	724	-26.4 %	39	50	-22.0 %	4.1	4.6	-11.3 %
INDIANAPOLIS	316	415	-23.9 %	26	29	-10.3 %	3.2	4.3	-25.4 %
MINN. ST. PAUL	267	283	-5.7 %	28	29	-3.4 %	2.9	3.1	-9.3 %
MILWAUKEE	216	307	-29.6 %	30	34	-11.8 %	2.5	3.3	-22.0 %
CLEVELAND	202	318	-36.5 %	28	28	0.0 %	2.5	4.1	-38.4 %
DETROIT	184	227	-18.9 %	22	20	10.0 %	2.8	3.0	-4.6 %
COLUMBUS	162	220	-26.4 %	26	27	-3.7 %	2.7	2.9	-5.5 %
GRAND RAPIDS	158	246	-35.8 %	19	18	5.6 %	2.5	3.7	-31.9 %
SPRINGFIELD	96	154	-37.7 %	14	20	-30.0 %	2.3	2.9	-19.7 %
CINCINNATI	94	114	-17.5 %	18	14	28.6 %	1.9	2.4	-24.4 %
FLINT	48	67	-28.4 %	10	14	-28.6 %	1.8	1.8	2.7 %
<b>Region Total</b>	<b>2,276</b>	<b>3,075</b>	<b>-26.0 %</b>	<b>85</b>	<b>97</b>	<b>-12.4 %</b>	<b>7.7</b>	<b>9.0</b>	<b>-14.6 %</b>
<b>New England</b>									
BOSTON	443	537	-17.5 %	31	35	-11.4 %	4.5	4.7	-6.1 %
HARTFORD	253	374	-32.4 %	31	36	-13.9 %	2.6	3.5	-25.7 %
BANGOR	132	135	-2.2 %	20	18	11.1 %	2.2	2.6	-16.3 %
MANCHESTER	95	137	-30.7 %	20	18	11.1 %	2.0	2.2	-9.3 %
PROVIDENCE	53	82	-35.4 %	12	17	-29.4 %	1.9	1.8	7.6 %
BURLINGTON	37	67	-44.8 %	9	10	-10.0 %	1.6	2.8	-43.3 %
<b>Region Total</b>	<b>1,013</b>	<b>1,332</b>	<b>-23.9 %</b>	<b>61</b>	<b>60</b>	<b>1.7 %</b>	<b>5.3</b>	<b>6.3</b>	<b>-16.4 %</b>
<b>New York/New Jersey</b>									
NEW YORK	969	1,483	-34.7 %	56	61	-8.2 %	4.7	6.4	-26.2 %
NEWARK	429	639	-32.9 %	55	59	-6.8 %	2.6	3.7	-28.1 %
CAMDEN	305	479	-36.3 %	48	50	-4.0 %	2.5	3.2	-21.3 %
ALBANY	190	354	-46.3 %	25	32	-21.9 %	2.4	3.1	-22.9 %
BUFFALO	115	201	-42.8 %	11	20	-45.0 %	3.0	3.3	-9.0 %
<b>Region Total</b>	<b>2,008</b>	<b>3,156</b>	<b>-36.4 %</b>	<b>96</b>	<b>104</b>	<b>-7.7 %</b>	<b>5.7</b>	<b>8.2</b>	<b>-29.9 %</b>
<b>Northwest/Alaska</b>									
SEATTLE	708	585	21.0 %	53	55	-3.6 %	3.6	3.3	9.7 %
PORTLAND	571	451	26.6 %	58	46	26.1 %	2.9	3.0	-2.5 %
BOISE	210	192	9.4 %	34	23	47.8 %	2.2	2.5	-14.2 %
SPOKANE	88	121	-27.3 %	21	25	-16.0 %	1.6	1.8	-12.0 %
ANCHORAGE	24	32	-25.0 %	5	7	-28.6 %	1.7	1.9	-6.4 %
<b>Region Total</b>	<b>1,601</b>	<b>1,381</b>	<b>15.9 %</b>	<b>80</b>	<b>75</b>	<b>6.7 %</b>	<b>5.0</b>	<b>5.2</b>	<b>-3.1 %</b>
<b>Pacific/Hawaii</b>									
LOS ANGELES	1,792	1,871	-4.2 %	92	86	7.0 %	6.1	7.0	-12.3 %

Market	YTD Volume 2016	YTD Volume 2015	Chg %	Active Lenders 2016	Active Lenders 2015	Chg %	Volume / Lender 2016	Volume / Lender 2015	Chg %
SANTA ANA	1,467	1,510	-2.8 %	86	74	16.2 %	5.4	6.4	-15.5 %
SAN FRANCISCO	1,310	1,315	-0.4 %	63	61	3.3 %	6.0	6.2	-3.5 %
PHOENIX	944	857	10.2 %	55	52	5.8 %	4.5	5.1	-11.3 %
SACRAMENTO	778	611	27.3 %	52	48	8.3 %	4.2	3.6	17.0 %
SAN DIEGO	638	597	6.9 %	55	58	-5.2 %	3.8	3.9	-2.0 %
FRESNO	335	300	11.7 %	34	38	-10.5 %	2.9	2.5	15.4 %
LAS VEGAS	270	323	-16.4 %	39	28	39.3 %	3.0	4.2	-28.4 %
RENO	164	118	39.0 %	21	18	16.7 %	2.4	2.2	6.6 %
TUCSON	133	163	-18.4 %	22	17	29.4 %	2.2	2.8	-21.6 %
HONOLULU	109	107	1.9 %	17	18	-5.6 %	1.9	1.8	6.9 %
<b>Region Total</b>	<b>7,940</b>	<b>7,772</b>	<b>2.2 %</b>	<b>159</b>	<b>153</b>	<b>3.9 %</b>	<b>13.2</b>	<b>14.5</b>	<b>-8.6 %</b>
<b>Rocky Mountain</b>									
DENVER	1,038	827	25.5 %	58	58	0.0 %	4.9	4.5	6.7 %
SALT LAKE CITY	507	579	-12.4 %	33	36	-8.3 %	3.9	4.2	-7.0 %
HELENA	132	144	-8.3 %	17	16	6.3 %	2.3	2.9	-20.2 %
CASPER	51	56	-8.9 %	14	13	7.7 %	1.7	1.5	13.9 %
FARGO	34	27	25.9 %	9	7	28.6 %	1.8	1.4	22.3 %
SIOUX FALLS	30	35	-14.3 %	9	7	28.6 %	1.2	1.6	-22.3 %
<b>Region Total</b>	<b>1,792</b>	<b>1,668</b>	<b>7.4 %</b>	<b>78</b>	<b>84</b>	<b>-7.1 %</b>	<b>5.8</b>	<b>6.0</b>	<b>-3.3 %</b>
<b>Southeast/Caribbean</b>									
MIAMI	978	1,215	-19.5 %	71	79	-10.1 %	4.5	4.9	-8.7 %
GREENSBORO	702	842	-16.6 %	49	37	32.4 %	4.2	6.3	-34.0 %
ATLANTA	577	730	-21.0 %	45	34	32.4 %	3.8	6.1	-37.3 %
TAMPA	536	714	-24.9 %	50	53	-5.7 %	3.6	4.7	-23.6 %
COLUMBIA	479	589	-18.7 %	41	30	36.7 %	3.2	4.3	-25.8 %
ORLANDO	476	546	-12.8 %	45	52	-13.5 %	3.4	3.5	-2.1 %
JACKSONVILLE	381	472	-19.3 %	35	38	-7.9 %	3.5	4.0	-11.6 %
BIRMINGHAM	348	458	-24.0 %	27	27	0.0 %	3.5	4.6	-24.3 %
KNOXVILLE	270	355	-23.9 %	24	29	-17.2 %	3.1	3.7	-15.3 %
CARIBBEAN	205	272	-24.6 %	18	18	0.0 %	3.4	4.7	-28.5 %
NASHVILLE	187	222	-15.8 %	27	25	8.0 %	2.4	3.1	-22.4 %
LOUISVILLE	180	252	-28.6 %	20	19	5.3 %	2.9	3.6	-19.0 %
JACKSON	160	226	-29.2 %	16	11	45.5 %	2.7	4.4	-38.4 %
MEMPHIS	73	105	-30.5 %	12	17	-29.4 %	2.1	2.4	-10.8 %
<b>Region Total</b>	<b>5,552</b>	<b>6,998</b>	<b>-20.7 %</b>	<b>129</b>	<b>156</b>	<b>-17.3 %</b>	<b>11.2</b>	<b>13.2</b>	<b>-15.5 %</b>
<b>Southwest</b>									
HOUSTON	626	712	-12.1 %	50	53	-5.7 %	3.9	4.6	-15.0 %
SAN ANTONIO	521	607	-14.2 %	39	44	-11.4 %	3.7	4.0	-7.8 %
DALLAS	447	499	-10.4 %	43	40	7.5 %	3.1	3.7	-15.4 %
FT. WORTH	430	449	-4.2 %	39	41	-4.9 %	3.2	3.2	0.3 %
NEW ORLEANS	320	428	-25.2 %	26	29	-10.3 %	3.8	4.4	-13.1 %
LITTLE ROCK	186	208	-10.6 %	23	19	21.1 %	3.0	3.5	-13.2 %
ALBUQUERQUE	179	241	-25.7 %	18	29	-37.9 %	2.6	3.3	-18.7 %
OKLAHOMA CITY	147	194	-24.2 %	20	20	0.0 %	2.8	3.1	-9.5 %
TULSA	145	171	-15.2 %	20	16	25.0 %	2.3	3.3	-32.0 %
LUBBOCK	142	226	-37.2 %	25	29	-13.8 %	2.0	2.8	-27.4 %
SHREVEPORT	60	113	-46.9 %	14	13	7.7 %	1.7	2.3	-26.5 %
<b>Region Total</b>	<b>3,203</b>	<b>3,848</b>	<b>-16.8 %</b>	<b>82</b>	<b>97</b>	<b>-15.5 %</b>	<b>9.5</b>	<b>11.1</b>	<b>-14.0 %</b>
<b>Grand Total</b>	<b>28,198</b>	<b>33,428</b>	<b>-15.6 %</b>	<b>389</b>	<b>424</b>	<b>-8.3 %</b>	<b>18.0</b>	<b>20.3</b>	<b>-11.4 %</b>

Analyze your top competitors and leverage the competitive strategies that work for them. Call us for a free, no obligation, Competitive Landscape Report at (682) 651-5632.

# Top 100 Lenders - Year to Date

Rank	Lender	Vol 2016	Vol 2015	Chg %	Mkt Share 2016	Mkt Share 2015	Chg %	Top State
1	AMERICAN ADVISORS GROUP	6301	8051	-22%	22.3%	24.1%	-7%	CA
2	LIBERTY HOME EQUITY SOLU	2223	2343	-5%	7.9%	7.0%	12%	CA
3	FINANCE OF AMERICA REVER	2153	2528	-15%	7.6%	7.6%	1%	CA
4	ONE REVERSE MORTGAGE LLC	2125	3273	-35%	7.5%	9.8%	-23%	CA
5	REVERSE MORTGAGE FUNDING	1571	1373	14%	5.6%	4.1%	36%	CA
6	RMS/SECURITY ONE LENDING	1500	2798	-46%	5.3%	8.4%	-36%	CA
7	LIVE WELL FINANCIAL INC	1137	1124	1%	4.0%	3.4%	20%	CA
8	SYNERGY ONE LENDING INC	1115	94	1,086%	4.0%	0.3%	1,306%	CA
9	HIGHTECHLENDING INC	698	469	49%	2.5%	1.4%	76%	CA
10	NATIONWIDE EQUITIES CORP	636	250	154%	2.3%	0.7%	202%	NY
11	HOME POINT FINANCIAL COR	576	744	-23%	2.0%	2.2%	-8%	CA
12	OPEN MORTGAGE LLC	373	432	-14%	1.3%	1.3%	2%	CA
13	FIRSTBANK	335	276	21%	1.2%	0.8%	44%	FL
14	REVERSE MORTGAGESCOM INC	300	0		1.1%	0.0%		FL
15	UNITED NORTHERN MORTGAGE	261	481	-46%	0.9%	1.4%	-36%	NY
16	PLAZA HOME MORTGAGE INC	231	313	-26%	0.8%	0.9%	-13%	CA
17	THE FEDERAL SAVINGS BANK	229	215	7%	0.8%	0.6%	26%	CA
18	CHERRY CREEK MORTGAGE CO	227	339	-33%	0.8%	1.0%	-21%	UT
19	FAIRWAY INDEPENDENT MORT	219	54	306%	0.8%	0.2%	381%	WI
20	ADVISORS MORTGAGE GROUP	202	231	-13%	0.7%	0.7%	4%	CA
21	SUN WEST MORTGAGE CO INC	201	337	-40%	0.7%	1.0%	-29%	CA
22	RESOLUTE BANK	178	93	91%	0.6%	0.3%	127%	CA
23	LONGBRIDGE FINANCIAL LLC	173	30	477%	0.6%	0.1%	584%	TX
24	UNITED SOUTHWEST MORTGAG	165	186	-11%	0.6%	0.6%	5%	CA
25	PEOPLES BANK	161	113	42%	0.6%	0.3%	69%	CA
26	AMERICAN PACIFIC MORTGAG	154	129	19%	0.5%	0.4%	42%	CA
27	PROFICIO MORTGAGE VENTUR	140	790	-82%	0.5%	2.4%	-79%	CA
28	MCM HOLDINGS INC	139	180	-23%	0.5%	0.5%	-8%	FL
29	M & T BANK	134	217	-38%	0.5%	0.6%	-27%	NY
30	BANC OF CALIFORNIA NA	122	43	184%	0.4%	0.1%	236%	CA
31	SUN AMERICAN MORTGAGE CO	115	120	-4%	0.4%	0.4%	14%	AZ
32	MONEY HOUSE INC	109	143	-24%	0.4%	0.4%	-10%	ZZ
33	BANK OF ENGLAND	86	60	43%	0.3%	0.2%	70%	FL
34	TOWNEBANK	82	132	-38%	0.3%	0.4%	-26%	VA
35	VIP MORTGAGE INC	78	55	42%	0.3%	0.2%	68%	AZ
36	LAND-HOME FINANCIAL SERV	76	63	21%	0.3%	0.2%	43%	CA
37	AMERICAN NATIONWIDE MORT	73	111	-34%	0.3%	0.3%	-22%	VA
38	FRANKLIN FIRST FINANCIAL	64	67	-4%	0.2%	0.2%	13%	NY
39	UNIVERSAL LENDING CORPOR	60	86	-30%	0.2%	0.3%	-17%	CO
40	QUONTIC BANK FSB	60	11	445%	0.2%	0.0%	547%	NY
41	WHOLESALE CAPITAL CORP	59	25	136%	0.2%	0.1%	180%	CA
42	MANN MORTGAGE LLC	59	46	28%	0.2%	0.1%	52%	ID
43	GEORGETOWN MORTGAGE	55	85	-35%	0.2%	0.3%	-23%	TX
44	FIRSTAR BANK NA	54	86	-37%	0.2%	0.3%	-26%	OK
45	BROKER SOLUTIONS INC	50	66	-24%	0.2%	0.2%	-10%	CA
46	WILLOW BEND MORTGAGE CO	49	9	444%	0.2%	0.0%	545%	TX
47	SUCCESS MORTGAGE PARTNER	48	80	-40%	0.2%	0.2%	-29%	MI
48	COMMUNITY FIRST NATIONAL	48	0		0.2%	0.0%		AZ
49	VANGUARD FUNDING LLC	47	52	-10%	0.2%	0.2%	7%	NY
50	FIRST PRIORITY FINANCIAL	46	39	18%	0.2%	0.1%	40%	CA

Rank	Lender	Vol 2016	Vol 2015	Chg %	Mkt Share 2016	Mkt Share 2015	Chg %	Top State
51	EVOLVE BANK & TRUST	42	46	-9%	0.1%	0.1%	8%	NY
52	LENOX FINANCIAL MORTGAGE	42	50	-16%	0.1%	0.1%	0%	CA
53	HOMEOWNERS MORTGAGE ENTE	41	70	-41%	0.1%	0.2%	-31%	SC
54	NOVA FINANCIAL & INVESTM	41	2	1,950%	0.1%	0.0%	2,330%	AZ
55	ACADEMY MORTGAGE CORPORA	39	28	39%	0.1%	0.1%	65%	UT
56	PACIFIC RESIDENTIAL MORT	38	42	-10%	0.1%	0.1%	7%	OR
57	SOUTHERN TRUST MORTGAGE	38	71	-46%	0.1%	0.2%	-37%	DC
58	RESIDENTIAL HOME FUNDING	37	52	-29%	0.1%	0.2%	-16%	NY
59	HOMEBRIDGE FINANCIAL SER	37	26	42%	0.1%	0.1%	69%	NJ
60	GMFS LLC	37	195	-81%	0.1%	0.6%	-78%	LA
61	YADKIN VALLEY BANK AND T	36	39	-8%	0.1%	0.1%	9%	NC
62	TOTAL MEDIA MANAGEMENT L	36	8	350%	0.1%	0.0%	433%	AL
63	MORTGAGE BROKERS SERVICE	36	9	300%	0.1%	0.0%	374%	WA
64	GATEWAY BANK MORTGAGE	34	38	-11%	0.1%	0.1%	6%	NC
65	MORTGAGESHOP LLC	33	86	-62%	0.1%	0.3%	-55%	VA
66	VAN DYK MORTGAGE CORPORA	33	43	-23%	0.1%	0.1%	-9%	KY
67	THE MONEY STORE	31	228	-86%	0.1%	0.7%	-84%	NY
68	PEOPLES HOME EQUITY INC	31	34	-9%	0.1%	0.1%	8%	TN
69	AKT AMERICAN CAPITAL INC	30	20	50%	0.1%	0.1%	78%	CA
70	AMERICAS MORTGAGE RESOUR	30	13	131%	0.1%	0.0%	174%	LA
71	NEW AMERICAN MORTGAGE LL	30	26	15%	0.1%	0.1%	37%	SC
72	CITYWIDE HOME LOANS	29	18	61%	0.1%	0.1%	91%	UT
73	BANK OF NORTH CAROLINA	29	31	-6%	0.1%	0.1%	11%	NC
74	FULTON BANK NA	28	48	-42%	0.1%	0.1%	-31%	PA
75	US MORTGAGE CORPORATION	27	44	-39%	0.1%	0.1%	-27%	NY
76	GATEWAY FUNDING DIVERSIF	24	45	-47%	0.1%	0.1%	-37%	NJ
77	UNITED MORTGAGE CORP	24	30	-20%	0.1%	0.1%	-5%	NY
78	CARROLLTON MORTGAGE CO	23	13	77%	0.1%	0.0%	110%	CA
79	GUILD MORTGAGE COMPANY	23	2	1,050%	0.1%	0.0%	1,263%	CA
80	SENIOR MORTGAGE BANKERS	23	63	-63%	0.1%	0.2%	-57%	ZZ
81	UNIVERSAL AMERICAN MORTG	22	11	100%	0.1%	0.0%	137%	CA
82	SECURITYNATIONAL MORTGAG	22	32	-31%	0.1%	0.1%	-18%	UT
83	AMERICA FIRST FEDERAL CR	22	48	-54%	0.1%	0.1%	-46%	UT
84	MOUNTAIN AMERICA CREDIT	22	35	-37%	0.1%	0.1%	-25%	UT
85	SIMONICH CORPORATION	22	32	-31%	0.1%	0.1%	-18%	CA
86	CMG MORTGAGE INC	21	15	40%	0.1%	0.0%	66%	CA
87	ON Q FINANCIAL INC	21	21	0%	0.1%	0.1%	19%	AZ
88	JAMES B NUTTER AND COMPA	21	25	-16%	0.1%	0.1%	0%	KS
89	SUMMIT FUNDING INC	20	17	18%	0.1%	0.1%	39%	CA
90	BANNER BANK	20	35	-43%	0.1%	0.1%	-32%	WA
91	AMCAP MORTGAGE LTD	20	20	0%	0.1%	0.1%	19%	TX
92	SKYLINE FINANCIAL CORPOR	19	10	90%	0.1%	0.0%	125%	CA
93	ASPIRE FINANCIAL INC	19	41	-54%	0.1%	0.1%	-45%	TX
94	FBC MORTGAGE LLC	19	3	533%	0.1%	0.0%	651%	FL
95	BERKSHIRE BANK	19	28	-32%	0.1%	0.1%	-20%	MA
96	MILEND INC	18	13	38%	0.1%	0.0%	64%	GA
97	COLONIAL SAVINGS FA	18	25	-28%	0.1%	0.1%	-15%	TX
98	EASTERN BANK	18	34	-47%	0.1%	0.1%	-37%	MA
99	AMERICAN LIBERTY MORTGAG	17	17	0%	0.1%	0.1%	19%	CO
100	FLAHERTY FUNDING CORP	17	28	-39%	0.1%	0.1%	-28%	VA

## Paid Advertisement

## Paid Advertisement

**TARGET YOUR MARKETING**

**RMI Dashboard**

**Your Reverse Mortgage Lending Partner. Putting the pieces together... Together.**

**Expand Your Business. Satisfy Your Clients.**

Approved GNMA Issuer.  
Cherry Creek Mortgage Co., Inc. NMLS #3001 dba 1st Reverse Mortgage USA®.  
All Rights Reserved. 3609 S. Wadsworth Blvd., Suite 500 Lakewood, CO 80235.

If you are looking for a new investor relationship and additional liquidity in the secondary markets for all reverse mortgage products, please contact 1st Reverse Mortgage USA® at (877) 217-0166 or www.1strmusa.com